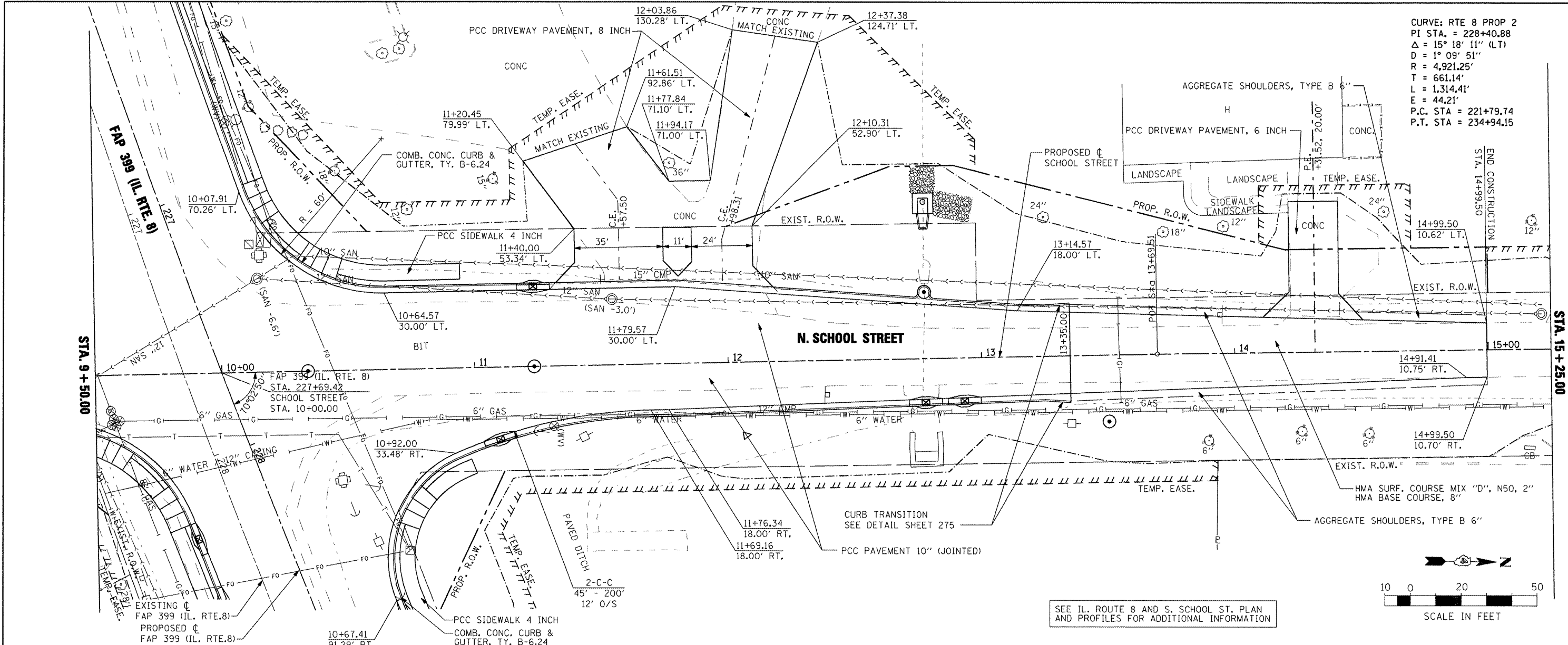
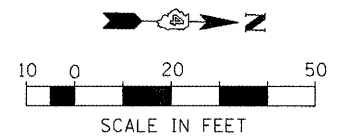


DATE	
BY	
PLAN	SURVEYED
	ALIGNED
	CHECKED
	RT. OF WAY
	CHECKED
	NO. FILE NAME

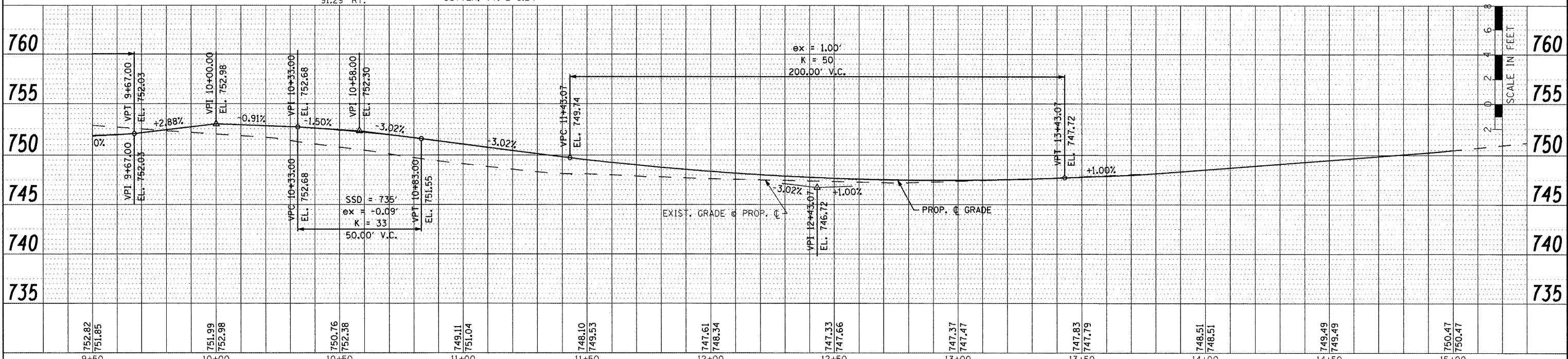
DATE	
BY	
PROFILE	SURVEYED
	GRADES
	CHECKED
	NO. NOTED
	STRUCTURE
	NOTATIONS
	CPROD



CURVE: RTE 8 PROP 2  
 PI STA. = 228+40.88  
 $\Delta = 15^\circ 18' 11''$  (LT)  
 $D = 1^\circ 09' 51''$   
 $R = 4,921.25'$   
 $T = 661.14'$   
 $L = 1,314.41'$   
 $E = 44.21'$   
 P.C. STA = 221+79.74  
 P.T. STA = 234+94.15



SEE IL. ROUTE 8 AND S. SCHOOL ST. PLAN AND PROFILES FOR ADDITIONAL INFORMATION



FILE NAME =	USER NAME = IDOT	DESIGNED -	REVISED -	<b>STATE OF ILLINOIS DEPARTMENT OF TRANSPORTATION</b>	<b>FAP 399 (IL RTE. 8) NORTH SCHOOL STREET - ROADWAY PLAN AND PROFILE</b>	F.A.P. RTE. =	SECTION	COUNTY	TOTAL SHEETS	SHEET NO.	
kt:\projects\200803566\dgn\04-Rte8-ht-PLN\PRF-N-School.dgn	PLOT SCALE = 40.00' / IN.	DRAWN -	REVISED -			399	36 R-7	TAZEWELL	390	67	
	PLOT 10+21-11/02/2011	CHECKED -	REVISED -			SCALE: AS SHOWN	SHEET NO. OF SHEETS	STA. 9+50.00 TO STA. 15+25.00	CONTRACT NO. 68370		
		DATE -	REVISED -			ILLINOIS FED. AID PROJECT					