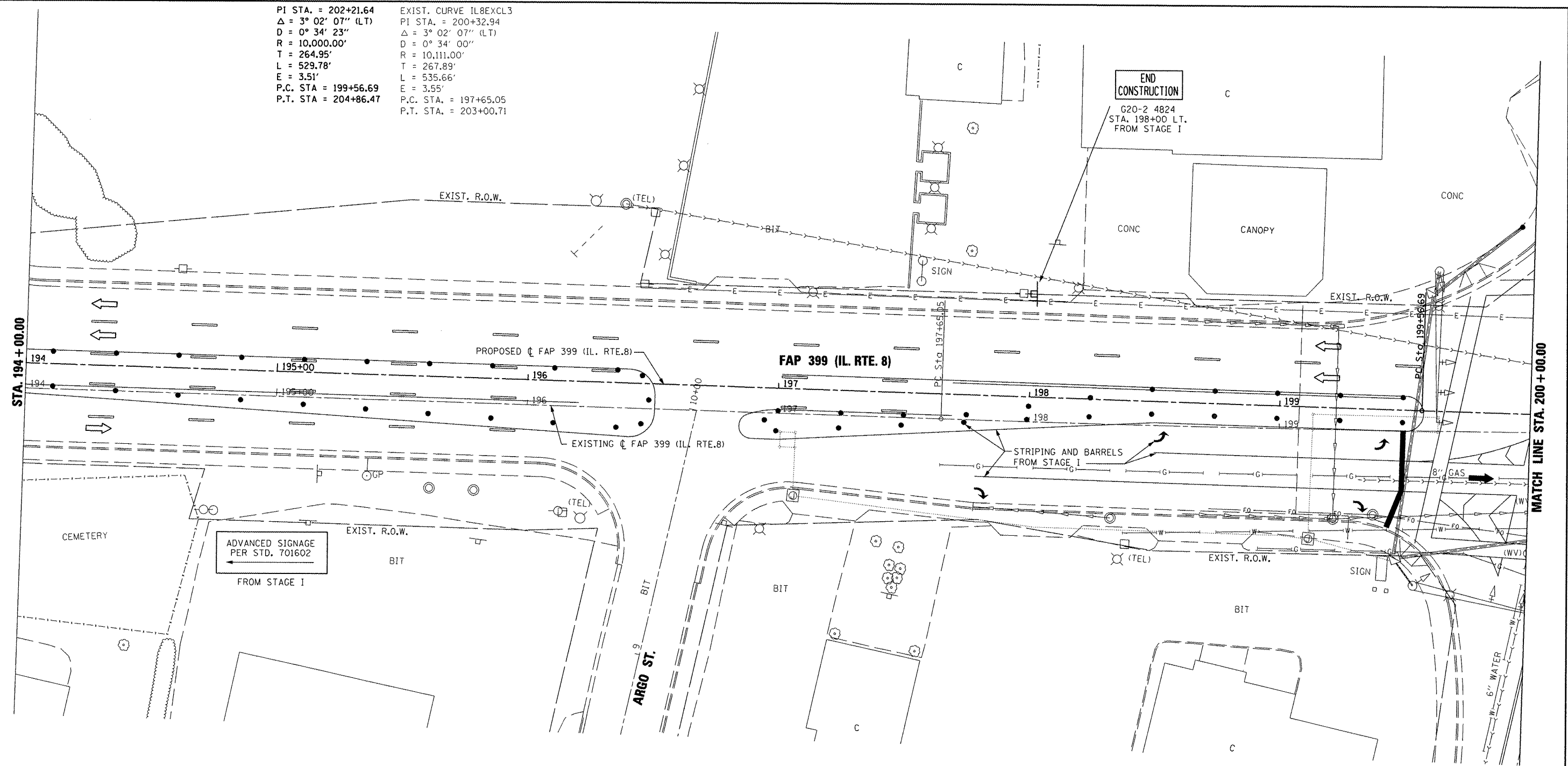


PI STA. = 202+21.64  
 $\Delta = 3^\circ 02' 07''$  (LT)  
 $D = 0^\circ 34' 23''$   
 $R = 10,000.00'$   
 $T = 264.95'$   
 $L = 529.78'$   
 $E = 3.51'$   
 P.C. STA. = 199+56.69  
 P.T. STA. = 204+86.47

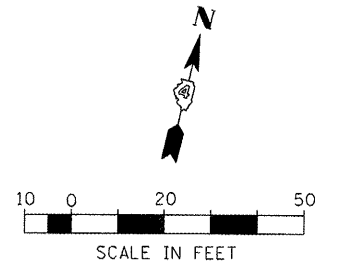
EXIST. CURVE IL8EXCL3  
 PI STA. = 200+32.94  
 $\Delta = 3^\circ 02' 07''$  (LT)  
 $D = 0^\circ 34' 00''$   
 $R = 10,111.00'$   
 $T = 267.89'$   
 $L = 535.66'$   
 $E = 3.55'$   
 P.C. STA. = 197+65.05  
 P.T. STA. = 203+00.71



NOTE: TEMPORARY CONCRETE BARRIER LOCATIONS ARE SHOWN AT  $\text{C}$  OF WALL.

**TEMPORARY PAVEMENT MARKING LEGEND**

(A) TEMP. PAVE. MARK. - 4" WHITE SOLID	(I) PAVE. MARK. TAPE - 4" WHITE SOLID			CONSTRUCTION THIS STAGE
(B) TEMP. PAVE. MARK. - 4" YELLOW SOLID	(J) PAVE. MARK. TAPE - 4" YELLOW SOLID			
(C) TEMP. PAVE. MARK. - DOUBLE 4" YELLOW SOLID	(K) PAVE. MARK. TAPE - DOUBLE 4" YELLOW SOLID			TEMPORARY PAVEMENT
(D) TEMP. PAVE. MARK. - 4" YELLOW SKIP DASH	(L) PAVE. MARK. TAPE - 4" YELLOW SKIP DASH			EXISTING TRAFFIC LANE
(E) TEMP. PAVE. MARK. - 8" WHITE SOLID	(M) PAVE. MARK. TAPE - 8" WHITE SOLID			TRAFFIC LANE
(F) TEMP. PAVE. MARK. - 8" WHITE SKIP DASH	(N) PAVE. MARK. TAPE - 8" WHITE SKIP DASH			TYPE II BARRICADES OR DRUMS @ 50' CTRS. UNLESS OTHERWISE NOTED
(G) TEMP. PAVE. MARK. - 24" WHITE SOLID (STOP BAR)	(O) PAVE. MARK. TAPE - 12" YELLOW SOLID (DIAGONAL)			TYPE III BARRICADE WITH R 11-2 SIGN
(H) TEMP. PAVE. MARK. - LETTERS AND SYMBOLS	(P) PAVE. MARK. TAPE - 12" WHITE SOLID (DIAGONAL)			TEMPORARY CONCRETE BARRIER
TEMP. PAVE. MARK. = PAINT	(Q) PAVE. MARK. TAPE - 24" WHITE SOLID (STOP BAR)			TEMPORARY IMPACT ATTENUATOR
	(R) PAVE. MARK. TAPE - LETTERS AND SYMBOLS			
	PAVE. MARK. TAPE = PAVEMENT MARKING TAPE, TYPE III			



FILE NAME =	USER NAME = IDOT	DESIGNED -	REVISED -
si:\projects\200803566\dgn\04-Rte8-sht-5	aging-2-A.dgn	DRAWN -	REVISED -
		CHECKED -	REVISED -
		DATE - 10-21-11	REVISED -

**STATE OF ILLINOIS  
DEPARTMENT OF TRANSPORTATION**

**FAP 399 (IL. RTE. 8)  
MAINTENANCE OF TRAFFIC - STAGE II**

SCALE: AS SHOWN SHEET NO. OF SHEETS STA. 194+00.00 TO STA. 200+00.00

F.A.P. RTE. 399	SECTION 36 R-7	COUNTY TAZEWELL	TOTAL SHEETS 390	SHEET NO. 123
CONTRACT NO. 68370			ILLINOIS FED. AID PROJECT	