

STRUCTURE #35
 STA. 254+00.00, 30.0' LT
 INLET, TYPE G-1
 RIM ELEV = 790.60
 INV ELEV = 786.51 (15" E)
 INV ELEV = 786.31 (15" W)

STRUCTURE #36
 STA. 256+00.00, 30.0' LT
 INLET, TYPE G-1
 RIM ELEV = 794.07
 INV ELEV = 790.31 (12" E)
 INV ELEV = 790.11 (15" W)

STRUCTURE #37
 STA. 258+00.00, 30.0' LT
 INLET, TYPE G-1
 RIM ELEV = 798.17
 INV ELEV = 794.90 (12" E)
 INV ELEV = 794.70 (12" W)

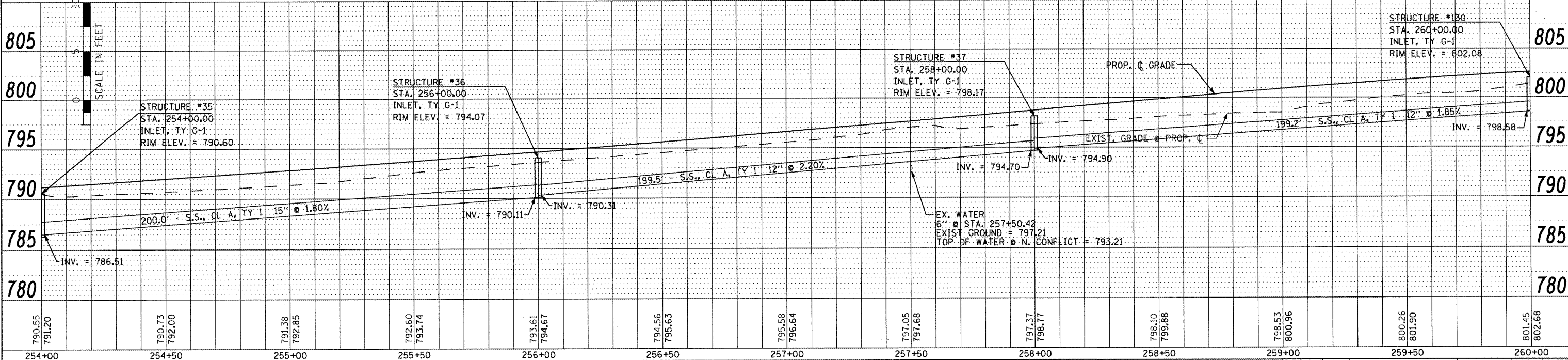
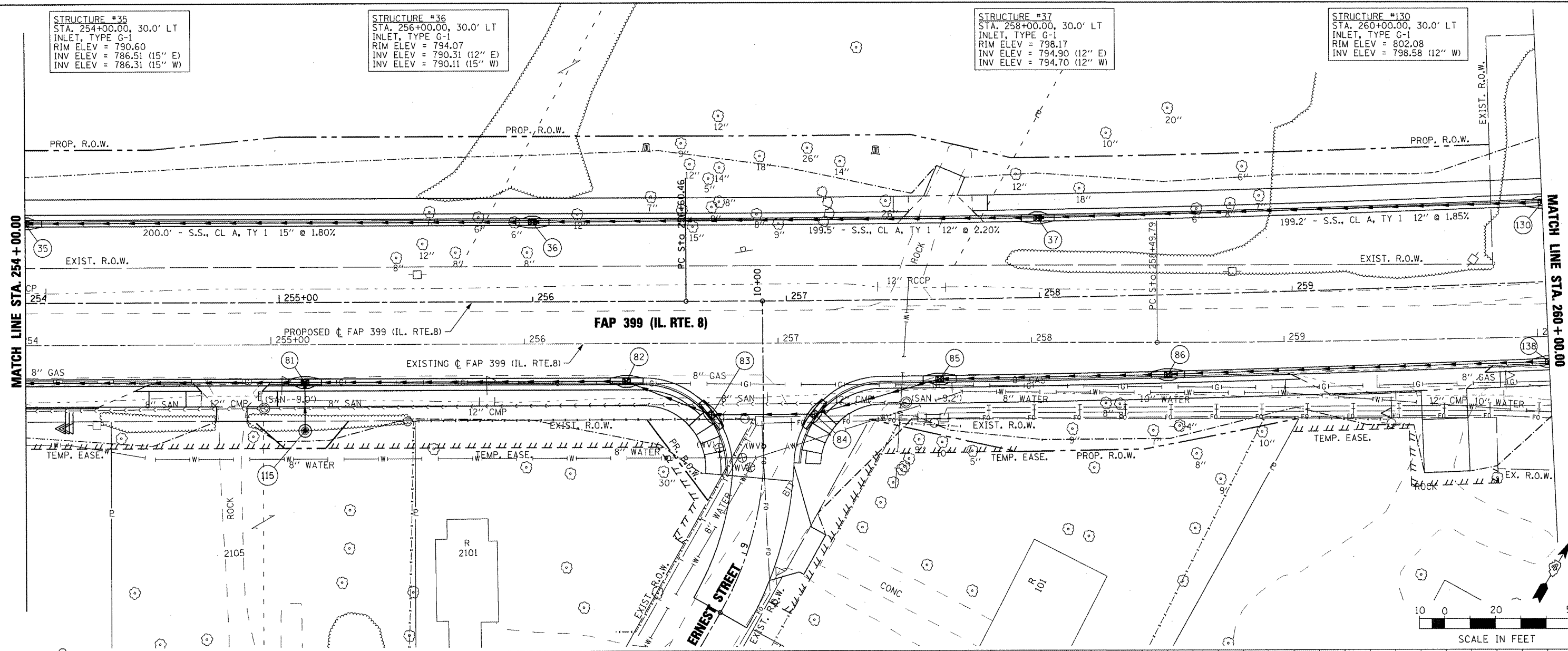
STRUCTURE #130
 STA. 260+00.00, 30.0' LT
 INLET, TYPE G-1
 RIM ELEV = 802.08
 INV ELEV = 798.58 (12" W)

DATE	
BY	
SURVEYED	
ALIGNED	
CHECKED	
RT. OF WAY CHECKED	
NOTE BOOK	
NO.	
CADD FILE NAME	

DATE	
BY	
PROFILE	
PLOTTED	
CHECKED	
BLK. NOTED	
STRUCTURE NOTATIONS CHKD	
NO.	

MATCH LINE STA. 254 + 00.00

MATCH LINE STA. 260 + 00.00



FILE NAME =	USER NAME = 100T	DESIGNED -	REVISED -	STATE OF ILLINOIS DEPARTMENT OF TRANSPORTATION				FAP 399 (IL RTE. 8) DRAINAGE PLAN AND PROFILE - NORTH				F.A. RTE.	SECTION	COUNTY	TOTAL SHEETS	SHEET NO.
:\projects\200803566\dgn\04-Rte8-sht-DRAIN-10_NORTH.dgn		DRAWN -	REVISED -									399	36 R-7	TAZEWELL	390	186
PLOT SCALE = 48.0000" / IN.		CHECKED -	REVISED -									CONTRACT NO. 68370				
PLOT DATE = 10/21/2011		DATE -	REVISED -									ILLINOIS FED. AID PROJECT				
254+00	254+50	255+00	255+50	256+00	256+50	257+00	257+50	258+00	258+50	259+00	259+50	260+00				