

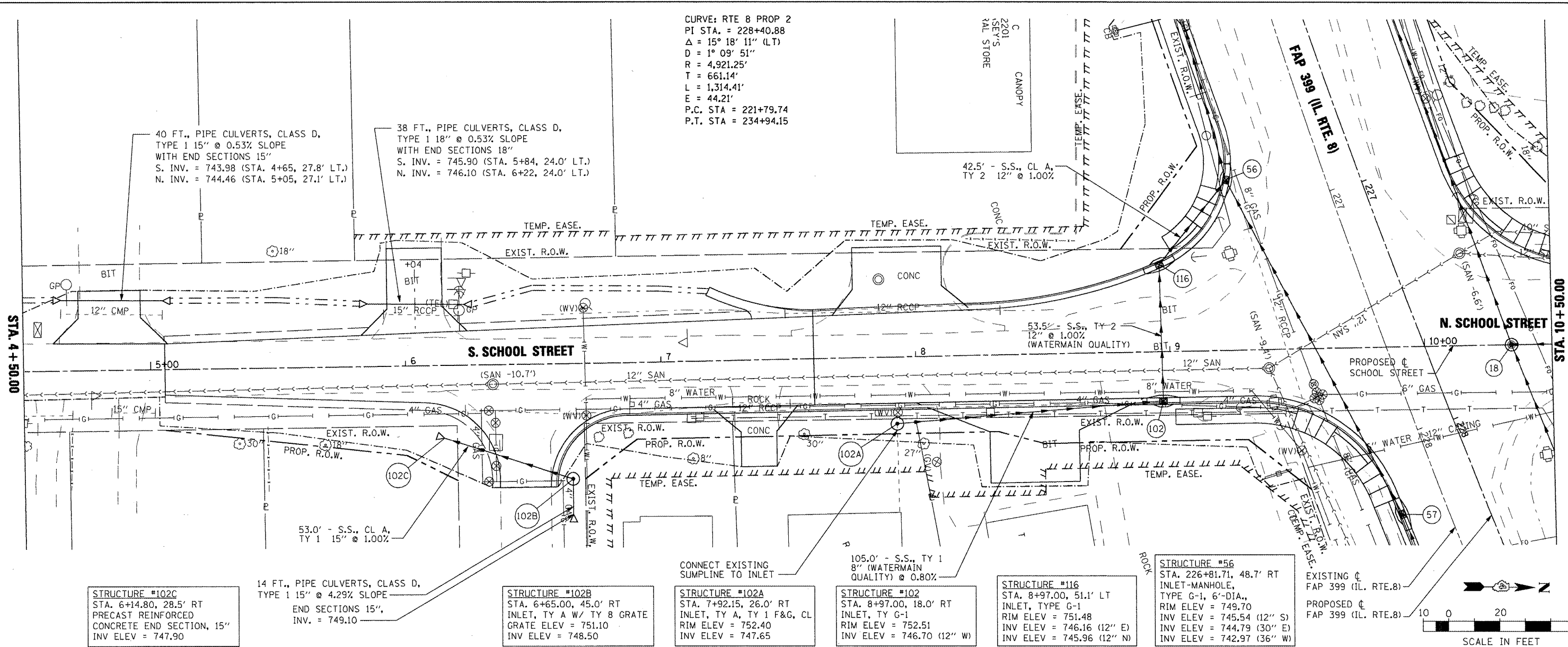
DATE	
BY	
SURVEYED	
PLOTTED	
CHECKED	
DATE	
NOTE BOOK	
NO.	
FILE NAME	

DATE	
BY	
SURVEYED	
PLOTTED	
CHECKED	
DATE	
NOTE BOOK	
NO.	
FILE NAME	

CURVE: RTE 8 PROP 2  
 PI STA. = 228+40.88  
 $\Delta = 15^\circ 18' 11''$  (LT)  
 $D = 1^\circ 09' 51''$   
 $R = 4,921.25'$   
 $T = 661.14'$   
 $L = 1,314.41'$   
 $E = 44.21'$   
 P.C. STA = 221+79.74  
 P.T. STA = 234+94.15

STA. 4+50.00

STA. 10+50.00



STRUCTURE #102C  
 STA. 6+14.80, 28.5' RT  
 PRECAST REINFORCED  
 CONCRETE END SECTION, 15"  
 INV ELEV = 747.90

14 FT., PIPE CULVERTS, CLASS D,  
 TYPE 1 15" @ 4.29% SLOPE  
 END SECTIONS 15",  
 INV. = 749.10

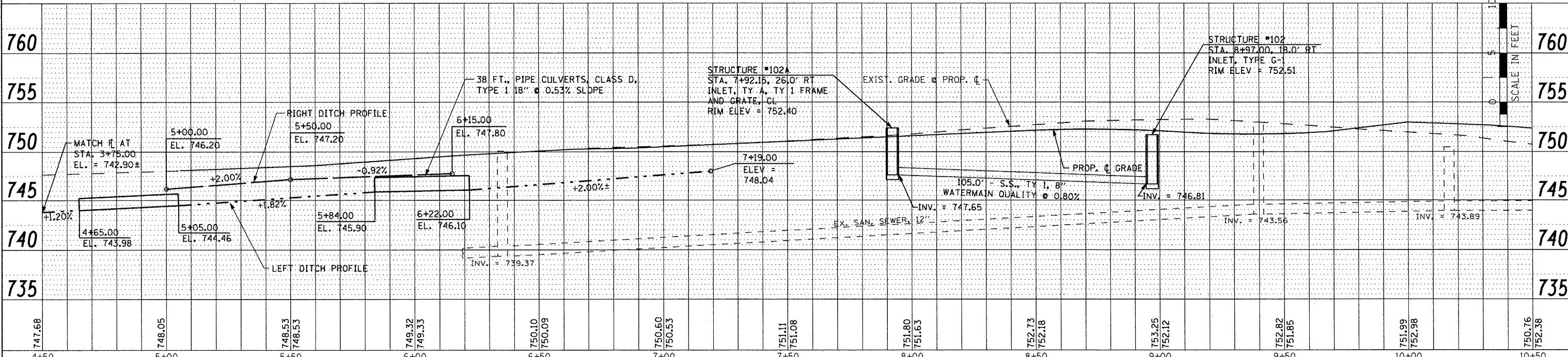
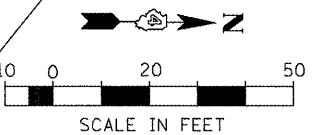
STRUCTURE #102B  
 STA. 6+65.00, 45.0' RT  
 INLET, TY A W/ TY 8 GRATE  
 GRATE ELEV = 751.10  
 INV ELEV = 748.50

STRUCTURE #102A  
 STA. 7+92.15, 26.0' RT  
 INLET, TY A, TY 1 F&G, CL  
 RIM ELEV = 752.40  
 INV ELEV = 747.65

STRUCTURE #102  
 STA. 8+97.00, 18.0' RT  
 INLET, TY G-1  
 RIM ELEV = 752.51  
 INV ELEV = 746.70 (12" W)

STRUCTURE #116  
 STA. 8+97.00, 51.1' LT  
 INLET, TYPE G-1  
 RIM ELEV = 751.48  
 INV ELEV = 745.54 (12" S)  
 INV ELEV = 746.16 (12" E)  
 INV ELEV = 744.79 (30" E)  
 INV ELEV = 742.97 (36" W)

STRUCTURE #56  
 STA. 226+81.71, 48.7' RT  
 INLET-MANHOLE,  
 TYPE G-1, 6'-DIA.,  
 RIM ELEV = 749.70  
 INV ELEV = 745.54 (12" S)  
 INV ELEV = 744.79 (30" E)  
 INV ELEV = 742.97 (36" W)



FILE NAME =	USER NAME = IDDT	DESIGNED -	REVISED -	STATE OF ILLINOIS DEPARTMENT OF TRANSPORTATION				FAP 399 (IL RTE. 8) SOUTH SCHOOL STREET - DRAINAGE PLAN AND PROFILE				F.A.P. RTE.	SECTION	COUNTY	TOTAL SHEETS	SHEET NO.
PLLOT SCALE = 40.00' / IN.	PLLOT DATE = 10/21/2011	CHECKED -	REVISED -	SCALE: AS SHOWN				SHEET NO. OF SHEETS				399	36 R-7	TAZEWELL	390	201
		DATE -	REVISED -	STA. 5+00.00 TO STA. 10+50.00								CONTRACT NO. 68370				