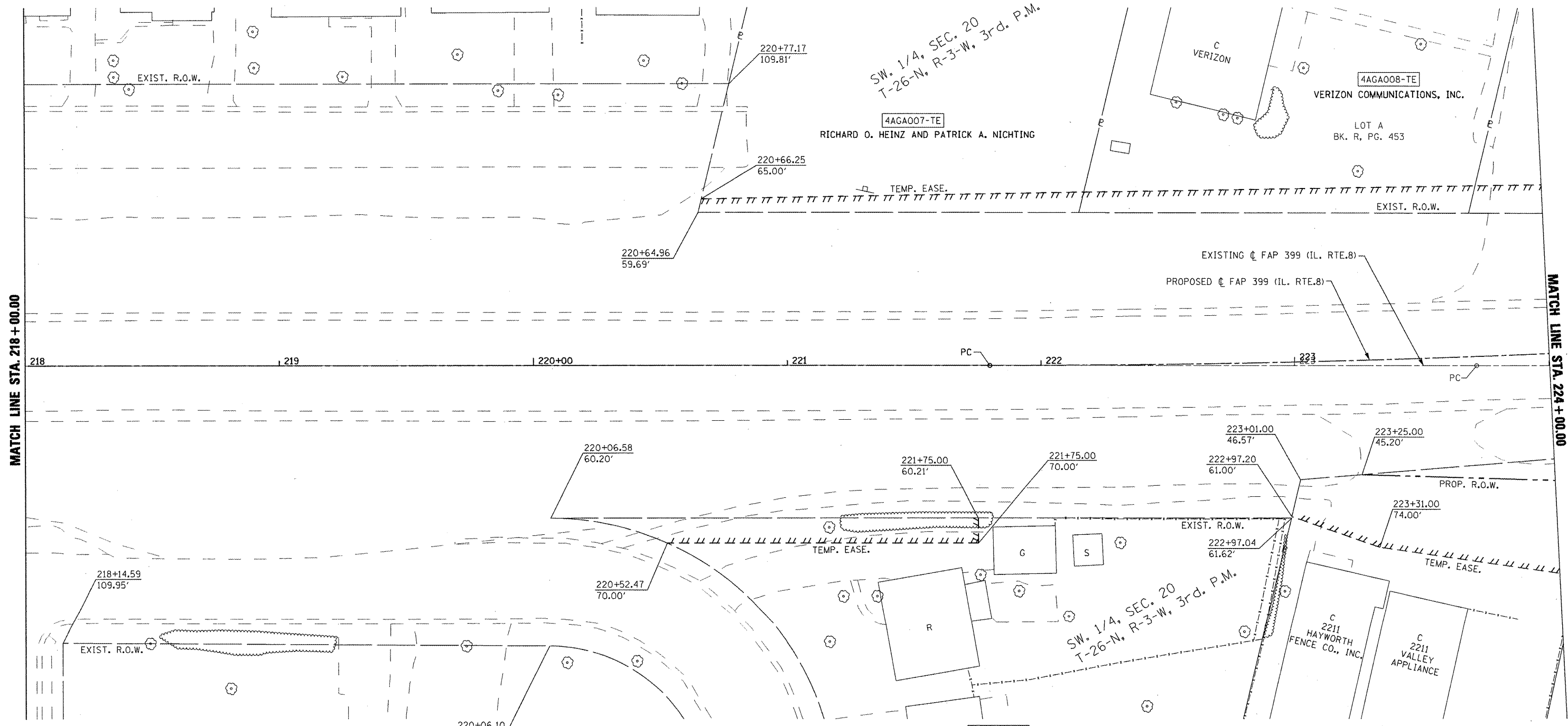
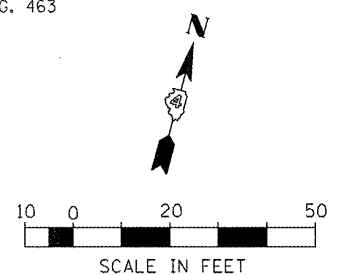


MATCH LINE STA. 218 + 00.00

MATCH LINE STA. 224 + 00.00



PROP. FAP 399 (IL 8) PI STA. = 228+40.88 Δ = 15° 18' 11" (LT) D = 1° 09' 51" R = 4,921.25' T = 661.14' L = 1,314.41' E = 44.21' P.C. STA = 221+79.74 P.T. STA = 234+94.15	EXIST. FAP 399 (IL 8) PI STA. = 228+28.90 Δ = 13° 52' 36" (LT) D = 1° 31' 31" R = 3,756.69' T = 457.16' L = 909.85' E = 27.71' P.C. STA. = 223+71.74 P.T. STA. = 232+81.59
--	---



FOR OLD ROW SEE:
PLAN FILE 4 SHEETS 14 & 18B

PLAT FILE: 17

FILE NAME = x:\projects\200803566\dgn\04-Rte8-sht-R	USER NAME = IDOT W-4.dgn	DESIGNED - DRAWN -	REVISED - REVISED -	STATE OF ILLINOIS DEPARTMENT OF TRANSPORTATION	FAP 399 (IL RTE. 8) RIGHT OF WAY PLANS			F.A.P. RTE. 399	SECTION 36 R-7	COUNTY TAZEWELL	TOTAL SHEETS 390	SHEET NO. 206
PLOT SCALE = 48.004 FT / IN.					CHECKED -	REVISED -	SCALE: AS SHOWN			CONTRACT NO. 68370		
PLOT DATE = 10/21/2011					DATE = 10-21-11	REVISED -	SHEET NO. OF SHEETS			ILLINOIS FED. AID PROJECT		
						STA. 218+00.00 TO STA. 224+00.00						