
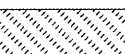


FAP 399 (IL. RTE. 8)
 STA. 240+50.31
 GRANT STREET
 STA. 10+00.00

MATCH LINE STA. 236+00.00

MATCH LINE STA. 242+00.00

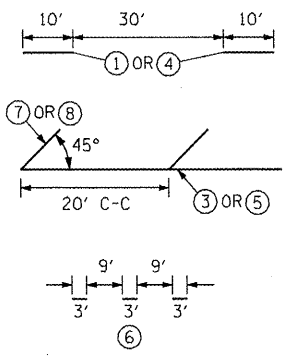
LANDSCAPING LEGEND

-  SEEDING, CLASS 2A
-  SODDING, SALT TOLERANT

PAVEMENT MARKING LEGEND

- ① PREFORMED PLASTIC PAVEMENT MARKING - LINE 6" WHITE SKIP DASH
- ② EPOXY PAVEMENT MARKING - LINE 4" YELLOW SOLID (DOUBLE LINE)
- ③ EPOXY PAVEMENT MARKING - LINE 4" YELLOW SOLID
- ④ EPOXY PAVEMENT MARKING - LINE 4" YELLOW SKIP DASH
- ⑤ EPOXY PAVEMENT MARKING - LINE 8" WHITE SOLID
- ⑥ EPOXY PAVEMENT MARKING - LINE 8" WHITE SKIP DASH
- ⑦ EPOXY PAVEMENT MARKING - LINE 12" YELLOW SOLID
- ⑧ EPOXY PAVEMENT MARKING - LINE 12" WHITE SOLID
- ⑨ EPOXY PAVEMENT MARKING - LINE 24" WHITE SOLID (STOP BAR)
- ⑩ EPOXY PAVEMENT MARKING - LETTERS AND SYMBOLS

1. PAVEMENT MARKINGS SHALL BE IN ACCORDANCE WITH DISTRICT CADD DETAILS - STANDARD 780001.



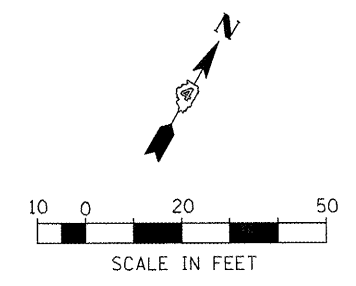
RAISED REFLECTIVE PAVEMENT MARKERS (RRPM) LEGEND

- ① Δ ONE-WAY CRYSTAL MARKER AT 80' CENTERS
- ② ◆ TWO-WAY AMBER MARKER AT 40' CENTERS

SIGN POST LEGEND

- WOOD POST LENGTH
- OFFSET FROM EDGE OF PAVEMENT

• SEE STANDARD 720006 FOR OFFSET



FILE NAME =	USER NAME = IDOT	DESIGNED -	REVISED -	STATE OF ILLINOIS DEPARTMENT OF TRANSPORTATION	FAP 399 (IL. RTE. 8) PAVEMENT MARKING & LANDSCAPING PLANS	F.A.P. RTE. 399	SECTION 36 R-7	COUNTY TAZEWELL	TOTAL SHEETS 390	SHEET NO. 245		
x:\projects\200803566\dgn\04-Rte8-sht-P	PK-7.dgn	DRAWN -	REVISED -			SCALE: AS SHOWN	SHEET NO. OF SHEETS	STA. 236+00.00 TO STA. 242+00.00	ILLINOIS FED. AID PROJECT			
		CHECKED -	REVISED -									
		DATE - 10-21-11	REVISED -									