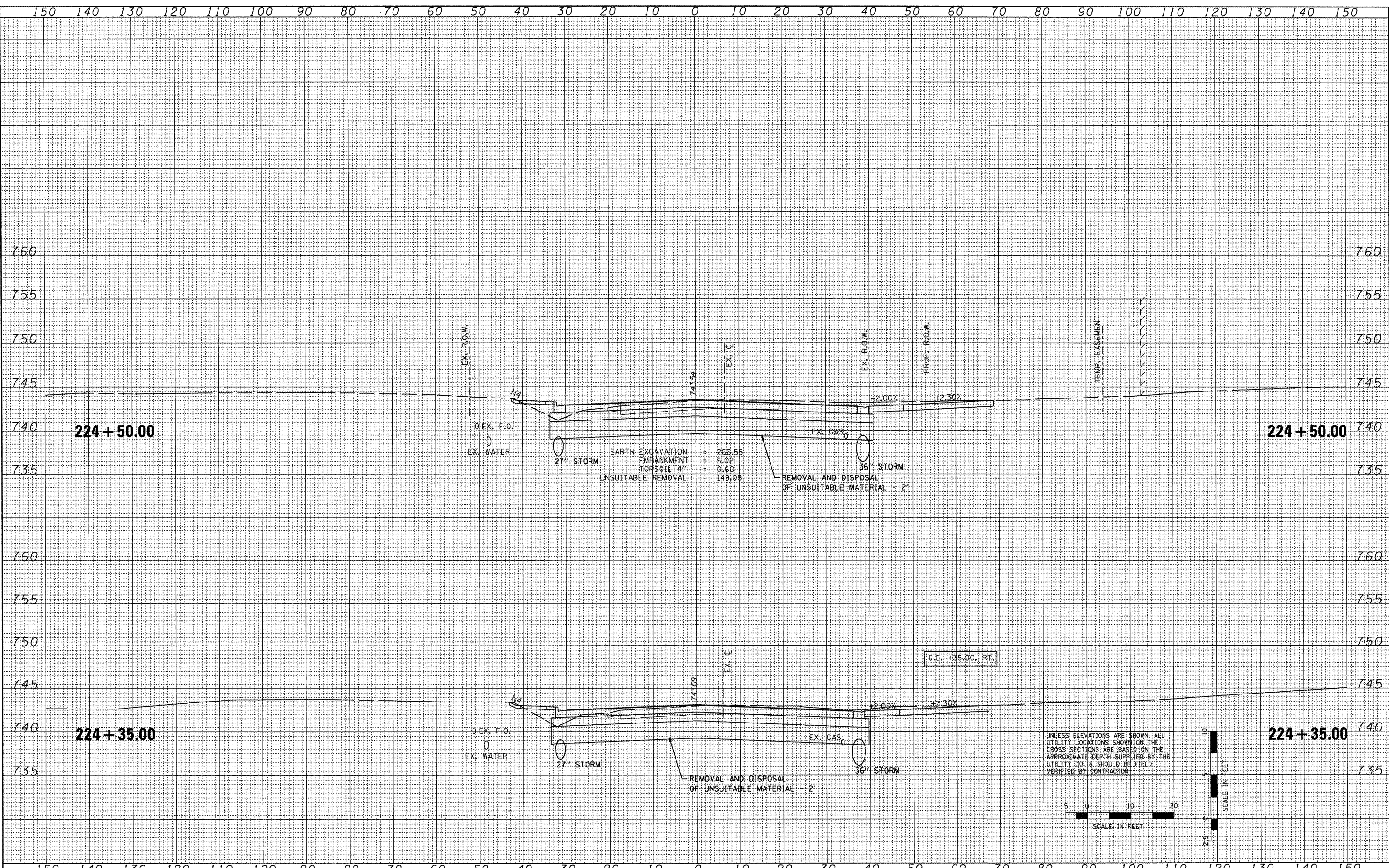
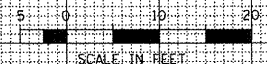


FINAL SURVEY	DATE
NO.	
NO.	
NO.	
NO.	
NO.	

ORIGINAL SURVEY	DATE
NO.	
NO.	
NO.	
NO.	
NO.	



UNLESS ELEVATIONS ARE SHOWN, ALL UTILITY LOCATIONS SHOWN ON THE CROSS SECTIONS ARE BASED ON THE APPROXIMATE DEPTH SUPPLIED BY THE UTILITY CO. & SHOULD BE FIELD VERIFIED BY CONTRACTOR



FILE NAME =	USER NAME = IDOT	DESIGNED -	REVISED -
xx:\projects\200803566\dgn\gpk\X5-IL-RT8-sheets.dgn		DRAWN -	REVISED -
PLOT SCALE = 20.7420' / IN.		CHECKED -	REVISED -
PLOT DATE = 10/21/2011		DATE = 10-21-11	REVISED -

**STATE OF ILLINOIS  
DEPARTMENT OF TRANSPORTATION**

**FAP 399 (IL RTE. 8)  
CROSS SECTIONS**

SCALE: SHEET NO. OF SHEETS STA. 224+35.00 TO STA. 224+50.00

F.A.P. RTE. 399	SECTION 36 R-7	COUNTY TAZEWELL	TOTAL SHEETS 390	SHEET NO. 327
ILLINOIS FED. AID PROJECT			CONTRACT NO. 68370	