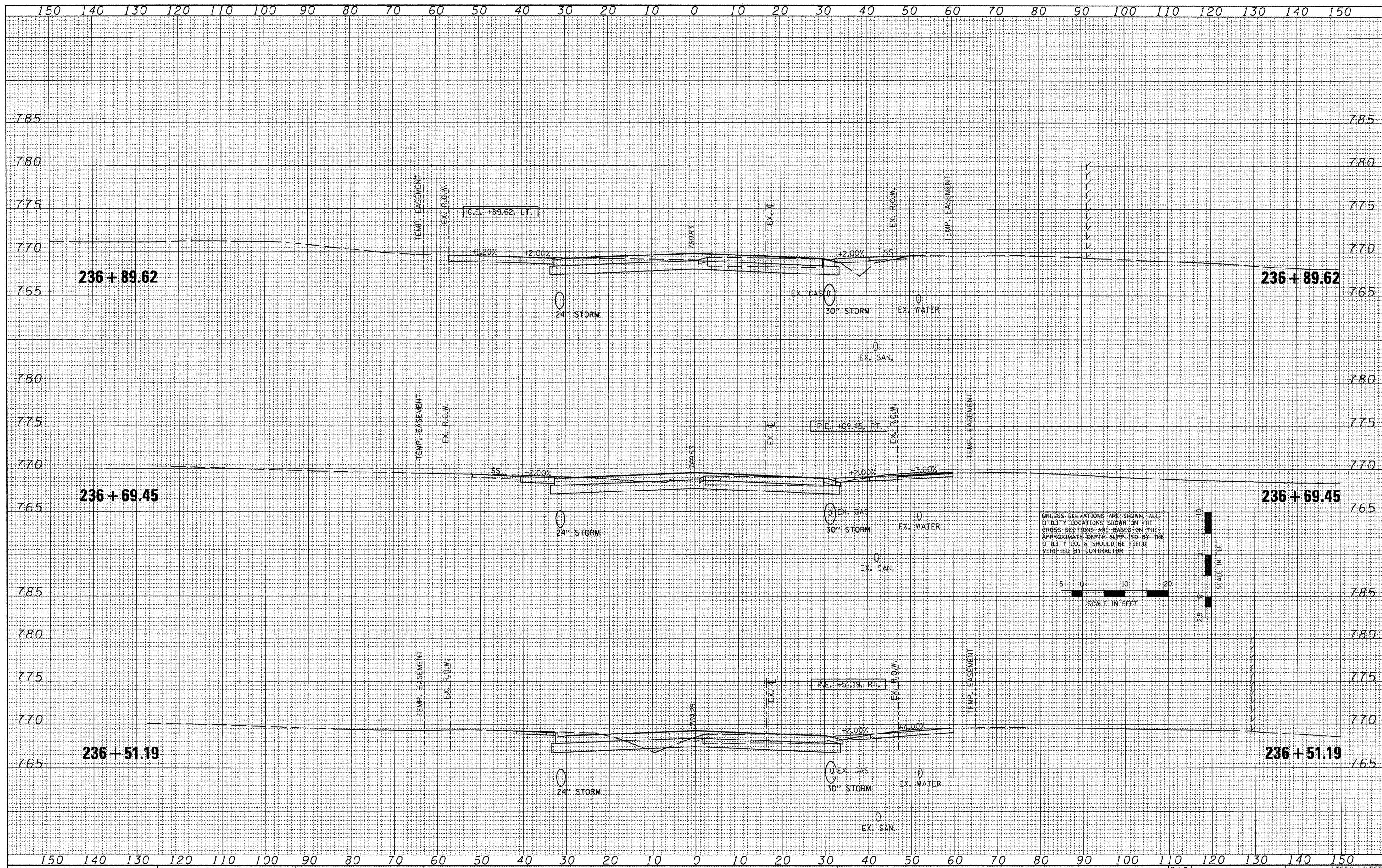
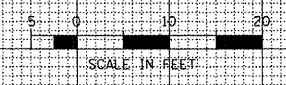


DATE	
BY	
FINAL SURVEY	
PLOTTED	
NOTE BOOK	
NO.	

DATE	
BY	
ORIGINAL SURVEY	
PLOTTED	
NOTE BOOK	
NO.	



UNLESS ELEVATIONS ARE SHOWN, ALL UTILITY LOCATIONS SHOWN ON THE CROSS SECTIONS ARE BASED ON THE APPROXIMATE DEPTH SUPPLIED BY THE UTILITY CO. & SHOULD BE FIELD VERIFIED BY CONTRACTOR



FILE NAME = x:\projects\200803566\dgn\gpk\XS-IL-RT8-sheets.dgn

USER NAME = IOOT	DESIGNED -	REVISED -
	DRAWN -	REVISED -
PLOT SCALE = 20.7428' / IN.	CHECKED -	REVISED -
PLOT DATE = 10/21/2011	DATE - 10-21-11	REVISED -

**STATE OF ILLINOIS
DEPARTMENT OF TRANSPORTATION**

**FAP 399 (IL RTE. 8)
CROSS SECTIONS**

SCALE: SHEET NO. OF SHEETS STA. 236+51.19 TO STA. 236+89.62

F.A.P. RTE. 399	SECTION 36 R-7	COUNTY TAZEWELL	TOTAL SHEETS 390	SHEET NO. 343
			CONTRACT NO. 68370	
ILLINOIS FED. AID PROJECT				