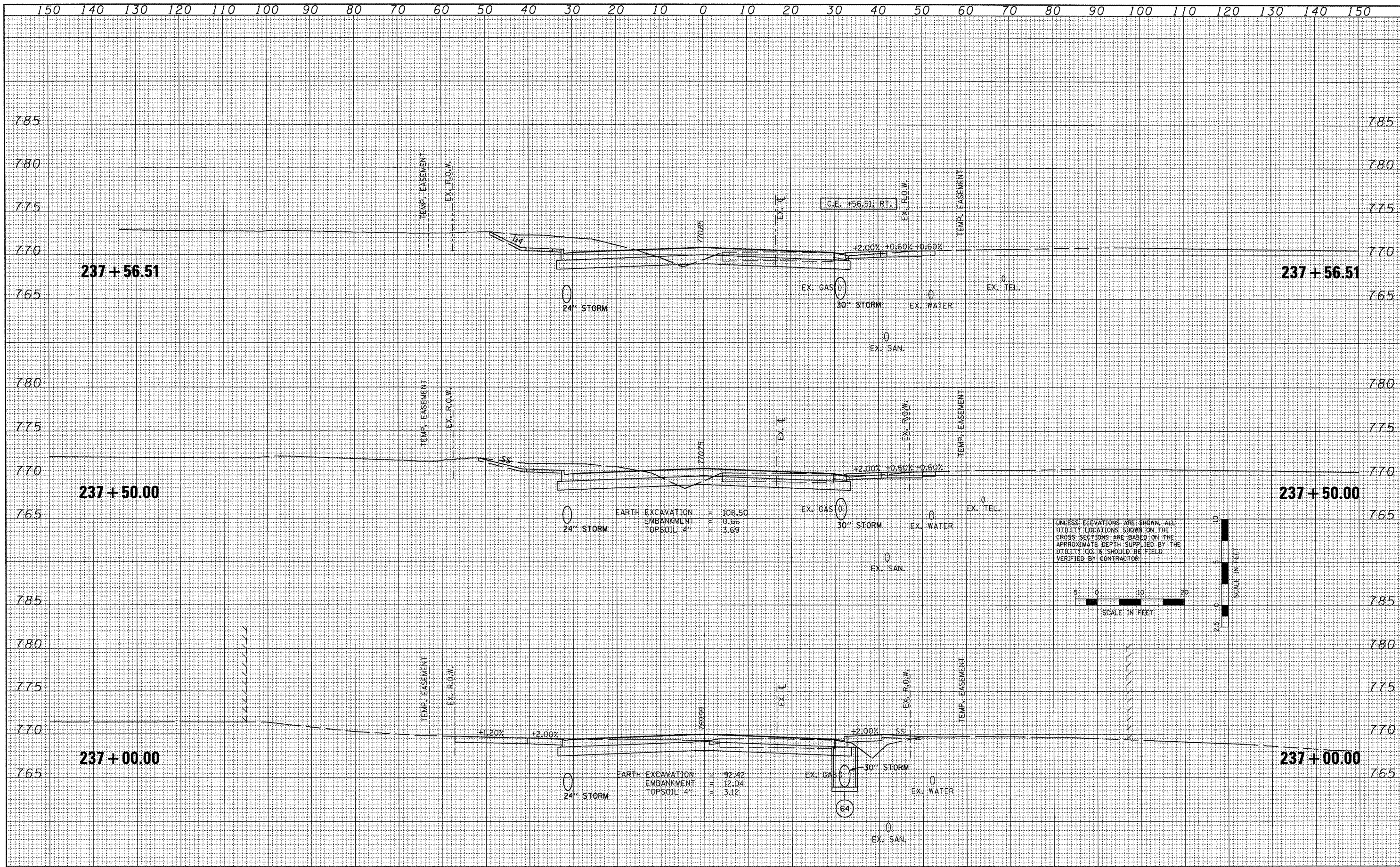
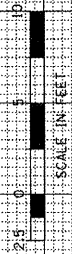
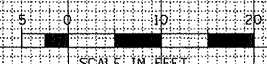


DATE	
BY	
DESIGNED	
DRAWN	
CHECKED	
DATE	

DATE	
BY	
DESIGNED	
DRAWN	
CHECKED	
DATE	



UNLESS ELEVATIONS ARE SHOWN, ALL UTILITY LOCATIONS SHOWN ON THE CROSS SECTIONS ARE BASED ON THE APPROXIMATE DEPTH SUPPLIED BY THE UTILITY CO. & SHOULD BE FIELD VERIFIED BY CONTRACTOR



FILE NAME = x:\projects\200803566\dgn\pk\XS-IL-RT8-sheets.dgn
 USER NAME = I00T
 PLOT SCALE = 20.7420' / IN.
 PLOT DATE = 10/21/2011

DESIGNED -	REVISED -
DRAWN -	REVISED -
CHECKED -	REVISED -
DATE - 10-21-11	REVISED -

STATE OF ILLINOIS
DEPARTMENT OF TRANSPORTATION

FAP 399 (IL RTE. 8)
CROSS SECTIONS

SCALE: SHEET NO. OF SHEETS STA. 237+00.00 TO STA. 237+56.51

F.A.P. RTE. 399	SECTION 36 R-7	COUNTY TAZEWELL	TOTAL SHEETS 390	SHEET NO. 344
			CONTRACT NO. 68370	
ILLINOIS FED. AID PROJECT				