

**INDEX OF SHEETS**

- 1 COVER SHEET
- 2 GENERAL NOTES AND COMMITMENTS
- 3 SUMMARY OF QUANTITIES
- 4 CALENDAR OF LANDSCAPING MAINTENANCE
- 5 SCHEDULE OF EXISTING LANDSCAPING ITEMS
- 6 OVERALL PLAN
- 7-12 PLAN SHEETS 1-6  
HIGHWAY STANDARDS

**LIST OF STANDARDS**

- 701001-02
- 701006-03
- 701011-02
- 701101-02
- 701106-02
- 701201-04
- 701301-04
- 701400-05
- 701406-06
- 701411-08
- 701426-04
- 701901-02

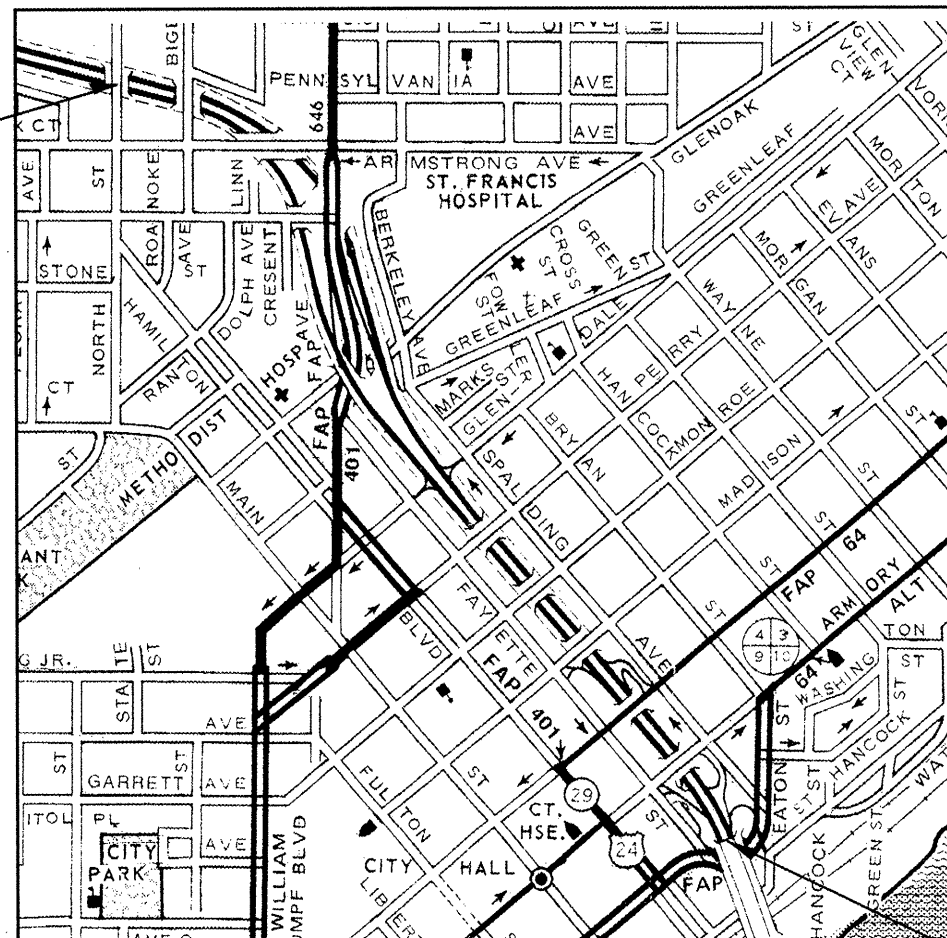
J.U.L.I.E.  
JOINT UTILITY LOCATION INFORMATION FOR EXCAVATION  
1-800-892-0123  
OR 811

**PROJECT ENGINEER: CHRISTOPHER MAUSHARD 309-671-3453**  
**LANDSCAPE ARCHITECT: JAMES ALLWILL 309-671-4484**  
**DESIGNER: BETHANY EICHHORN 309-671-3467**  
**CONTRACT NO. 68A60**  
**CATALOG NO. 034708-00D**

**STATE OF ILLINOIS**  
**DEPARTMENT OF TRANSPORTATION**  
**DIVISION OF HIGHWAYS**  
**PROPOSED**  
**HIGHWAY PLANS**

**FAI ROUTE 74 (I-74)**  
**SECTION 72(7,8,9,9-1)LS-3**

**LANDSCAPE MAINTENANCE**  
**PEORIA COUNTY**  
**C-94-003-12**



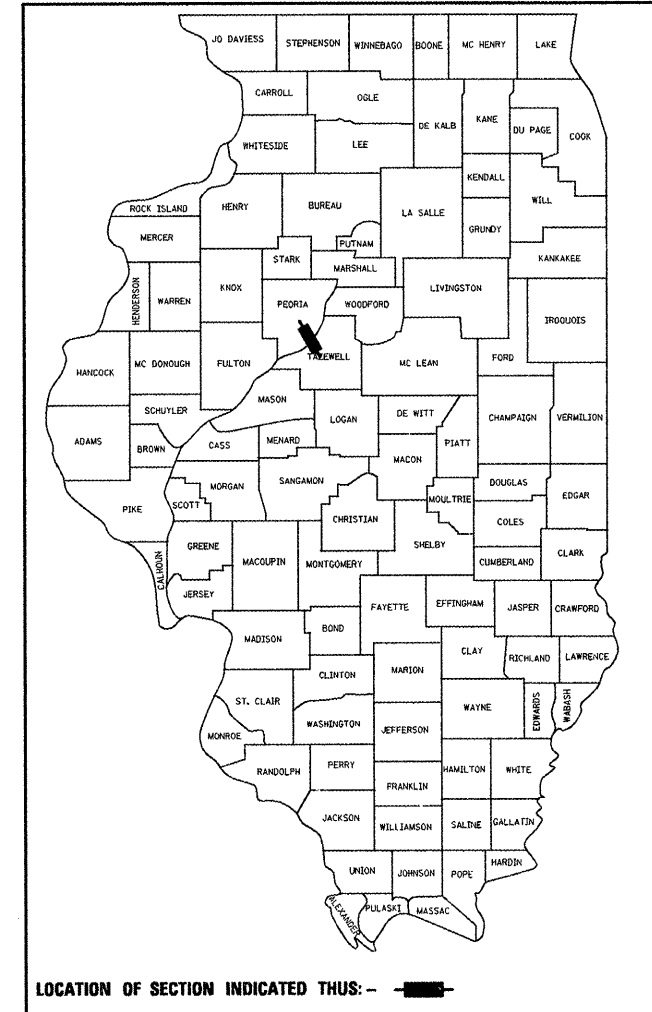
PROJECT BEGINS  
STA. 148+450

PROJECT ENDS  
STA. 150+400

GROSS LENGTH = 1.95 KM. = 1.20 MILE  
 NET LENGTH = 1.84 KM. = 1.14 MILE

F.A.J. RTE.	SECTION	COUNTY	TOTAL SHEETS	SHEET NO.
74	72(7,8,9,9-1)LS-3	PEORIA	12	1
		ILLINOIS	CONTRACT NO. 68A60	

D-94-004-12



**DESCRIPTION OF WORK**

THE WORK ON THIS PROJECT CONSISTS OF MAINTENANCE OF EXISTING TREES, SHRUBS, VINES, GRASSES AND ASSOCIATED COLLATERAL WORK.

STATE OF ILLINOIS  
 DEPARTMENT OF TRANSPORTATION  
 DIVISION OF HIGHWAYS

SUBMITTED Oct 28 20 11  
*Joseph E. Crowl*  
 DEPUTY DIRECTOR OF HIGHWAYS, REGION ENGINEER

December 9 20 11  
*Scott E. Stitt P.E.*  
 ENGINEER OF DESIGN AND ENVIRONMENT

December 9 20 11  
*William R. Freyler*  
 INTERIM DIRECTOR OF HIGHWAYS, CHIEF ENGINEER

**PRINTED BY THE AUTHORITY  
 OF THE STATE OF ILLINOIS**

PROJECT SPECIFIC GENERAL NOTES

BEFORE STARTING ANY WORK, THE CONTRACTOR SHALL COORDINATE WITH J.U.L.I.E. FOR FIELD LOCATIONS OF BURIED ELECTRIC, TELEPHONE, AND GAS UTILITIES. A 48 HOUR NOTICE IS REQUIRED FOR LOCATION OF EXISTING UTILITIES. SEE ARTICLE 107.31 OF THE STANDARD SPECIFICATIONS.

THE CONTRACTOR WILL BE RESPONSIBLE FOR FIELD VERIFICATION OF LOCATIONS FOR ALL LANDSCAPING ITEMS.

WHERE SECTION OR SUBSECTION MONUMENTS ARE ENCOUNTERED, THE ENGINEER SHALL BE NOTIFIED. THE CONTRACTOR SHALL PROTECT AND PRESERVE ALL PROPERTY MARKERS AND MONUMENTS UNTIL THE OWNER, SURVEYOR, OR AGENT HAS WITNESSED THEIR LOCATION.

REMOVAL OF UNDERBRUSH, DEBRIS OR OTHER MISCELLANEOUS ITEMS TO PROVIDE CARE TO LANDSCAPING ITEMS SHALL BE INCLUDED IN THE COST OF THE ASSOCIATED PAY ITEMS.

COMMITMENTS

COMMITMENTS ARE NOT TO BE ALTERED WITHOUT THE WRITTEN CONSENT OF ALL PARTIES TO WHICH THE COMMITMENT WAS MADE

NO COMMITMENTS HAVE BEEN INCURRED ON THIS PROJECT.

MOWING

MOWING SHALL BE DONE BY OTHERS (IDOT)

NOTE

TRIM SHRUBS AROUND CONTROL BOXES THIS ITEM WILL BE INCLUDED IN "SHRUB CARE". SEE PAGES 8-10 FOR JUNCTION BOXES.

FILE NAME = 174 LANDSCAPE LAYOUT.dgn	USER NAME = eschhornbr	DESIGNED -	REVISED -	<b>STATE OF ILLINOIS DEPARTMENT OF TRANSPORTATION</b>	<b>GENERAL NOTES AND COMMITMENTS</b>				F.A.I. RTE.	SECTION	COUNTY	TOTAL SHEETS	SHEET NO.
	PLOT SCALE = 24.1896' / in.	CHECKED -	REVISED -						74	72(7.8,9,9-1)LS-3	PEORIA	12	2
	PLOT DATE = 10/27/2011	DATE -	REVISED -		SCALE:	SHEET NO.	OF	SHEETS	STA.	TO STA.	ILLINOIS FED. AID PROJECT <b>CONTRACT NO. 68A60</b>		

SUMMARY OF QUANTITIES			URBAN TOTAL QUANTITIES	CONSTRUCTION TYPE CODE		
CODE NO	ITEM	UNIT		100% STATE 0031		
67100100	MOBILIZATION	L SUM	1	1		
K0026700	TREE CARE	EACH	413	413		
K0026810	SHRUB CARE	EACH	12573	12573		
K0026820	VINECARE	each	1060	1060		
K0026850	PERENNIAL PLANT CARE	SQ YD	17725	17725		
K0029634	WEED CONTROL, PRE-EMERGENT GRANULAR HERBICIDE	POUND	200	200		
X7010216	TRAFFIC CONTROL & PROTECTION (SPECIAL)	L SUM	1	1		
Z0015500	DEBRIS REMOVAL	L SUM	1	1		

FILE NAME 174 LANDSCAPE LAYOUT.dgn	USER NAME = eschhornbr	DESIGNED -	REVISED -
		DRAWN -	REVISED -
	PLOT SCALE = 24.1896' / 1"	CHECKED -	REVISED -
	PLOT DATE = 10/27/2011	DATE -	REVISED -

**STATE OF ILLINOIS  
DEPARTMENT OF TRANSPORTATION**

**SUMMARY OF QUANTITIES**

F.A. RTE.	SECTION	COUNTY	TOTAL SHEETS	SHEET NO.
74	72(7,8,9,9-1)LS-3	PEORIA	12	3
FED. ROAD DIST. NO.			ILLINOIS FED. AID PROJECT	
			CONTRACT NO. 68A60	

## CALENDAR OF MAINTENANCE

PHASE	WORK DATES		MAINTENANCE WORK
	FROM	TO	
I	June 1	June 30	Mow turf areas to a turf height of 3 inches by IDOT
I	June 1	June 30	Perennial plant care
I	June 1	June 30	Woody plant care. Work cycle must be complete and acceptable on the inspection date of June 30
I		July 30	Inspection date for all woody plant care
II	July 1	Sept 30	Mow turf areas to a turf height of 3 inches by IDOT
II	July 1	Sept 30	Perennial plant care
II	July 1	Sept 30	Woody plant care. Work cycle must be complete and acceptable on the inspection date of Sept 30
II		Sept 30	Inspection date for all woody plant care

FILE NAME = 174 LANDSCAPE LAYOUT.dgn	USER NAME = eschhornbr	DESIGNED -	REVISED -
		DRAWN -	REVISED -
	PLOT SCALE = 24.1896' / 1" =	CHECKED -	REVISED -
	PLOT DATE = 10/27/2011	DATE -	REVISED -

**STATE OF ILLINOIS  
DEPARTMENT OF TRANSPORTATION**

**CALENDAR OF LANDSCAPE MAINTENANCE**

SCALE: SHEET NO. OF SHEETS STA. TO STA.

F.A.I. RTE.	SECTION	COUNTY	TOTAL SHEETS	SHEET NO.
74	72(7,8,9,9-1)LS-3	PEORIA	12	4
ILLINOIS FED. AID PROJECT			CONTRACT NO. 68A60	



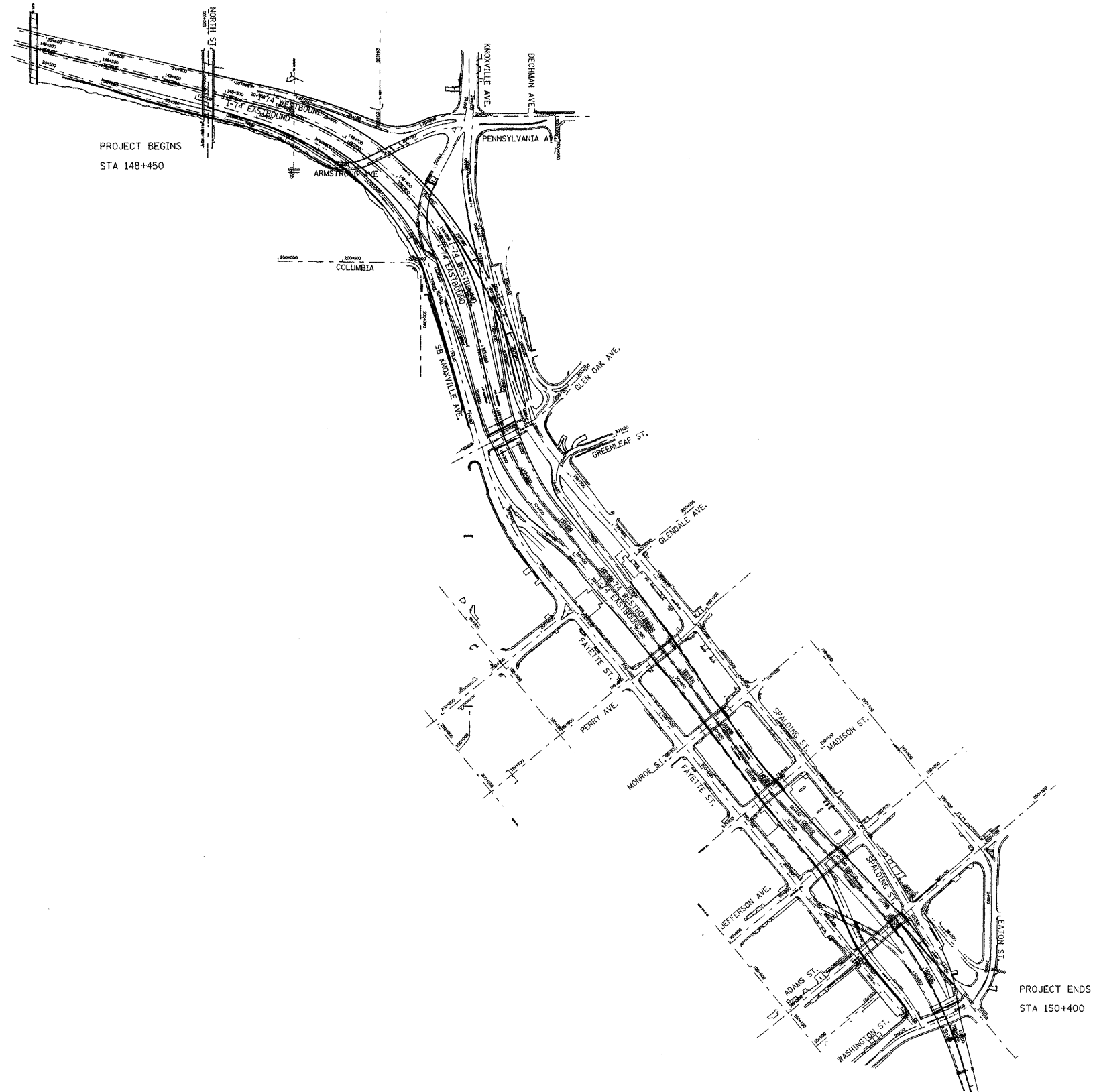
# SCHEDULE OF EXISTING PLANTINGS

KEY	ITEM	COMMON NAME	SIZE	NIT	TOTAL	LOCATION					
						L1	L2	L3	L4	L5	L6
DECIDUOUS TREESXXX											
CC	CARYA CORDIFORMIS	BITTERNUT HICKORY	1-1/2" CALIPER, BALLED AND BURLAPPED	EACH	14	4	0	0	8	2	0
GD	GYMNOCLADUS DIOICUS	KENTUCKY COFFEETREE	2-1/2" CALIPER, BALLED AND BURLAPPED	EACH	20	0	0	0	19	1	0
QA	QUERCUS BICOLOR	SWAMP OAK	2" CALIPER, BALLED AND BURLAPPED	EACH	79	6	19	3	1	9	41
AN	ACER NIGRUM	BLACK MAPLE	2-1/2" CALIPER, BALLED AND BURLAPPED	EACH	14	5	8	0	0	1	0
GB	GINKGO BILOBA	GINKGO	3" CALIPER, BALLED AND BURLAPPED	EACH	19	4	8	0	0	0	7
GT	GLEDTISIA TRIACANTHOS INERMIS SKYLINE	SKYLINE THORNLESS HONEYLOCUST	2-1/2" CALIPER, BALLED AND BURLAPPED	EACH	24	0	0	2	0	5	17
UR	ULMUS 'REGAL	REGAL ELM	2-1/2" CALIPER, BALLED AND BURLAPPED	EACH	35	0	19	0	0	0	16
ORNAMENTAL TREES											
AC	AMELANCHIER X GRANDIFLORA	AMELANCHIER X GRANDIFLORA	8' HEIGHT, SHRUB FORM, BALLED AND BURLAPPED	EACH	37	0	5	6	6	3	17
SA	SYRINGA RETICULATA	SYRINGA RETICULATA	7' HEIGHT, CLUMP FORM, BALLED AND BURLAPPED	EACH	42	4	18	0	0	0	20
SP	SYRINGA PEKINENSIS	SYRINGA PEKINENSIS	7' HEIGHT, CLUMP FORM, BALLED AND BURLAPPED	EACH	7	0	0	0	7	0	0
MP	MALUS PRAIRIFIRE	PRAIRIFIRE CRABAPPLE	6' HEIGHT, CLUMP FORM, BALLED AND BURLAPPED	EACH	36	6	19	5	1	5	0
EVERGREEN TREES											
PN	PINUS NIGRA	AUSTRIAN PINE	3' HEIGHT, CONTAINER	EACH	86	28	22	6	13	11	6
SHRUBS											
AF	AMOUHPA FRUITCOSA	INDIGO BUSH	CONTAINER GROWN, 3-GALLON	EACH	91	0	62	0	0	29	0
FS	FORSYTHIA NORTHERN SUN	NORTHERN SUN BORDER FORSYTHIA	3' HEIGHT, CONTAINER	EACH	489	0	90	0	0	204	195
HV	HAMAMELIS VERNALIS	VERNAL WITCH HAZEL	2' HEIGHT, BALLED AND BURLAPPED	EACH	187	0	167	0	20	0	0
HA	HYDRANGEA ARBORESCENS ANNABELLE	ANNABELLE SMOOTH HYDRANGEA	2' HEIGHT CONTAINER	EACH	22	0	0	5	17	0	0
PA	PEROVSKIA ATRIPLICIFOLIA	PEROVSKIA ATRIPLICIFOLIA	PEROVSKIA ATRIPLICIFOLIA	EACH	1290	0	880	410	0	0	0
RA	RHUS AROMATICA	FRAGRANT SUMAC	2' WIDTH, CONTAINER	EACH	2863	69	640	0	777	184	1193
RG	RHUS GLABRA	SMOOTH SUMAC	3' HEIGHT, CONTAINER	EACH	663	68	418	165	0	12	0
SPA	SYRINGA PATULA MISS KIM	MISS KIM MANCHURIAN LILAC	2' HEIGHT, CONTAINER	EACH	824	0	365	296	63	0	100
RS	RHODOTYPOS SCANDENS	BLACK JETBEAD	3' HEIGHT, CONTAINER	EACH	1510	290	725	435	24	36	0
RH	ROBINIA HISPIDA	BRISTLY LOCUST	3' HEIGHT, CONTAINER	EACH	351	0	0	100	0	89	162
RR	ROSA RUGOSA X MEIDOMONAC BONICA	BONICA RUGOSO ROSA	3' HEIGHT, CONTAINER	EACH	155	0	0	155	0	0	0
RRC	ROSA RUGOSA X CHUCKLES	CHUCKLES RUGOSA ROSA	3' HEIGHT, CONTAINER	EACH	1750	0	220	570	330	0	630
EVERGREEN SHRUBS											
JH	JUNIPERUS HORIZONTALIS HUGHES	HUGHES CREEPING JUNIPER	18" WIDTH, CONTAINER	EACH	1120	0	0	260	144	297	419
JC	JUNIPERUS CHINENSIS	KALLAYS COMPACTA	18" WIDTH, CONTAINER	EACH	1258	0	647	290	122	117	82
VINES											
PQ	PARTHENOCISSUS QUINQUEFOLIA	VIRGINIA CREEPER	1-GALLON POT	EACH	291	40	65	0	56	74	56
JT	PARTHENOCISSUS TRICUSPIDATA	BOSTON IVY	1-GALLON POT	EACH	72	48	0	0	0	24	0
CT	CLEMATIS MAXIMOWICZIANA	SWEET AUTUMN CLEMATIS	3-GALLON POT	EACH	85	14	9	0	62	0	0
CR	CAMPSIS RADICAN	MINNESOTA TRUMPET VINE	1-GALLON POT	EACH	45	0	0	0	21	24	0
LS	LONICERA SEMPERVIRENS	HONEYSUCKLE	1-GALLON POT	EACH	567	8	26	0	0	418	115
PERENNIALS AND GROUNDCOVERS											
	PERENNIAL PLANTS, WILDFLOWERS	PERENNIAL PLANTS, WILDFLOWERS		HA	0.19	0.07	0.03	0.00	0.00	0.00	0.09
	PERENNIAL PLANTS, FOR SUN	PERENNIAL PLANTS, FOR SUN	1-GALLON POT, 12" O.C.	EACH	28103	2153	4965	11750	0	0	9235
MOBILIZATION											
	TRAFFIC CONTROL AND PROTECTION (SPECIAL)			L.S.	1						

### LEGEND:

- L1 LANDSCAPE LAYOUT-1
- L2 LANDSCAPE LAYOUT-2
- L3 LANDSCAPE LAYOUT-3
- L4 LANDSCAPE LAYOUT-4
- L5 LANDSCAPE LAYOUT-5
- L6 LANDSCAPE LAYOUT-6

THIS SCHEDULE IS PROVIDED FOR INFORMATION ON LOCATION OF EXISTING PLANTINGS



FILE NAME = S:\GEN\DRAW\STD&PLNS\SQUAD5\174-OVERALL-SCHEMATIC.DGN

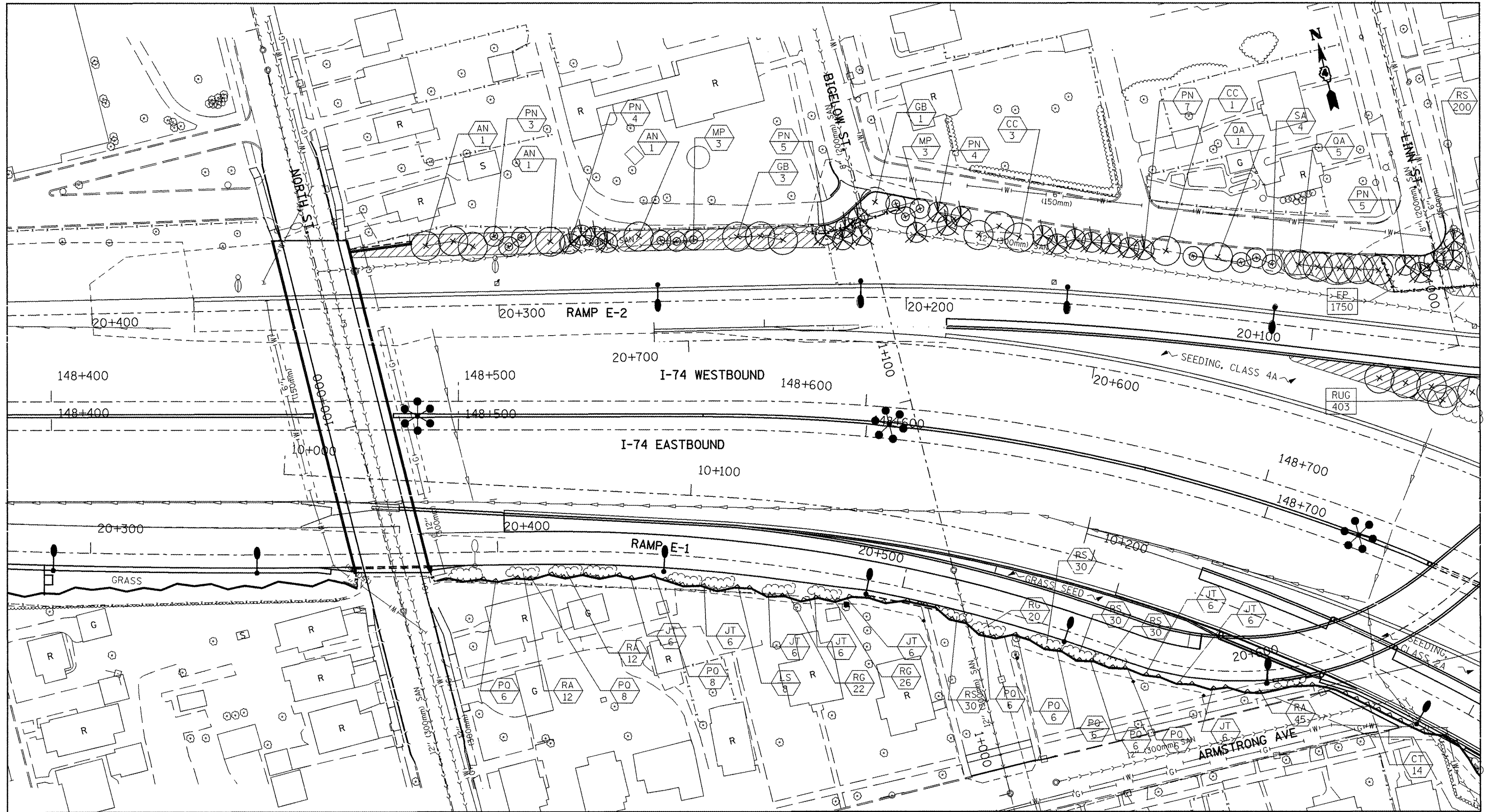
USER NAME = eschornbr	DESIGNED -	REVISED -
PLOT SCALE = 200.0000' / 1" =	DRAWN -	REVISED -
PLOT DATE = 10/24/2011	CHECKED -	REVISED -
	DATE -	REVISED -

**STATE OF ILLINOIS  
DEPARTMENT OF TRANSPORTATION**

**OVERALL PLAN**

SCALE: \_\_\_\_\_ SHEET \_\_\_\_\_ OF 12 SHEETS STA. \_\_\_\_\_ TO STA. \_\_\_\_\_

F.A.I. RTE.	SECTION	COUNTY	TOTAL SHEETS	SHEET NO.
74	72(7.8.9.9-1)S-3	PEORIA	12	6
CONTRACT NO. 68A60			ILLINOIS FED. AID PROJECT	



- LEGEND**
- VINES ON SOUND/RETAINING WALL
  - SHRUBS
  - EVERGREEN TREE
  - SMALL ORNAMENTAL TREE
  - SHADE TREE (5' DIA. MULCH SAUCER-TYP. -FOR ALL TREES & SHRUBS)
  - PERENNIAL PLANTS, WILDFLOWERS
  - PERENNIAL PLANTS, FOR SUN
  - PERENNIAL PLANTS KEY QUANTITY OF SPECIFIED PLANT
  - PLANT KEY QUANTITY OF SPECIFIED PLANT

FILE NAME =  
I74 LANDSCAPE LAYOUT.dgn

USER NAME = eschhornbr  
PLOT SCALE = 24,1096' / 1" =  
PLOT DATE = 10/27/2011

DESIGNED -  
DRAWN -  
CHECKED -  
DATE -

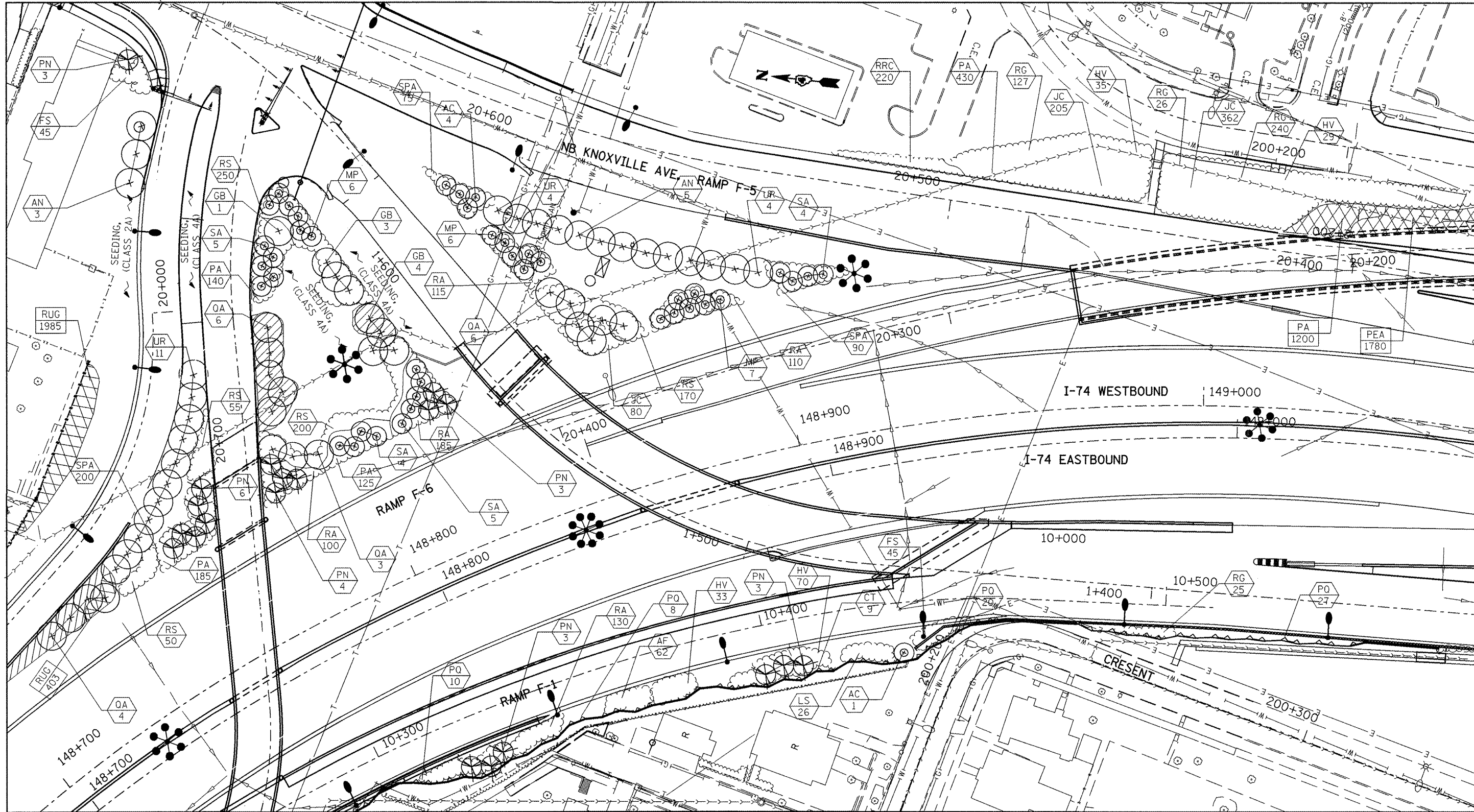
REVISED -  
REVISED -  
REVISED -  
REVISED -

**STATE OF ILLINOIS  
DEPARTMENT OF TRANSPORTATION**

**PLAN SHEET  
LAYOUT 1**

SCALE: SHEET NO. OF SHEETS STA. TO STA.

F.A.I. RTE.	SECTION	COUNTY	TOTAL SHEETS	SHEET NO.
74	72(7,8,9,9-1)LS-3	PEORIA	12	7
<b>CONTRACT NO. 68A60</b>				
ILLINOIS FED. AID PROJECT				



**LEGEND**

- VINES ON SOUND/RETAINING WALL
- SHRUBS
- EVERGREEN TREE
- SMALL ORNAMENTAL TREE
- SHADE TREE (5' DIA. MULCH SAUCER-TYP. -FOR ALL TREES & SHRUBS)
- PERENNIAL PLANTS, WILDFLOWERS
- PERENNIAL PLANTS, FOR SUN
- PERENNIAL PLANTS KEY QUANTITY OF SPECIFIED PLANT
- PLANT KEY QUANTITY OF SPECIFIED PLANT

FILE NAME = 174 LANDSCAPE LAYOUT.dgn

USER NAME = eschhornbr  
 PLOT SCALE = 24.1096' / 1" =  
 PLOT DATE = 10/27/2011

DESIGNED -  
 DRAWN -  
 CHECKED -  
 DATE -

REVISED -  
 REVISED -  
 REVISED -  
 REVISED -

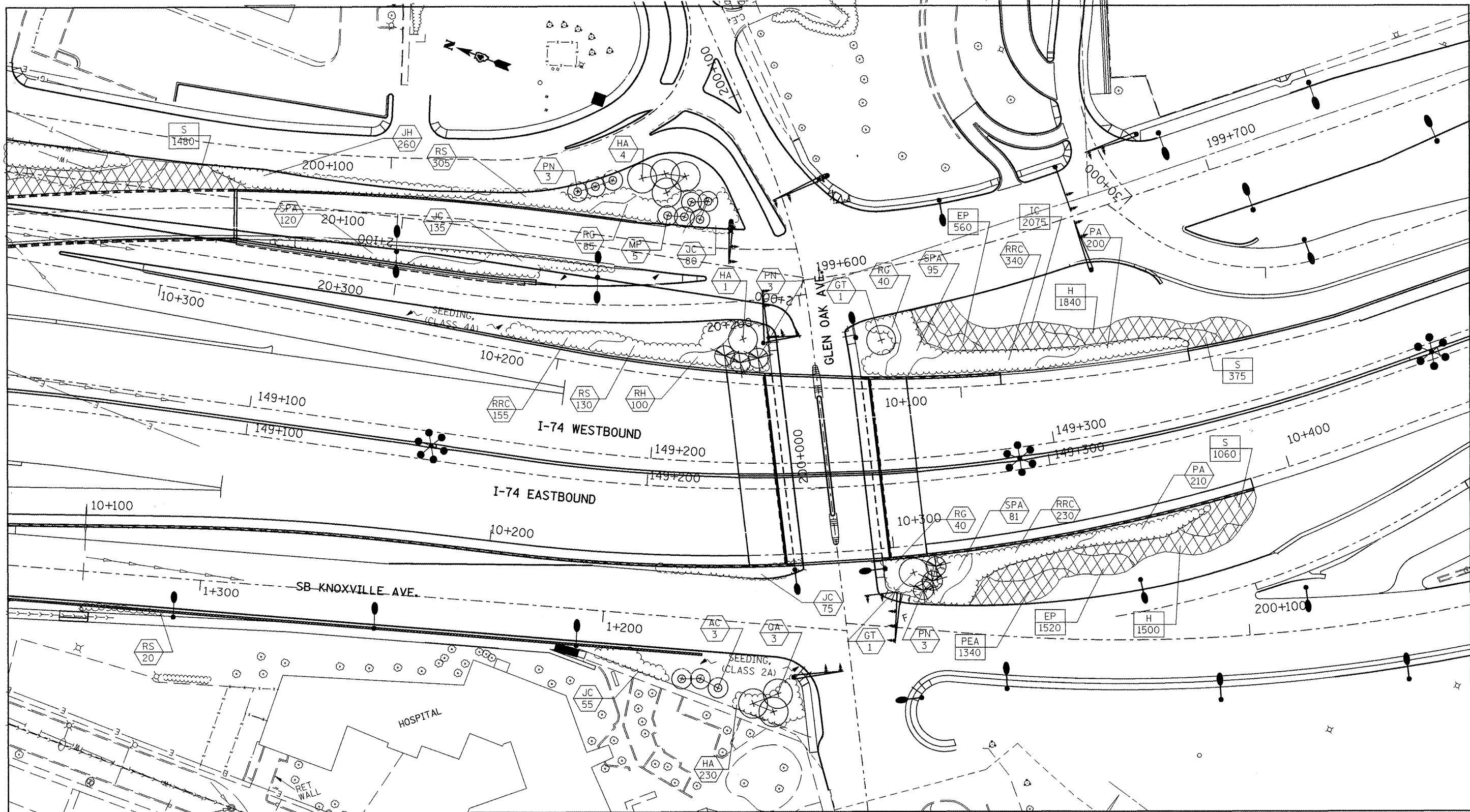
**STATE OF ILLINOIS  
 DEPARTMENT OF TRANSPORTATION**

**PLAN SHEET  
 LAYOUT 2**

SCALE: SHEET NO. OF SHEETS STA. TO STA.

F.A.I. RTE.	SECTION	COUNTY	TOTAL SHEETS	SHEET NO.
74	72(7,8,9-1)LS-3	PEORIA	12	8
CONTRACT NO. 68A60				
ILLINOIS FED. AID PROJECT				





**LEGEND**

- VINES ON SOUND/RETAINING WALL
- SHRUBS
- EVERGREEN TREE
- SMALL ORNAMENTAL TREE
- SHADE TREE (5' DIA. MULCH SAUCER-TYP. -FOR ALL TREES & SHRUBS)
- PERENNIAL PLANTS, WILDFLOWERS
- PERENNIAL PLANTS, FOR SUN
- PERENNIAL PLANTS KEY QUANTITY OF SPECIFIED PLANT
- PLANT KEY QUANTITY OF SPECIFIED PLANT

FILE NAME = 174 LANDSCAPE LAYOUT.dgn

USER NAME = eschhornbr  
 PLOT SCALE = 24.1896' / in.  
 PLOT DATE = 10/27/2011

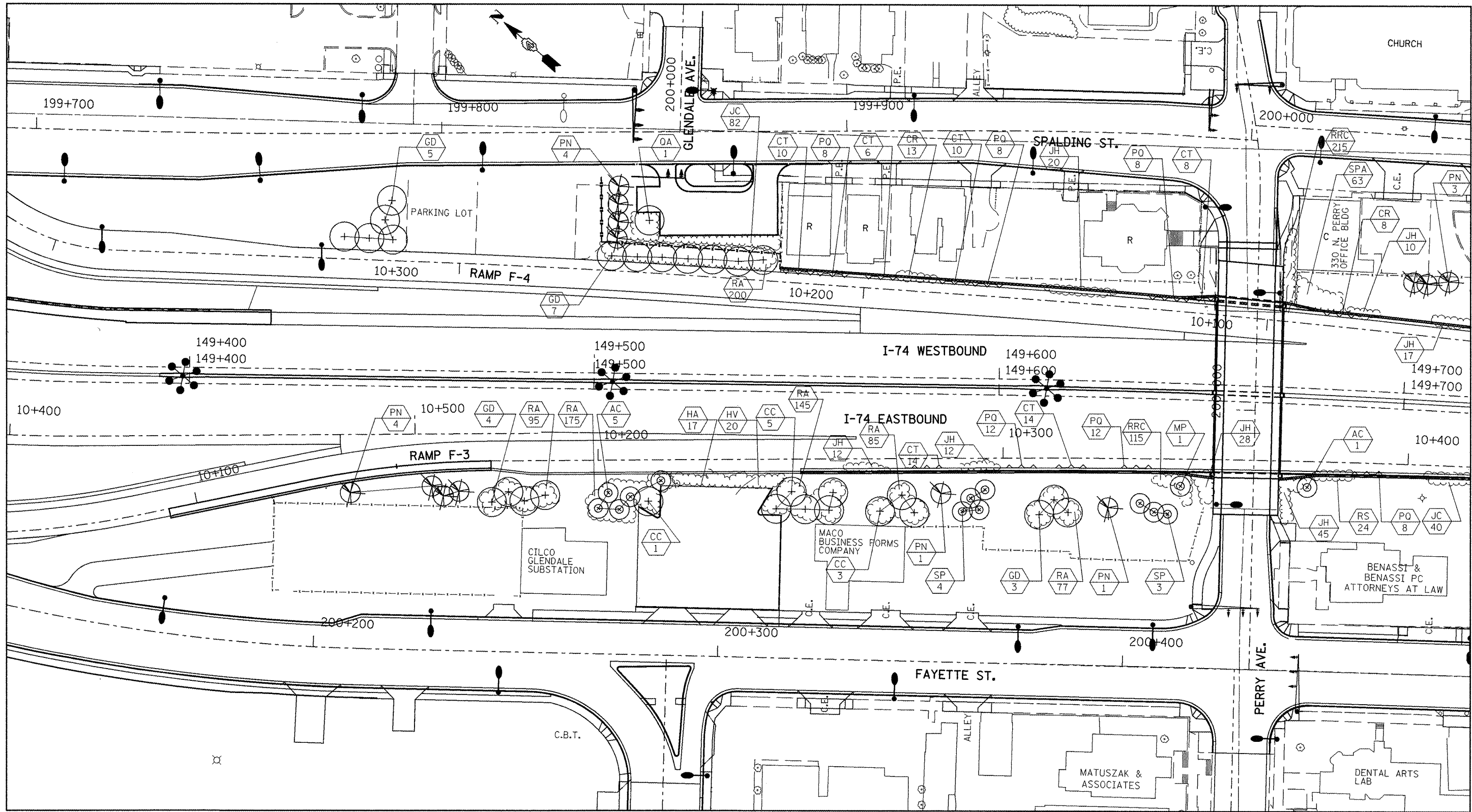
DESIGNED -	REVISED -
DRAWN -	REVISED -
CHECKED -	REVISED -
DATE -	REVISED -

**STATE OF ILLINOIS  
 DEPARTMENT OF TRANSPORTATION**

**PLAN SHEET  
 LAYOUT 3**

SCALE: SHEET NO. OF SHEETS STA. TO STA.

F.A.I. RTE.	SECTION	COUNTY	TOTAL SHEETS	SHEET NO.
74	72(7,8,9,9-DLS-3	PEORIA	12	9
CONTRACT NO. 68A60				
ILLINOIS FED. AID PROJECT				



**LEGEND**

- VINES ON SOUND/RETAINING WALL
- SHRUBS
- EVERGREEN TREE
- SMALL ORNAMENTAL TREE
- SHADE TREE (5' DIA. MULCH SAUCER-TYP. -FOR ALL TREES & SHRUBS)
- PERENNIAL PLANTS, WILDFLOWERS
- PERENNIAL PLANTS, FOR SUN
- PERENNIAL PLANTS KEY QUANTITY OF SPECIFIED PLANT
- PLANT KEY QUANTITY OF SPECIFIED PLANT

FILE NAME = I74 LANDSCAPE LAYOUT.dgn

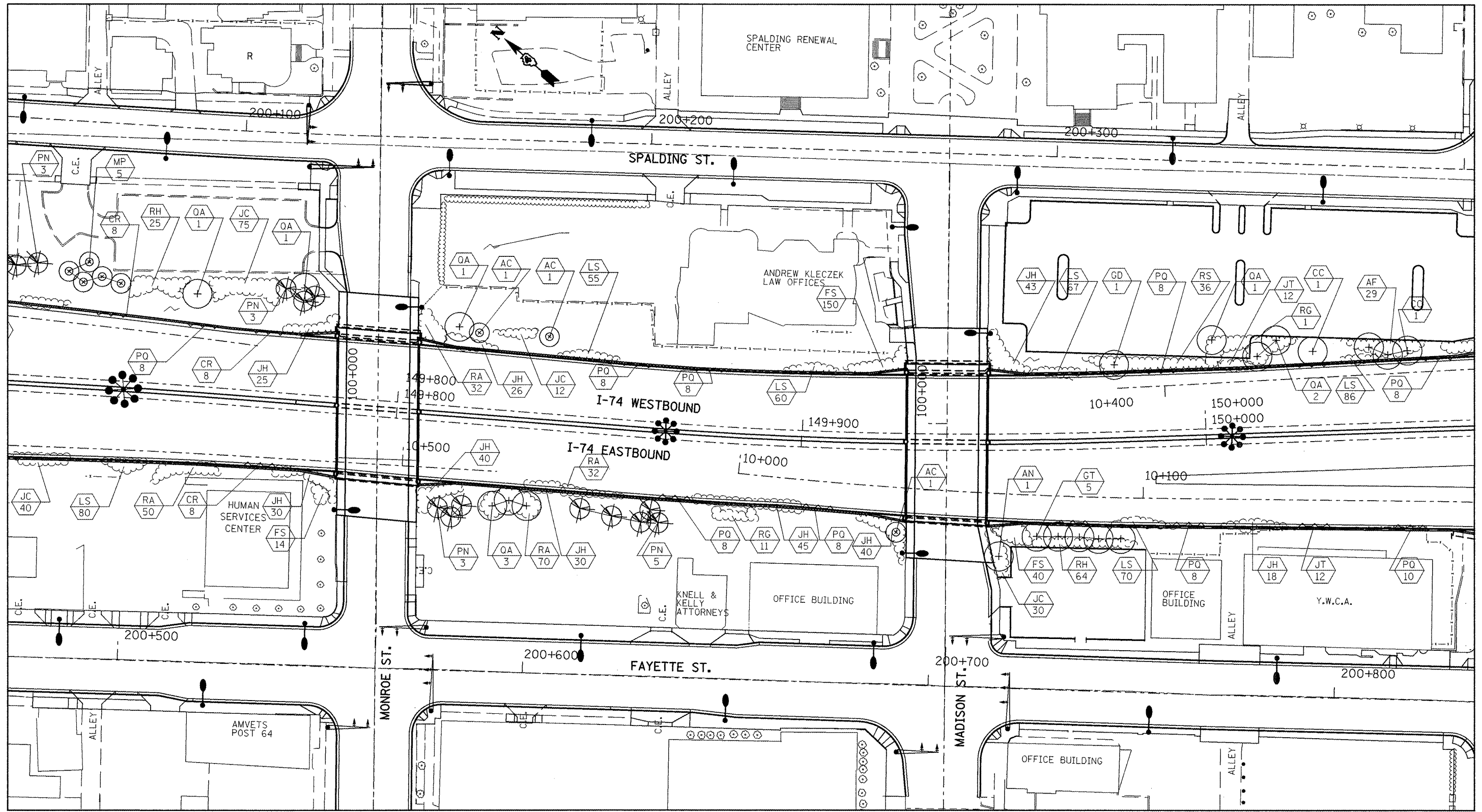
USER NAME = eschhornbr	DESIGNED -	REVISED -
PLOT SCALE = 24.1896' / 1" =	DRAWN -	REVISED -
PLOT DATE = 10/27/2011	CHECKED -	REVISED -
	DATE -	REVISED -

**STATE OF ILLINOIS  
DEPARTMENT OF TRANSPORTATION**

**PLAN SHEET  
LAYOUT 4**

SCALE: SHEET NO. OF SHEETS STA. TO STA.

F.A.I. RTE.	SECTION	COUNTY	TOTAL SHEETS	SHEET NO.
74	72(7,8,9,9-1)LS-3	PEORIA	12	10
CONTRACT NO. 68A60				
ILLINOIS FED. AID PROJECT				



**LEGEND**

VINES ON SOUND/ RETAINING WALL	SHADE TREE (5' DIA. MULCH SAUCER-TYP. -FOR ALL TREES & SHRUBS)	PERENNIAL PLANTS KEY 1750 QUANTITY OF SPECIFIED PLANT
SHRUBS	PERENNIAL PLANTS, WILDFLOWERS	PLANT KEY 250 QUANTITY OF SPECIFIED PLANT
EVERGREEN TREE	PERENNIAL PLANTS, FOR SUN	
SMALL ORNAMENTAL TREE		

FILE NAME =  
I74 LANDSCAPE LAYOUT.dgn

USER NAME = eschhornbr  
PLOT SCALE = 24.1896' / 1" =  
PLOT DATE = 10/27/2011

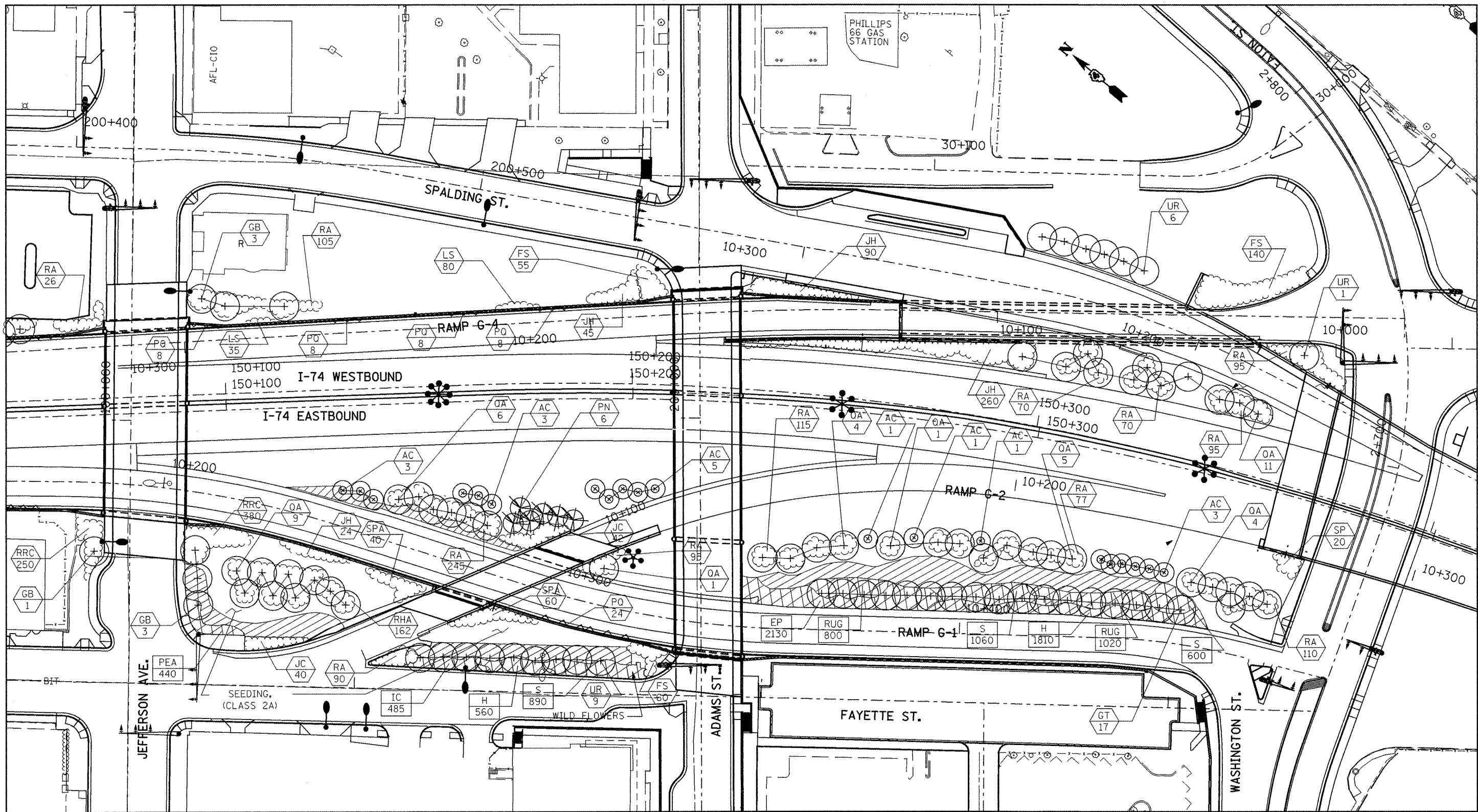
DESIGNED -	REVISED -
DRAWN -	REVISED -
CHECKED -	REVISED -
DATE -	REVISED -

**STATE OF ILLINOIS  
DEPARTMENT OF TRANSPORTATION**

**PLAN SHEET  
LAYOUT 5**

SCALE: SHEET NO. OF SHEETS STA. TO STA.

F.A.I. RTE. 74	SECTION 72(7,8,9,9-1)LS-3	COUNTY PEORIA	TOTAL SHEETS 12	SHEET NO. 11
CONTRACT NO. 68A60				
ILLINOIS FED. AID PROJECT				



**LEGEND**

- VINES ON SOUND/RETAINING WALL
- SHRUBS
- EVERGREEN TREE
- SMALL ORNAMENTAL TREE
- SHADE TREE (5' DIA. MULCH SAUCER-TYP. -FOR ALL TREES & SHRUBS)
- PERENNIAL PLANTS, WILDFLOWERS
- PERENNIAL PLANTS, FOR SUN
- PERENNIAL PLANTS KEY QUANTITY OF SPECIFIED PLANT
- PLANT KEY QUANTITY OF SPECIFIED PLANT

FILE NAME = 174 LANDSCAPE LAYOUT.dgn

USER NAME = eschornbr  
 PLOT SCALE = 24.1896' / 1" = 1/4"  
 PLOT DATE = 10/27/2011

DESIGNED -  
 DRAWN -  
 CHECKED -  
 DATE -

REVISED -  
 REVISED -  
 REVISED -  
 REVISED -

**STATE OF ILLINOIS  
 DEPARTMENT OF TRANSPORTATION**

**PLAN SHEET  
 LAYOUT 6**

SCALE: SHEET NO. OF SHEETS STA. TO STA.

F.A.I. RTE.	SECTION	COUNTY	TOTAL SHEETS	SHEET NO.
74	72(7,8,9,9-1)LS-3	PEORIA	12	12
CONTRACT NO. 68A60				
ILLINOIS FED. AID PROJECT				