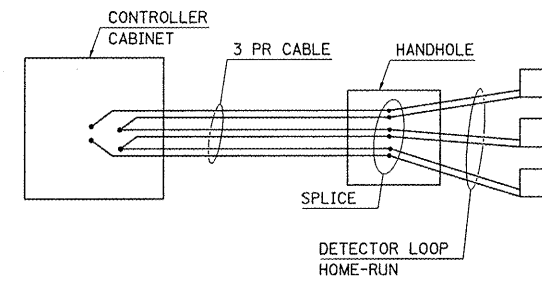
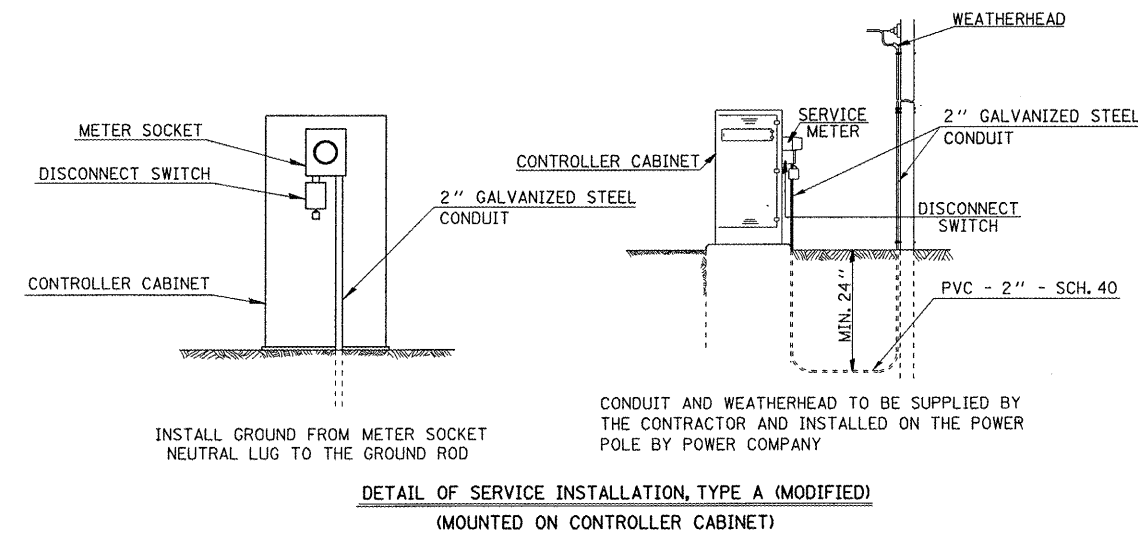
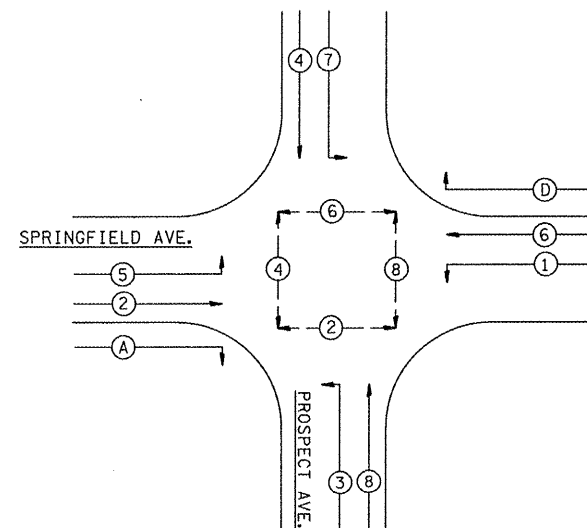


DETAIL OF DETECTOR LOOP WIRING
WIRED IN SERIES WITH MULTI-PAIR CABLE



PHASE DESIGNATION DIAGRAM



DETECTOR LOOP DATA

Loop	Size	Turns	Mode	Delay / Ext.	Loop Output	Veh. Phase
A1-2	6' x 6'	4	PRESENCE		VD 7	7
A3	6' x 6'	4	PRESENCE		PD 7	7
A4	6' x 6'	4	PRESENCE		SD 3	4
A5	6' x 6'	4	PRESENCE	10 /	SD 4	4
A6-7	6' x 6'	5	PRESENCE	/ 5	VD 4	4
B1-2	6' x 6'	4	PRESENCE		VD 3	3
B3	6' x 6'	4	PRESENCE		PD 3	3
B4	6' x 6'	4	PRESENCE		SD 7	8
B5	6' x 6'	4	PRESENCE	10 /	SD 8	8
B6-7	6' x 6'	5	PRESENCE	/ 5	VD 8	8
C1-2	6' x 6'	5	PRESENCE		VD 5	5
C3	6' x 6'	5	PRESENCE		PD 5	5
C4	6' x 6'	5	PRESENCE		SD 1	2
C5	6' x 6'	5	PRESENCE	10 /	SD 2	2
C6-7	6' x 6'	6	PRESENCE	/ 5	VD 2	2
D1-2	6' x 6'	3	PRESENCE		VD 1	1
D3	6' x 6'	3	PRESENCE		PD 1	1
D4	6' x 6'	3	PRESENCE		SD 5	6
D5	6' x 6'	3	PRESENCE	10 /	SD 6	6
D6	6' x 10'	4	PRESENCE	/ 5	VD 6	6

LOOPS SHALL BE WIRED TO COMMON AMPLIFIERS AS LISTED ABOVE.

THE FOLLOWING LOOP SHALL SERVE AS TRAFFIC COUNT LOOPS:
A3, A4, A5, B3, B4, B5, C3, C4, C5, D3, D4, D5

20 AMPLIFIERS TOTAL REQUIRED

ITEMS TO BE RETURNED TO THE CITY OF CHAMPAIGN

- ALL TRAFFIC SIGNAL HEADS
- ALL PEDESTRIAN SIGNAL HEADS
- CONTROLLER CABINET AND ALL PERIPHERAL EQUIPMENT
- CONTROLLER
- GPS EMERGENCY VEHICLE PRIORITY EQUIPMENT
- UNINTERRUPTABLE POWER SUPPLY

GENERAL NOTES

1. THE ACTUAL LOCATION OF ALL SIGNAL FOUNDATIONS, HANDHOLES, AND TRAFFIC CONTROLLER WILL BE DETERMINED IN THE FIELD BY THE ENGINEER.
2. POST MOUNTED SIGNALS SHALL BE INSTALLED SO THAT NO PART OF THE SIGNAL HEAD IS WITHIN 2 FT. OF THE FACE OF CURB.
3. ALL MAST ARM POLES SHALL BE A MINIMUM OF 6 FT. FROM THE CENTER OF THE POLE TO THE FACE OF CURB (ON THE MAST ARM SIDE) OR AS SHOWN ON THE PLANS.
4. ALL MAST ARM MOUNTED SIGNAL INDICATIONS SHALL BE MOUNTED OVER THE MIDDLE OF THE RESPECTIVE LANE. AS LOOKING ALONG THE CENTERLINE OF EACH STREET, A MINIMUM 2 FT. HORIZONTAL SEPARATION SHALL BE PLACED BETWEEN THE OUTSIDE SIGNAL HEADS OF EACH OPPOSING MASTARM TO PREVENT MASKING.
5. ALIGN ADJACENT RED INDICATIONS TO SAME HEIGHT ABOVE PAVEMENT.
6. THE BASE FOR A TRAFFIC SIGNAL POST SHALL BE SITUATED SUCH THAT THE HANDHOLE IS LOCATED ON A SIDE AWAY FROM A TRAVELED LANE.
7. THE ANTI-BACKUP FEATURE SHALL BE HARDWIRED ON THE BACKPANEL OF THE CONTROLLER CABINET.
8. THE TRAFFIC SIGNAL INSTRUCTION SIGN APPLICABLE TO PEDESTRIANS SHALL BE NATIONAL MUTCD 10-3. THE SIGN SHALL BE MOUNTED DIRECTLY OVER THE APPROPRIATE PEDESTRIAN PUSH-BUTTON.

FILE NAME =	USER NAME = biggsrd	DESIGNED -	REVISED -
c:\pwwork\pwwork\biggsrd\d0277321\0570	38-Design.dgn	DRAWN -	REVISED -
	PLOT SCALE = 20.0000 1/1 in.	CHECKED -	REVISED -
	PLOT DATE = 11/17/2011	DATE -	REVISED -

STATE OF ILLINOIS
DEPARTMENT OF TRANSPORTATION

F.A.P. RTE.	SECTION	COUNTY	TOTAL SHEETS	SHEET NO.
804	32TS	CHAMPAIGN	11	11
SCALE: _____			CONTRACT NO. 70938	
SHEET _____ OF _____ SHEETS			ILLINOIS FED. AID PROJECT	