

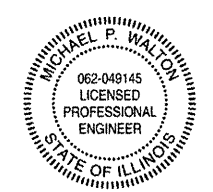
STATE OF ILLINOIS  
DEPARTMENT OF TRANSPORTATION  
DIVISION OF HIGHWAYS

**PROPOSED  
HIGHWAY PLANS**

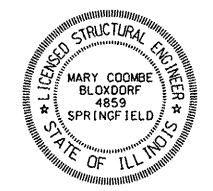
FAP ROUTE 614 (IL 78)  
SECTION 144 (B-4); 144 (B-5)  
PROJECT ACF-0614(032)  
CASS COUNTY  
C-96-011-08

CULVERT REPLACEMENT AND BRIDGE REPLACEMENT  
OVER PANTHER CREEK AND OVERFLOW, SW SIDE OF CHANDLERVILLE

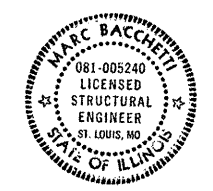
FOR INDEX OF SHEETS, SEE SHEET NO. 2



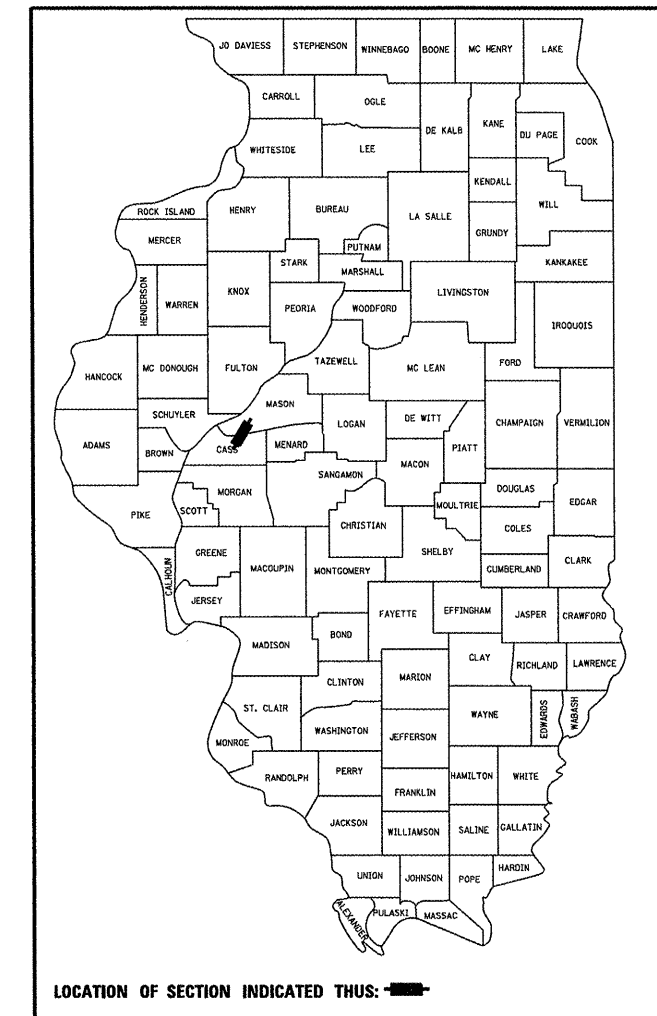
*Michael P. Walton* 08/26/11  
MICHAEL WALTON DATE  
LICENSE EXPIRES 11/30/2011  
SHEET RANGE 1-44, 74-97



*Mary Coombe Bloxdorf*  
MARY COOMBE BLOXDORF DATE 8-28-11  
LICENSE EXPIRES 11/30/2012  
SHEET RANGE 45-53

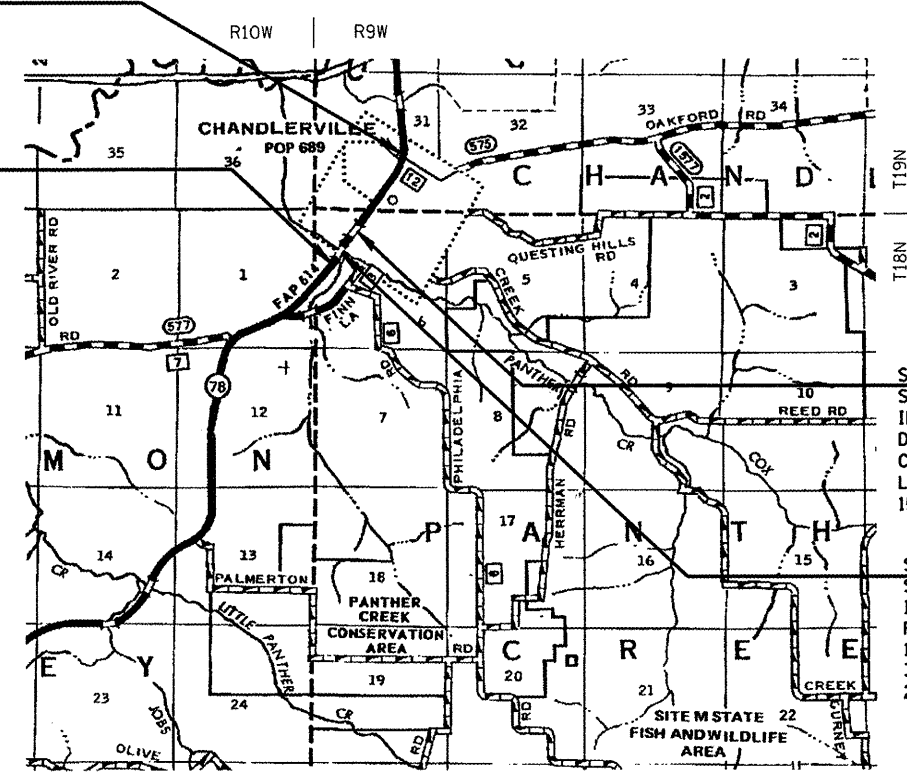


*Marc Bacchetti* F-26-11  
MARC BACCHETTI DATE  
LICENSE EXPIRES 11/30/2012  
SHEET RANGE 54-73



BEGIN CONSTRUCTION  
STA 953+00

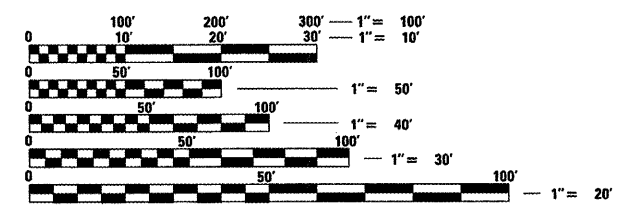
END CONSTRUCTION  
STA 1003+50



STA 992+03  
SN 009-2511  
IL 78 OVER PANTHER CREEK OVERFLOW  
DOUBLE 12' SPAN X 7' RISE  
CAST-IN-PLACE CONCRETE BOX CULVERT  
LENGTH = 86'-11 3/8" OUT-OUT;  
15° SKEW RT FWD

STA 997+40  
SN 009-0512  
IL 78 OVER PANTHER CREEK  
PR SINGLE-SPAN BRIDGE  
124'-8 5/8" BACK-BACK OF ABUTMENT;  
39'-2" OUT-OUT  
20° SKEW - RT FWD

AVERAGE DAILY TRAFFIC  
1,900 (2007)  
PV = 79.0% SU = 14.4% MU = 6.6%



FULL SIZE PLANS HAVE BEEN PREPARED USING STANDARD ENGINEERING SCALES. REDUCED SIZED PLANS WILL NOT CONFORM TO STANDARD SCALES. IN MAKING MEASUREMENTS ON REDUCED PLANS, THE ABOVE SCALES MAY BE USED.

J.U.L.I.E.  
JOINT UTILITY LOCATION INFORMATION FOR EXCAVATION  
1-800-892-0123  
OR 811

GROSS LENGTH: 5050.00 FEET = 0.956 MILES  
NET LENGTH: 5050.00 FEET = 0.956 MILES



SR. TEAM ENGINEER - JAY EDWARDS (217)785-5321  
TEAM ENGINEER - VINCE MADONIA (217)785-9046

CONTRACT NO. 72B55



STATE OF ILLINOIS  
DEPARTMENT OF TRANSPORTATION  
DIVISION OF HIGHWAYS

SUBMITTED *Sept 1* 20 *11*  
*Rosa Z. Parker*  
DEPUTY DIRECTOR OF HIGHWAYS, REGION ENGINEER

*December 9* 20 *11*  
*Scott E. Stitt, P.E.*  
Acting ENGINEER OF DESIGN AND ENVIRONMENT

*December 9* 20 *11*  
*William R. Freyer*  
DIRECTOR OF HIGHWAYS, CHIEF ENGINEER

PRINTED BY THE AUTHORITY  
OF THE STATE OF ILLINOIS