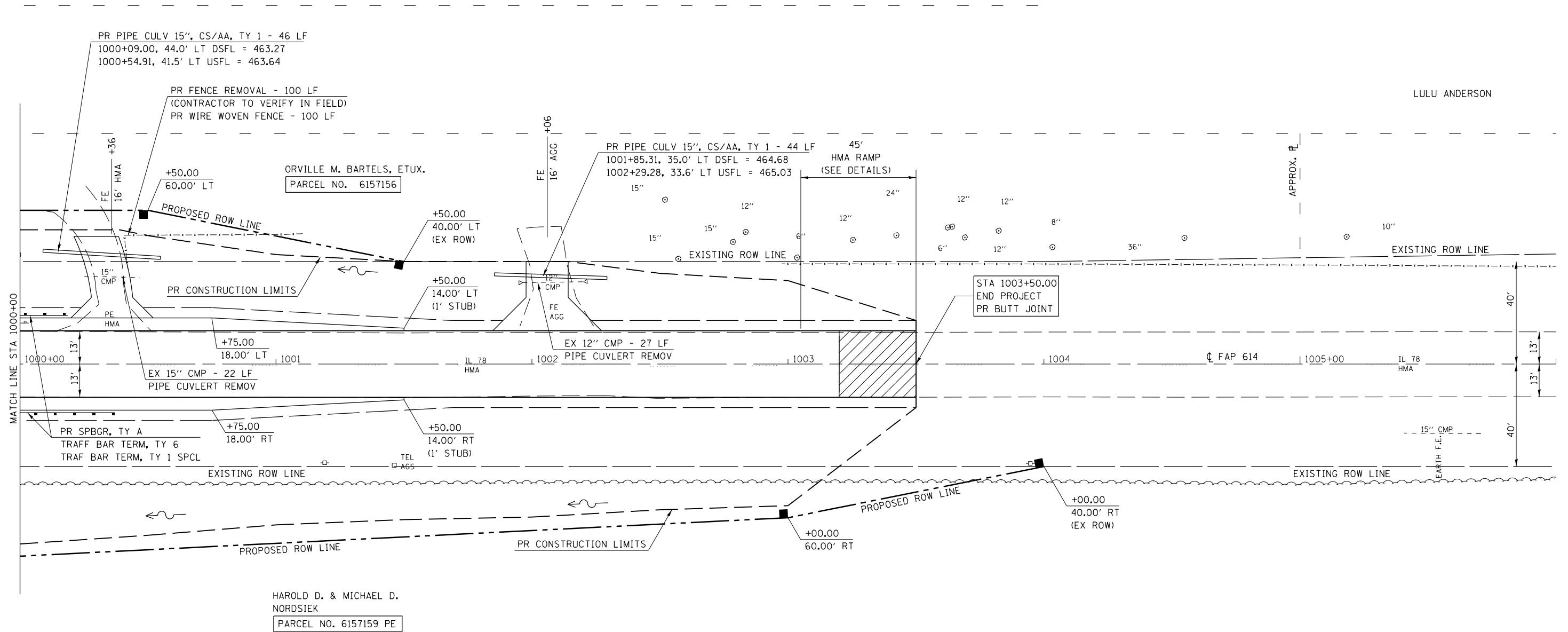




J.D. & J.M. BARTELS



USER NAME = sparksgw	DESIGNED - DRH	REVISED -
FILE NAME =	DRAWN - DRH	REVISED -
PLOT SCALE = 48.0000' / in.	CHECKED - VAM	REVISED -
PLOT DATE = Aug-31-2011 09:40:54AM	DATE - 8/26/2011	REVISED -

**STATE OF ILLINOIS  
DEPARTMENT OF TRANSPORTATION**

**PLAN - IL 78 OVER PANTHER CREEK OVERFLOW**

SCALE: 1"=20'    SHEET NO. 7 OF 8 SHEETS    STA. 1000+00 TO STA. 1006+00

F.A.P. RTE.	SECTION	COUNTY	TOTAL SHEETS	SHEET NO.
614	144 (B-4); 144 (B-5)	CASS	97	19
CONTRACT NO. 72B55				
FED. ROAD DIST. NO. ILLINOIS FED. AID PROJECT				