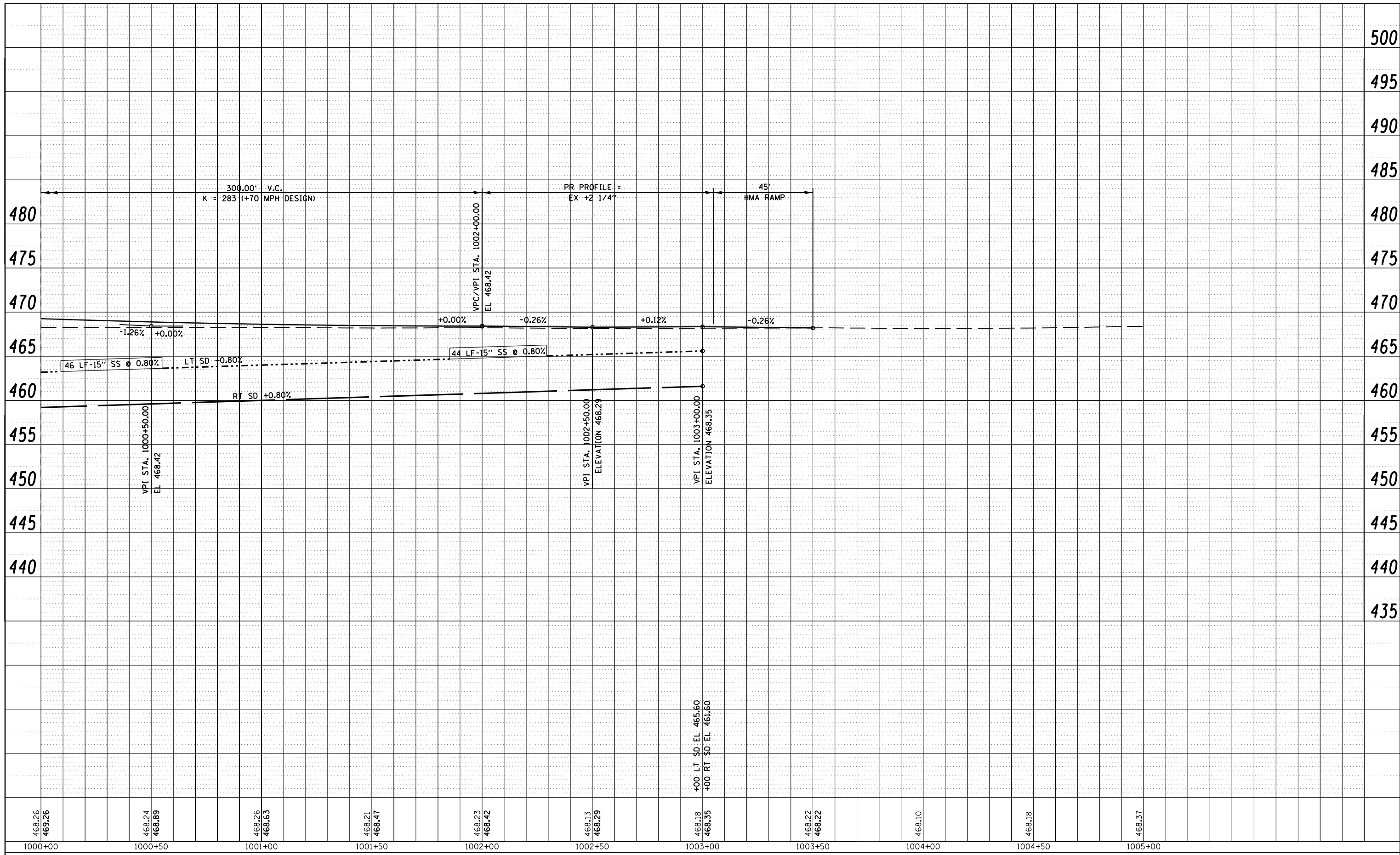


PLAN	SURVEYED	BY	DATE
	PLOTTED		
	GRADES CHECKED		
	STRUCTURE NOTATIONS CHECKED		
	NOTE BOOK NO.		
	CARD FILE NAME		

PROFILE	SURVEYED	BY	DATE
	PLOTTED		
	GRADES CHECKED		
	STRUCTURE NOTATIONS CHECKED		
	NOTE BOOK NO.		
	CARD FILE NAME		



468.26 469.26	468.24 468.89	468.26 468.63	468.21 468.47	468.23 468.42	468.13 468.29	468.18 468.35	468.22 468.22	468.10	468.18	468.37
1000+00	1000+50	1001+00	1001+50	1002+00	1002+50	1003+00	1003+50	1004+00	1004+50	1005+00



USER NAME = sparksgw	DESIGNED - DRH	REVISED -
FILE NAME =	DRAWN - DRH	REVISED -
PLOT SCALE = 48.0000' / 1"	CHECKED - VAM	REVISED -
PLOT DATE = Aug-31-2011 09:40:54AM	DATE - 8/26/2011	REVISED -

STATE OF ILLINOIS
DEPARTMENT OF TRANSPORTATION

PROFILE - IL 78 OVER PANTHER CREEK OVERFLOW
 SCALE: 1"=20', 1"=5' SHEET NO. 8 OF 8 SHEETS STA. 1000+00 TO STA. 1006+00

F.A.P. RTE.	SECTION	COUNTY	TOTAL SHEETS	SHEET NO.
614	144 (B-4); 144 (B-5)	CASS	97	20
CONTRACT NO. 72B55				
FED. ROAD DIST. NO. ILLINOIS FED. AID PROJECT				