

STATE OF ILLINOIS  
DEPARTMENT OF TRANSPORTATION

**GENERAL NOTES**

Fasteners shall be AASHTO M164 Type 1, mechanically galvanized bolts in painted areas and M164 Type 3 in unpainted areas. Bolts 3/4-in.  $\phi$ , holes 13/16-in.  $\phi$ , unless otherwise noted.

Calculated weight of Structural Steel = 232,833 pounds

All structural steel shall be AASHTO M 270 Grade 50W. All structural steel shall be cleaned as specified in Article 506 of the standard specifications.

No field welding is permitted except as specified in the contract documents.

Reinforcement bars designated (E) shall be epoxy coated.

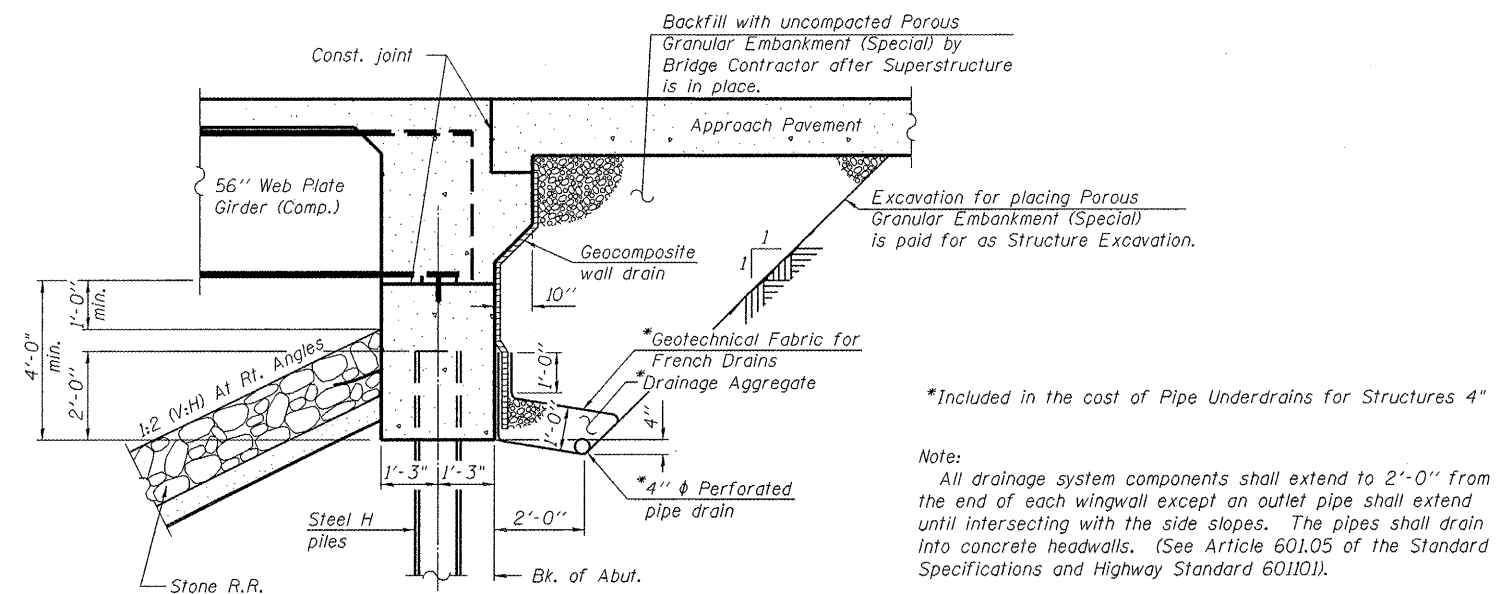
Structural steel shall only be painted for a distance equal to the depth of embedment into the concrete cap plus 3 inches. Painted areas shall be primed in the shop with a Department approved zinc rich primer. Field painting will not be required.

Layout of slope protection system may be varied to suit ground conditions in the field as directed by the Engineer.

Slipforming of parapets is not allowed.

**TOTAL BILL OF MATERIALS**

ITEM	UNIT	SUPER	SUB	TOTAL
POROUS GRANULAR EMBANKMENT, SPECIAL	CU. YD.		489	489
STONE RIPRAP, CLASS A4	SQ. YD.		2190	2190
FILTER FABRIC	SQ. YD.		2190	2190
REMOVAL OF EXISTING STRUCTURES NO.2	EACH			1
STRUCTURE EXCAVATION	CU. YD.		124	124
CONCRETE STRUCTURES	CU. YD.	21.6	48	69.6
CONCRETE SUPERSTRUCTURE	CU. YD.	298.6		298.6
BRIDGE DECK GROOVING	SQ. YD.	805		805
CONCRETE ENCASEMENT	CU. YD.		5.6	5.6
PROTECTIVE COAT	SQ. YD.	932		932
FURNISHING AND ERECTING STRUCTURAL STEEL	L. SUM			1
STUD SHEAR CONNECTORS	EACH	3312		3312
REINFORCEMENT BARS, EPOXY COATED	POUND	69022	16364	85386
BAR SPLICERS	EACH	681	108	789
FURNISHING STEEL PILES HP12x63	FOOT		700	700
DRIVING PILES	FOOT		700	700
TEST PILE STEEL HP 12x63	EACH		2	2
NAME PLATES	EACH	1		1
GEOCOMPOSITE WALL DRAIN	SQ. YD.		120	120
PIPE UNDERDRAINS FOR STRUCTURES 4"	FOOT		125	125
TEMPORARY SOIL RETENTION SYSTEM	SQ. FT.		1200	1200
ANCHOR BOLTS, 1"	EACH		24	24
ASBESTOS BEARING PAD REMOVAL	EACH			44



**SECTION THRU INTEGRAL ABUTMENT**  
HORIZONTAL DIMENSION @ RIGHT ANGLES

	USER NAME =	DESIGNED - JR	REVISED -	STATE OF ILLINOIS DEPARTMENT OF TRANSPORTATION	GENERAL NOTES & BILL OF MATERIALS STRUCTURE No. 009-0512	F.A.P. RTE. =	SECTION	COUNTY	TOTAL SHEETS	SHEET NO.
	PLOT SCALE =	CHECKED - JEK	REVISED -			614	144(B-5)	CASS	97	55
PLOT DATE =	DRAWN - WJG	REVISED -				CONTRACT NO. 72B55		ILLINOIS FED. AID PROJECT		
	CHECKED - JEK	REVISED -				SHEET NO. 2 OF 20 SHEETS				