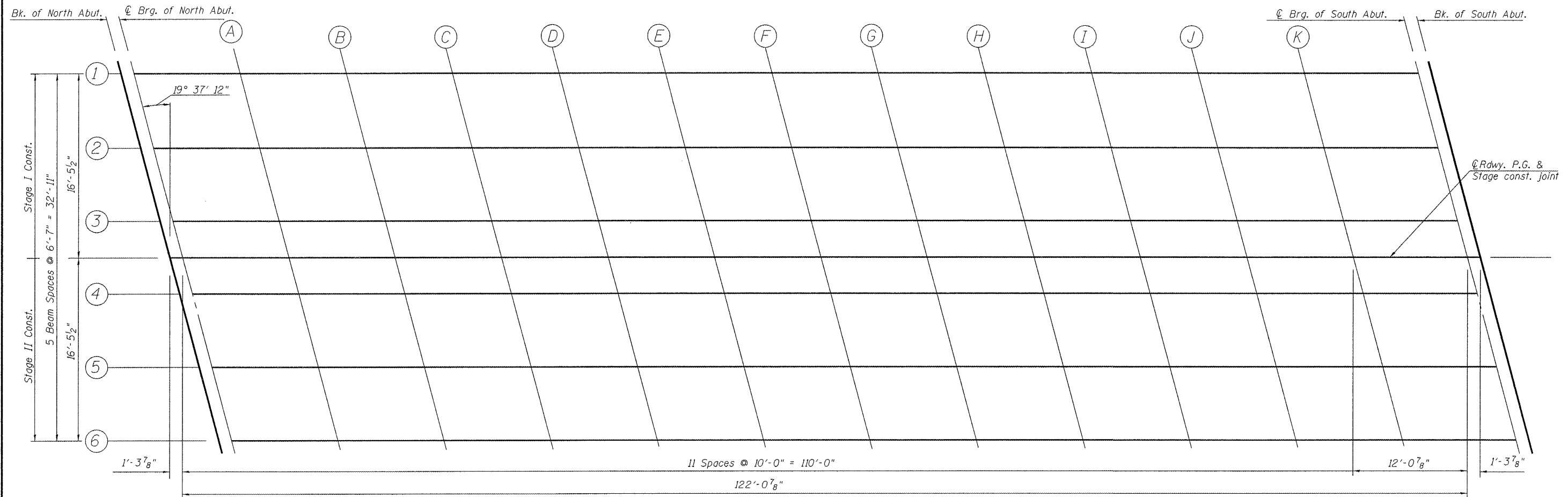
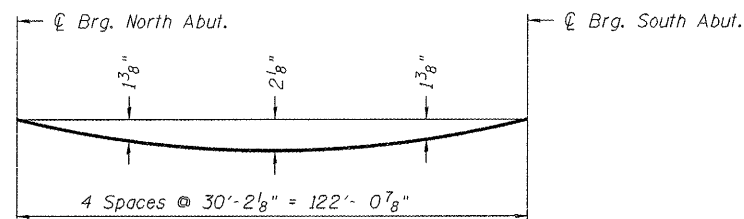


STATE OF ILLINOIS  
DEPARTMENT OF TRANSPORTATION

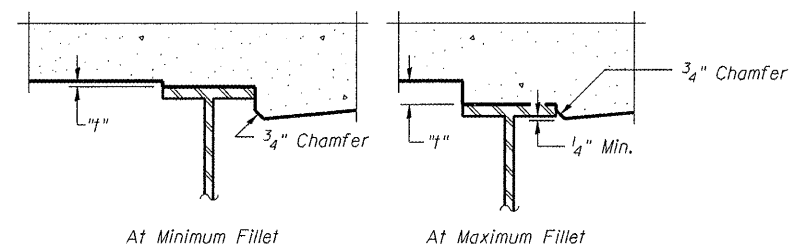


PLAN



DEAD LOAD DEFLECTION DIAGRAM

(Includes weight of concrete only.)  
Note:  
The above deflections are not to be used in the field if the engineer is working from the grade elevations adjusted for dead load deflections as shown on sheet 6 of 20.



To determine "t": After all structural steel has been erected, elevations of the top flanges of the beams shall be taken at intervals shown above. These elevations subtracted from the "Theoretical Grade Elevations Adjusted for Dead Load Deflection" shown on sheet 6 of 20, minus slab thickness, equals the fillet heights "t" above top flange of beams.

FILLET HEIGHTS

The VOLKERT/DMA  
Joint Venture

USER NAME =	DESIGNED - JR	REVISED -
PLOT SCALE =	CHECKED - JEK	REVISED -
PLOT DATE =	DRAWN - WJG	REVISED -
	CHECKED - JEK	REVISED -

STATE OF ILLINOIS  
DEPARTMENT OF TRANSPORTATION

TOP OF SLAB ELAVATIONS  
STRUCTURE NO. 009-0512

F.A.P. RTE. =	SECTION	COUNTY	TOTAL SHEETS	SHEET NO.
614	144(B-5)	CASS	97	58
CONTRACT NO. 72B55			ILLINOIS FED. AID PROJECT	

SHEET NO. 5 OF 20 SHEETS