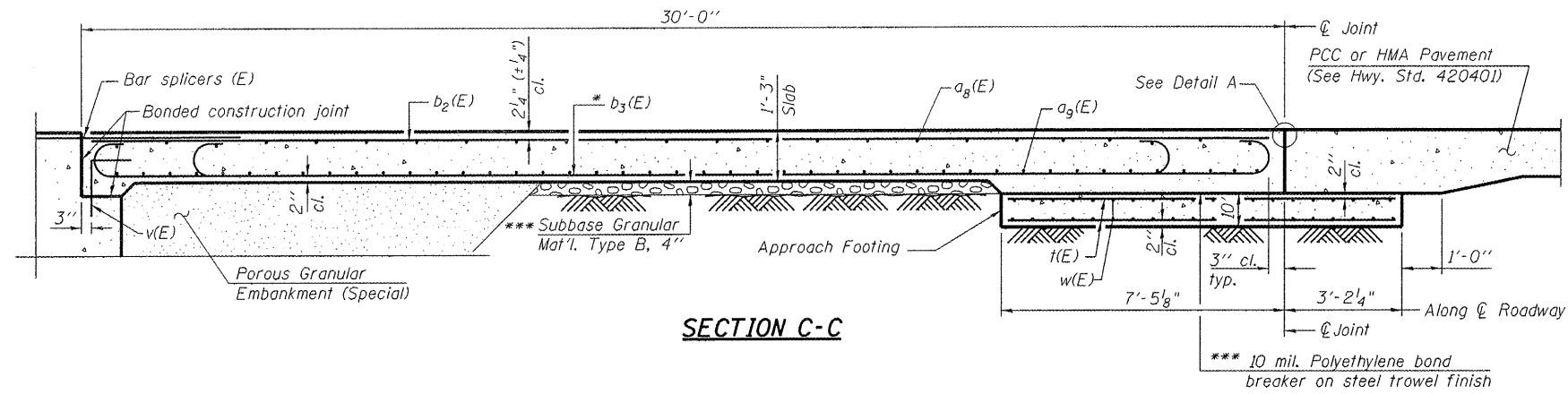


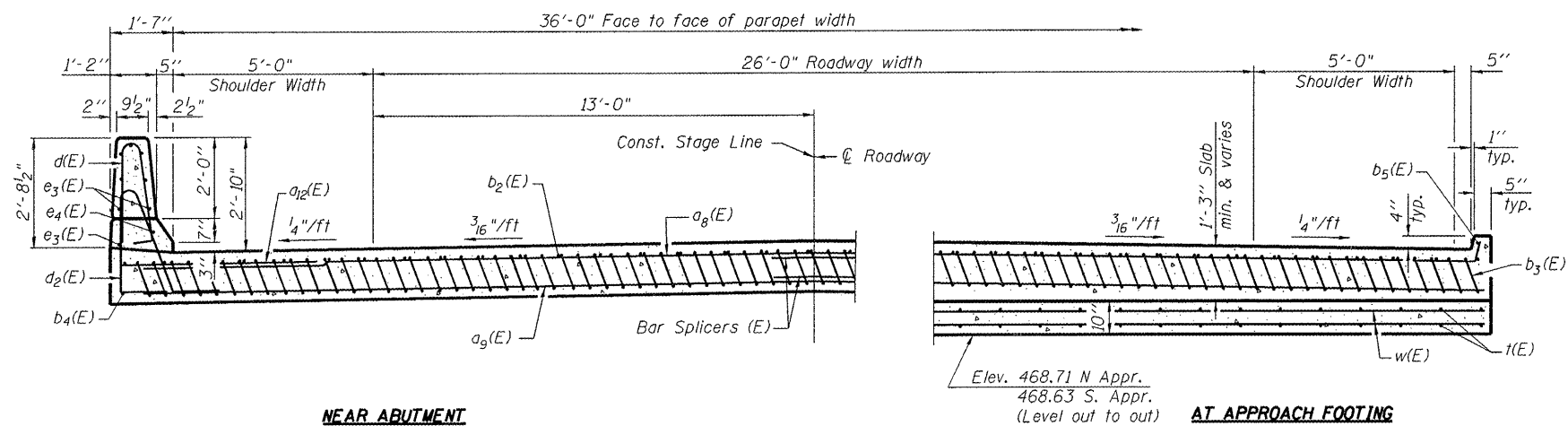
STATE OF ILLINOIS
DEPARTMENT OF TRANSPORTATION



SECTION C-C

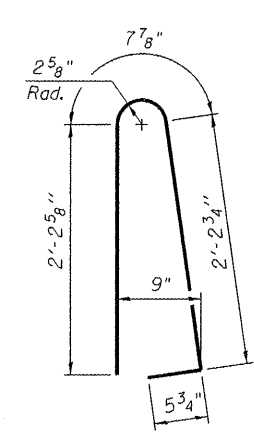
Notes:
See sheet 11 of 20 for Detail A and View B-B.
Approach slab and parapet concrete shall be paid for as Concrete Superstructure.
Approach footing concrete shall be paid for as Concrete Structures.
Reinforcement shall be paid for as Reinforcement Bars, Epoxy Coated.
For v(E) bar details, see sheet 10 of 20.
The approach footing maximum applied service bearing pressure (Qmax) = 2.0 ksf.
For bar splicer details, see sheet 19 of 20.
Cost of excavation for approach footing included with Concrete Structures.
For Porous Granular Embankment (Special) and drainage treatment details, see sheet 2 of 20.
For additional parapet details, see sheet 10 of 20.

* Tilt #9 b3(E) bars as required to maintain clearance.
*** Cost included with Concrete Superstructure.

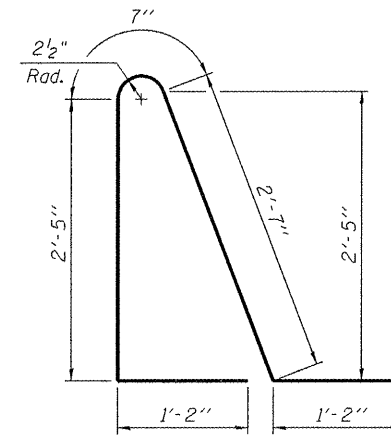


NEAR ABUTMENT

AT APPROACH FOOTING

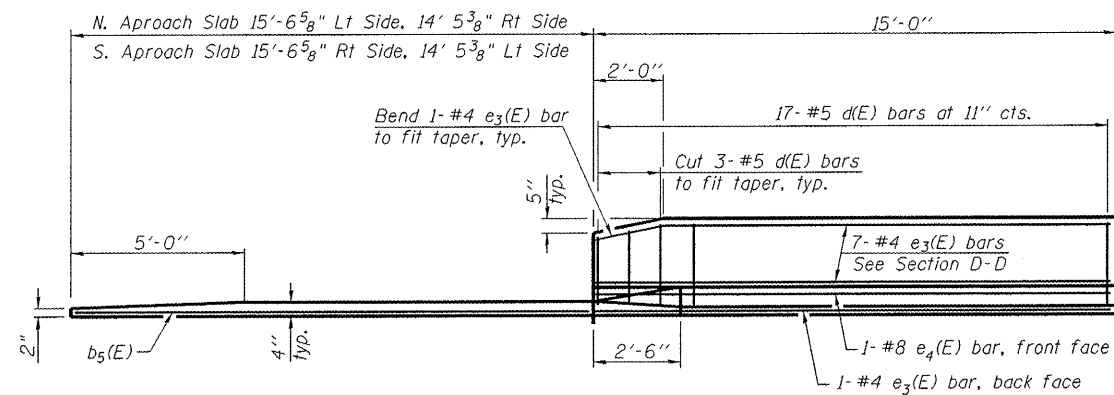


BAR d(E)

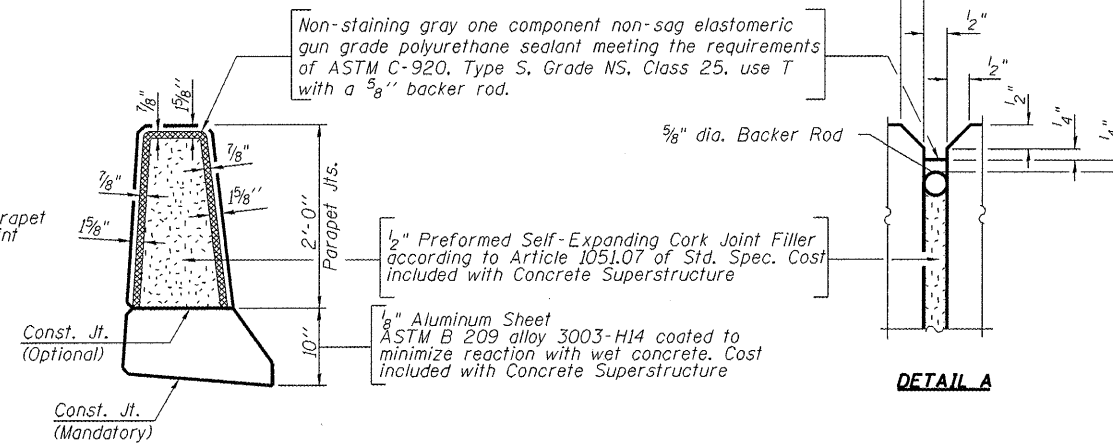


BAR d2(E)

SECTION D-D
(See Plan for dimensions not shown)



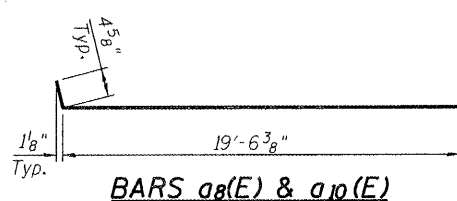
VIEW E-E



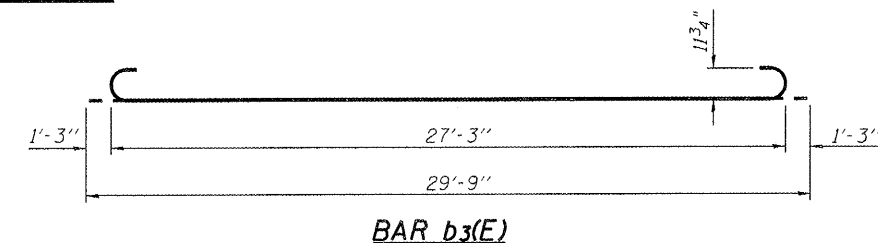
PARAPET JOINT DETAILS

TWO APPROACHES
BILL OF MATERIAL

Bar	No.	Size	Length	Shape
a8(E)	100	#4	19'-11"	—
a9(E)	184	#5	19'-9"	—
a2(E)	32	#6	6'-6"	—
b2(E)	66	#4	29'-8"	—
b3(E)	182	#9	29'-9"	—
b4(E)	4	#4	14'-8"	—
b5(E)	4	#4	14'-3"	—
d(E)	68	#5	5'-7"	—
d2(E)	68	#5	7'-11"	—
e3(E)	32	#4	14'-8"	—
e4(E)	4	#8	14'-8"	—
t(E)	156	#4	10'-0"	—
w(E)	160	#5	19'-9"	—
Concrete Superstructure		Cu. Yd.	113.6	
Concrete Structures		Cu. Yd.	21.6	
Reinforcement Bars, Epoxy Coated		Pound	30,993	



BARS a8(E) & a10(E)



BAR b3(E)

The VOLKERT/DMA
Joint Venture

USER NAME =
PLOT SCALE =
PLOT DATE =

DESIGNED - JR
CHECKED - JEK
DRAWN - WJG
CHECKED - JEK

REVISED -
REVISED -
REVISED -
REVISED -

STATE OF ILLINOIS
DEPARTMENT OF TRANSPORTATION

BRIDGE APPROACH SLAB DETAILS
STRUCTURE NO. 009-0512

SHEET NO. 12 OF 20 SHEETS

F.A.P. RTE.	SECTION	COUNTY	TOTAL SHEETS	SHEET NO.
614	144(B-5)	CASS	97	65
CONTRACT NO. 72B55				
ILLINOIS FED. AID PROJECT				