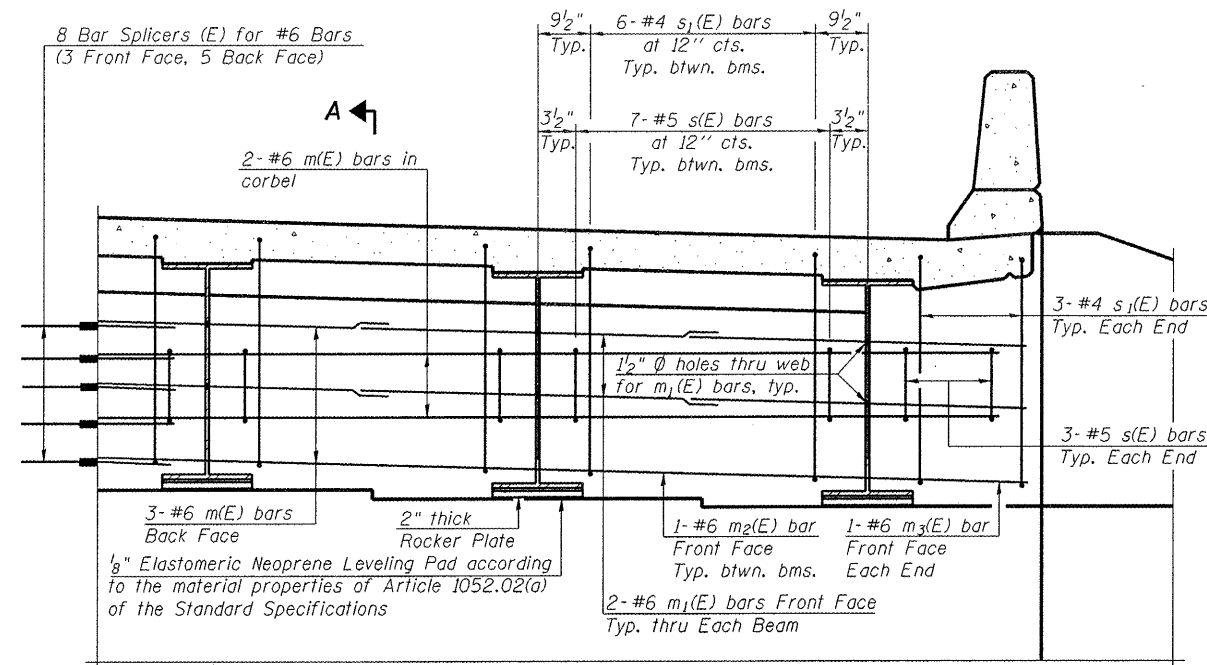


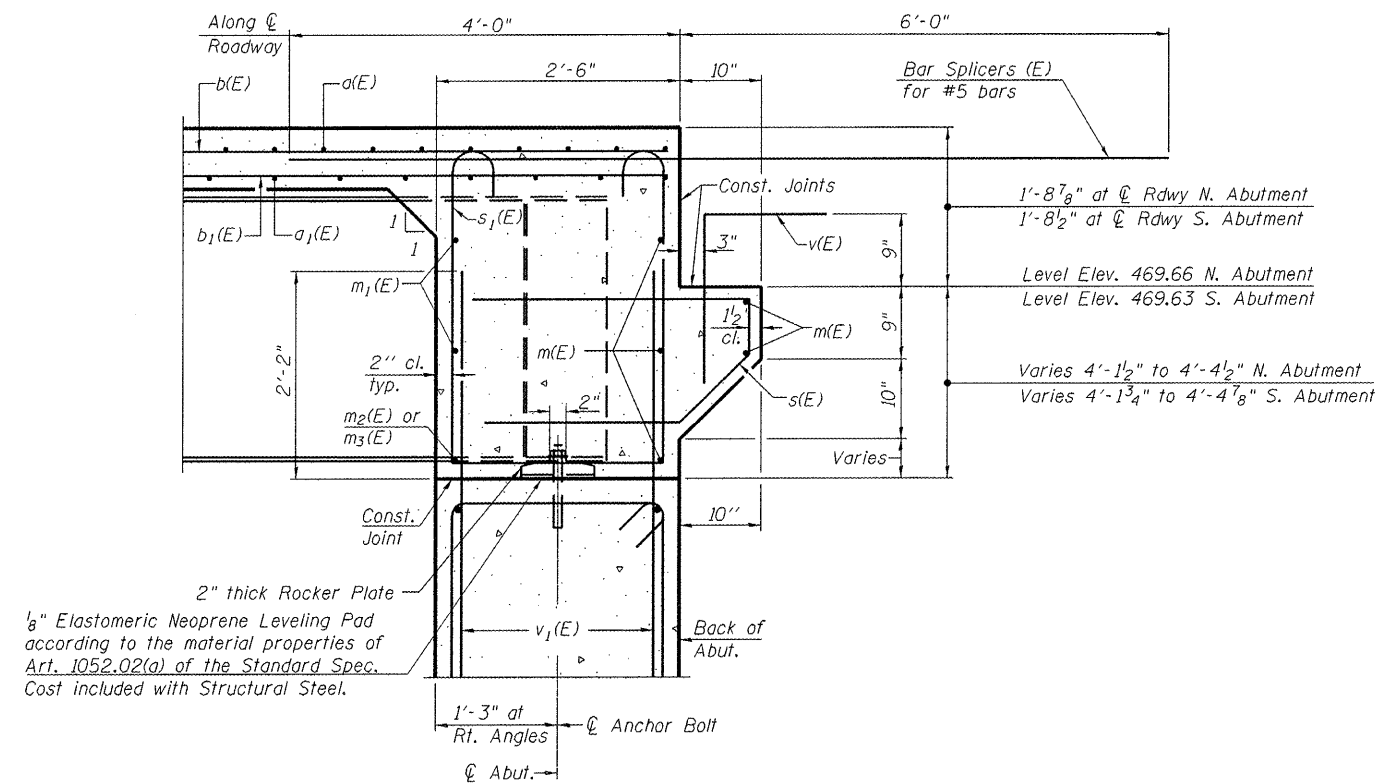
STATE OF ILLINOIS
DEPARTMENT OF TRANSPORTATION



DIAPHRAGM ELEVATION AT ABUTMENT

Notes:
Reinforcement bars in diaphragm are billed with superstructure on sheet 10 of 20.
Concrete in diaphragm is included with Concrete Superstructure on sheet 10 of 20.
For details of bars s(E) & s1(E) see sheet 10 of 20.
The s(E) and s1(E) bars shall be placed parallel to the beams. Spacing for these bars shall be at right angles to the beams.

MIN. BAR LAP
#6 bar = 3'-4"



SECTION A-A

Dimensions at right angles to abutment, except as shown.



USER NAME #	DESIGNED - JR	REVISED -
PLOT SCALE #	CHECKED - JEK	REVISED -
PLOT DATE #	DRAWN - WJC	REVISED -
	CHECKED - JEK	REVISED -

STATE OF ILLINOIS
DEPARTMENT OF TRANSPORTATION

DIAPHRAGM DETAILS
STRUCTURE NO. 009-0512

SHEET NO. 13 OF 20 SHEETS

F.A.P. RTE.	SECTION	COUNTY	TOTAL SHEETS	SHEET NO.
614	144(B-5)	CASS	97	66
CONTRACT NO. 72B55				

ILLINOIS FED. AID PROJECT