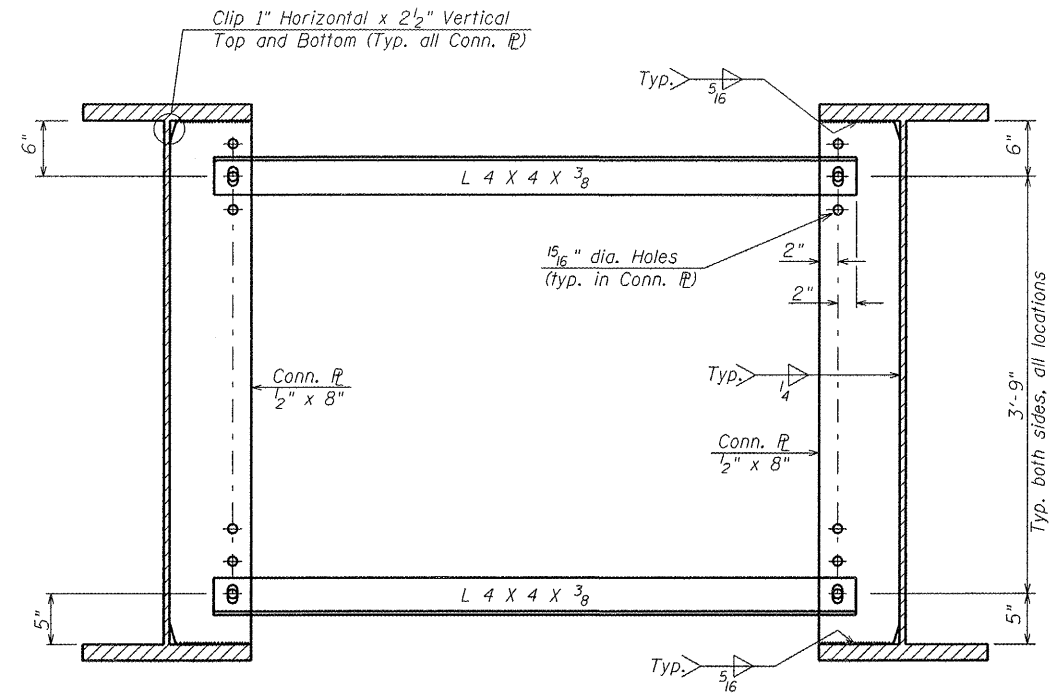


* Fillet weld angles 3 sides on one face of gusset plate.

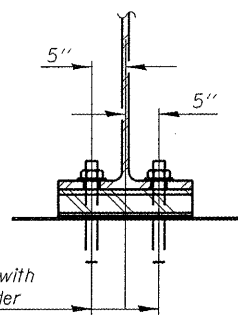
D1 INTERIOR CROSS FRAME

No. Required = 30

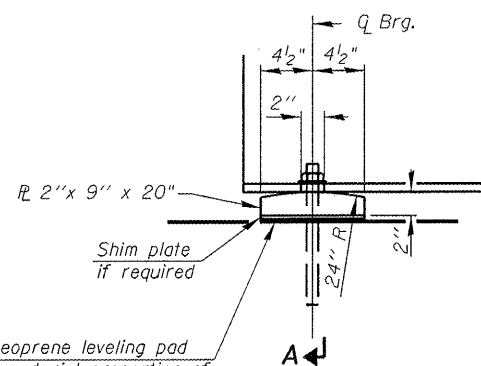


D2 TEMPORARY BRACE

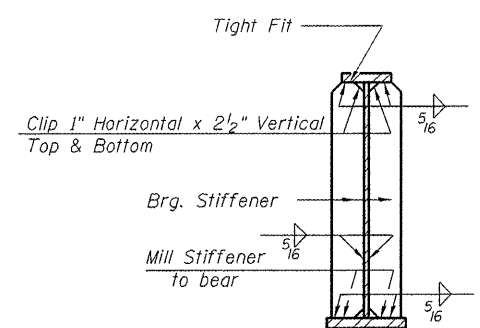
No. Required = 6



SECTION A-A



ELEVATION AT ABUTMENT



SECTION AT ABUTMENT-A

NOTES:

All connections to be made with 3/4" H.S. Bolts with 15/16" dia. holes. Two hardened washers required for each set of oversized holes.

All Cross Frame members shall be M270, Gr. 50W.

All cross frames shall be installed as steel is erected and secured with erection pins and bolts except as otherwise noted. Individual cross frames at supports may be temporarily disconnected to install bearing anchor rods.

For stage construction, the D2 Temporary Braces between Beams 3 and 4 shall be installed with one 1/8" dia. bolt at each end only finger tight and with slots positioned to allow maximum differential deflection during deck pour.

Temporary Brace angles shall have 15/16" x 2 3/4" vertical slotted holes at each end of angle.

After the differential displacements due to stage construction have been eliminated, temporary braces are replaced by permanent D1 Interior Cross Frames with standard oversized holes.

	USER NAME =	DESIGNED - JR	REVISED -	STATE OF ILLINOIS DEPARTMENT OF TRANSPORTATION	CROSS FRAME DETAILS STRUCTURE NO. 009-0512	F.A. RTE. =	SECTION	COUNTY	TOTAL SHEETS	SHEET NO.
	PLOT SCALE =	CHECKED - JEK	REVISED -			614	144(B-5)	CASS	97	68
	PLOT DATE =	DRAWN - WJG	REVISED -			CONTRACT NO. 72B55				
		CHECKED - JEK	REVISED -			ILLINOIS FED. AID PROJECT				
SHEET NO. 15 OF 20 SHEETS										