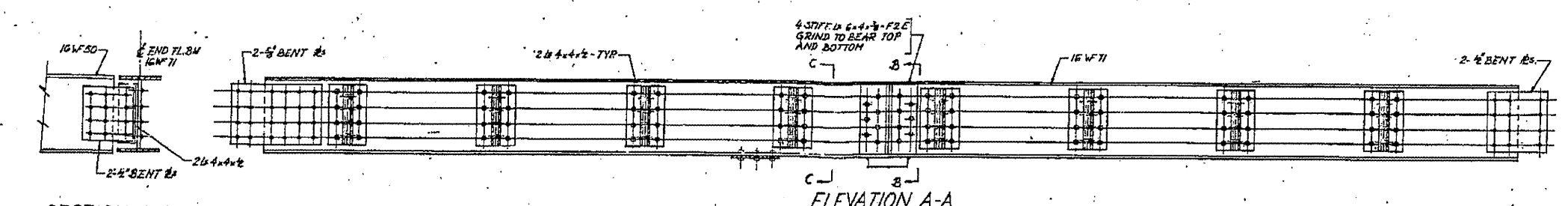


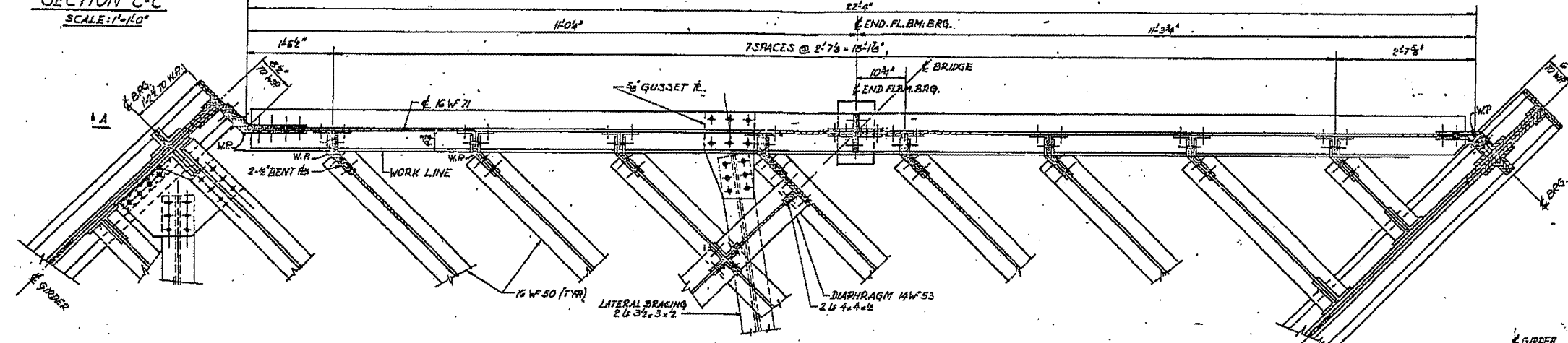
ROUTE NO.	SECTION	COUNTY	TOTAL SHEETS
F.A.S.	110X-75B	SANGAMON	25
STA.	TO STA.		10
E.P. & M. NO.	ILLINOIS	PROJECT	



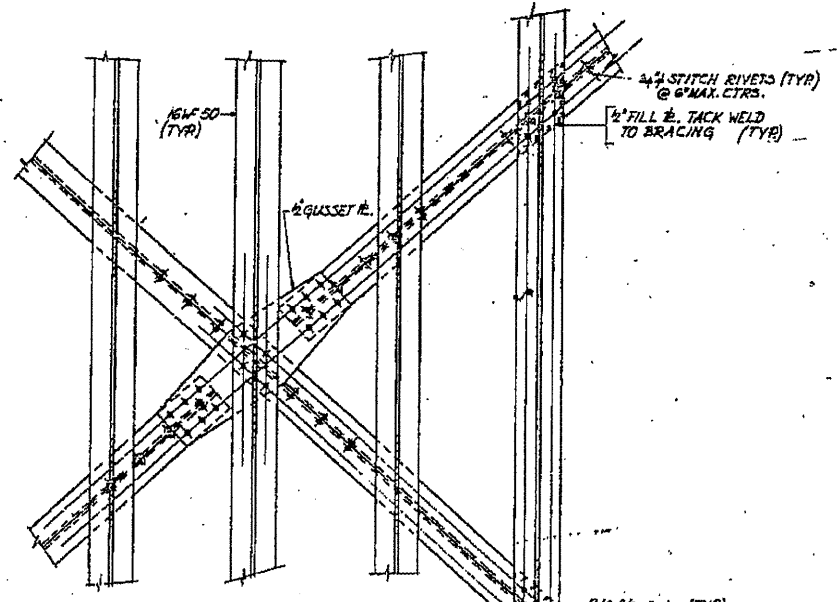
SECTION C-C
SCALE: 1"=10'

ELEVATION A-A

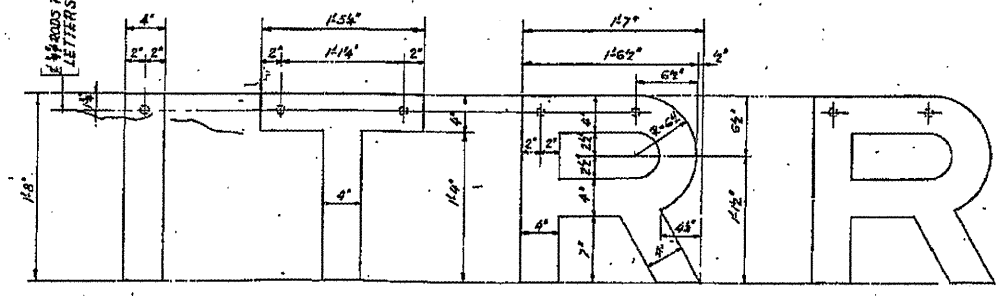
SECTION B-B
SCALE: 1"=10'



PLAN OF END FLOOR BEAM
SCALE: 1"=10'

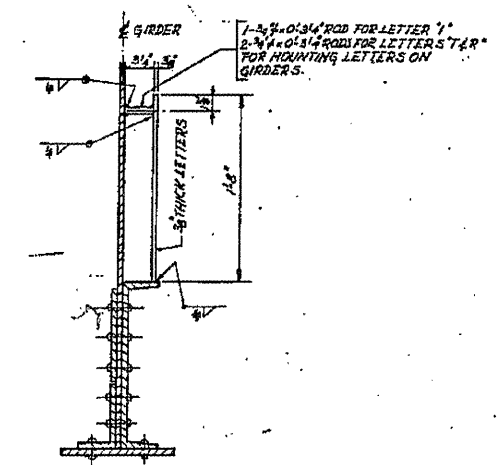


TYP. CONNECTIONS OF LATERAL BRACING TO FLOOR BEAMS.
SCALE: 1"=10'



DETAIL OF LETTERS
ONE SET TO BE MOUNTED ON EACH GIRDER
SCALE: 1/2"=10'

NOTE:
I.T.R.R. LETTERS TO BE CUT FROM 3/8" STRUCTURAL STEEL PLATES. LETTERS MAY BE FLAME CUT, BUT EDGES MUST BE GRIND TRUE, SMOOTH AND EVEN. LETTERS SHALL BE GIVEN ONE SHOP COAT OF PAINT, SAME AS STRUCTURAL STEEL AND TWO FIELD COATS OF BLACK AUTO ENAMEL. LETTERS AND RODS FOR MOUNTING ENBLEM ON GIRDERS SHALL BE INCLUDED IN THE CONTRACT UNIT PRICE FOR RAILROAD ENBLEMS.
FOR LOCATION OF LETTERS SEE SECT. A-A, SH. 3



SECTION THRU LETTER AT GIRDERS
SCALE: 1/2"=10'

END FLOOR BEAM UNDERPASS			
I.T.R.R.	BRIDGE No. F-71.5		
OVER SOUTH 5 TH STREET EXTENDED	SPRINGFIELD, ILLINOIS		
PROJECT UG 166(40)			
F.A. ROUTE 5	SECTION 110X-75B		
SANGAMON COUNTY		STATION 8+22.70	

ALFRED BENECH & ASSOCIATES
CONSULTING ENGINEERS
19 E. WASHINGTON AVE. CHICAGO, ILLINOIS

FILE NAME = #FILE#	USER NAME = #USER#	DESIGNED -	REVISED -
		DRAWN -	REVISED -
		CHECKED -	REVISED -
		DATE -	REVISED -

STATE OF ILLINOIS
DEPARTMENT OF TRANSPORTATION

084-0033 (FOR INFORMATION ONLY)

SCALE: _____ SHEET NO. _____ OF _____ SHEETS STA. _____ TO STA. _____

F.A.P. RTE.	SECTION	COUNTY	TOTAL SHEETS
86E	D-6 PAINTING 2000	SANGAMON	13
	2012		11
FED. ROAD DIST. NO. 6 ILLINOIS FED. AID PROJECT			CONTRACT NO. 72048