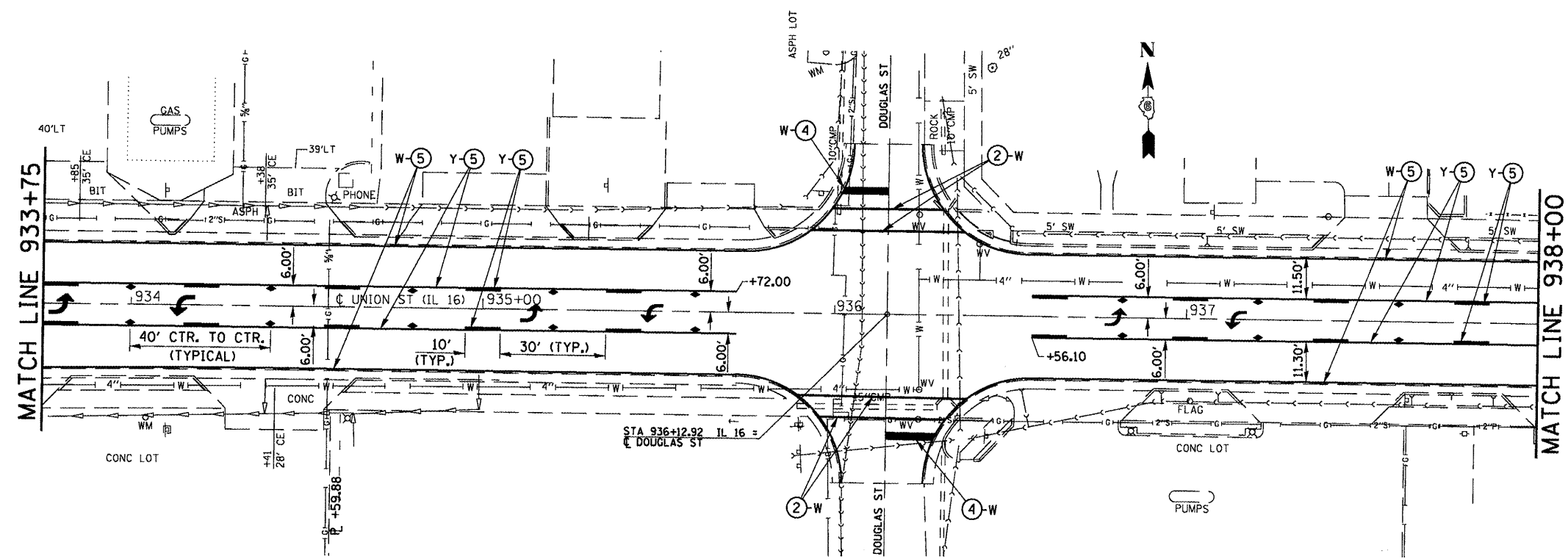


EXIST. CURVE #2  
 P.I. STA = 930+46.67  
 $\Delta = 10^{\circ}30'02''$   
 $D = 2^{\circ}49'27''$   
 $R = 2028.69'$   
 $T = 186.42'$   
 $L = 371.80'$   
 $E = 8.55'$   
 $S.E. =$   
 P.C. STA = 928+60.25  
 P.T. STA = 932+32.05

EXIST. CURVE 1005  
 P.I. STA = 930+47.52  
 $\Delta = 10^{\circ}30'02''$  (RT)  
 $D = 2^{\circ}49'27''$   
 $R = 2,028.72'$   
 $T = 186.42'$   
 $L = 371.80'$   
 $E = 8.55'$   
 $\theta =$   
 $T.R. =$   
 $S.E. RUN =$   
 P.C. STA = 928+61.10  
 P.T. STA = 932+32.90

EXIST. CURVE #2  
 P.I. STA = 930+46.67  
 $\Delta = 10^{\circ}30'02''$   
 $D = 2^{\circ}49'27''$   
 $R = 2028.69'$   
 $T = 186.42'$   
 $L = 371.80'$   
 $E = 8.55'$   
 $S.E. =$   
 P.C. STA = 928+60.25  
 P.T. STA = 932+32.05



**PAVEMENT MARKING LEGEND**

- ① PREFORMED PLASTIC PAVEMENT MARKING, TYPE B, INLAID - LINE 5"
- ② PREFORMED PLASTIC PAVEMENT MARKING, TYPE B, INLAID - LINE 6"
- ③ PREFORMED PLASTIC PAVEMENT MARKING, TYPE B, INLAID - LINE 6" (6' SKIP - 2' DASH)
- ④ PREFORMED PLASTIC PAVEMENT MARKING, TYPE B, INLAID - LINE 24"
- ⑤ THERMOPLASTIC PAVEMENT MARKING - LINE 5"
- ⑥ THERMOPLASTIC PAVEMENT MARKING - LINE 5" (DOUBLE YELLOW LINES @ 13" CENTERS)
- ⑦ THERMOPLASTIC PAVEMENT MARKING - LINE 6"
- ⑧ THERMOPLASTIC PAVEMENT MARKING - LINE 8"
- ⑨ THERMOPLASTIC PAVEMENT MARKING - LINE 12"
- ⑩ PAINT PAVEMENT MARKING - LINE 5"
- ↖ PREFORMED PLASTIC PAVEMENT MARKING, TYPE B, INLAID - LETTERS AND SYMBOLS (WHITE)
- ▶ RAISED REFLECTIVE PAVEMENT MARKER (ONE-WAY CRYSTAL)
- ▲ RAISED REFLECTIVE PAVEMENT MARKER (ONE -WAY AMBER)
- ◆ RAISED REFLECTIVE PAVEMENT MARKER (TWO -WAY AMBER)
- ⊗-W PAVEMENT MARKING, WHITE
- ⊗-Y PAVEMENT MARKING, YELLOW

FILE NAME =	USER NAME = sparkgw	DESIGNED - RTS	REVISED -	<b>STATE OF ILLINOIS DEPARTMENT OF TRANSPORTATION</b>	<b>PAVEMENT MARKING LAYOUT (LITCHFIELD)</b>		F.A.P. RTE. =	SECTION =	COUNTY =	TOTAL SHEETS =	SHEET NO. =
ci:\p\work\p\uidot\sparkgw\d0222005\0672067-shr-pmk.dgn	D67-shr-pmk.dgn	DRAWN - RTS	REVISED -		SCALE: 1" = 40.0000' / in.	SHEET NO. 2 OF 5 SHEETS	STA. TO STA.	MONTCOMERY	80	57	
		CHECKED - RTS	REVISED -		DATE = 06-16-11			CONTRACT NO. 72D67			
		DATE = 06-16-11	REVISED -					FED. ROAD DIST. NO. ILLINOIS FED. AID PROJECT			

325, 42  
 (15, 21)RS-7, 22RS-4, 24RS-8