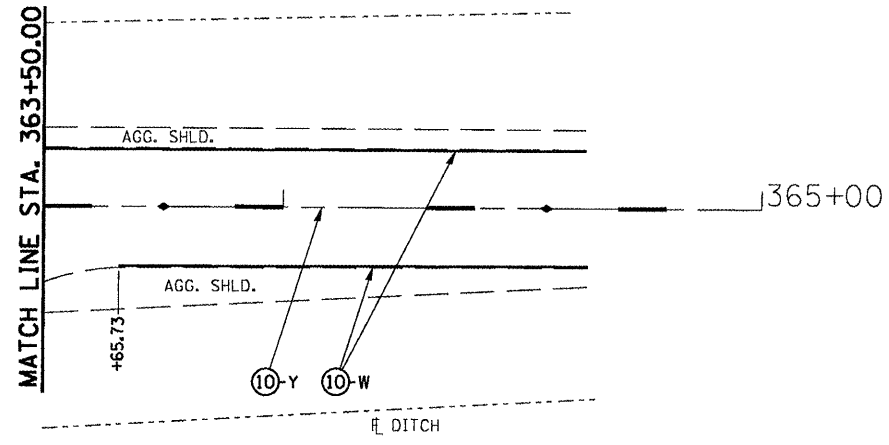
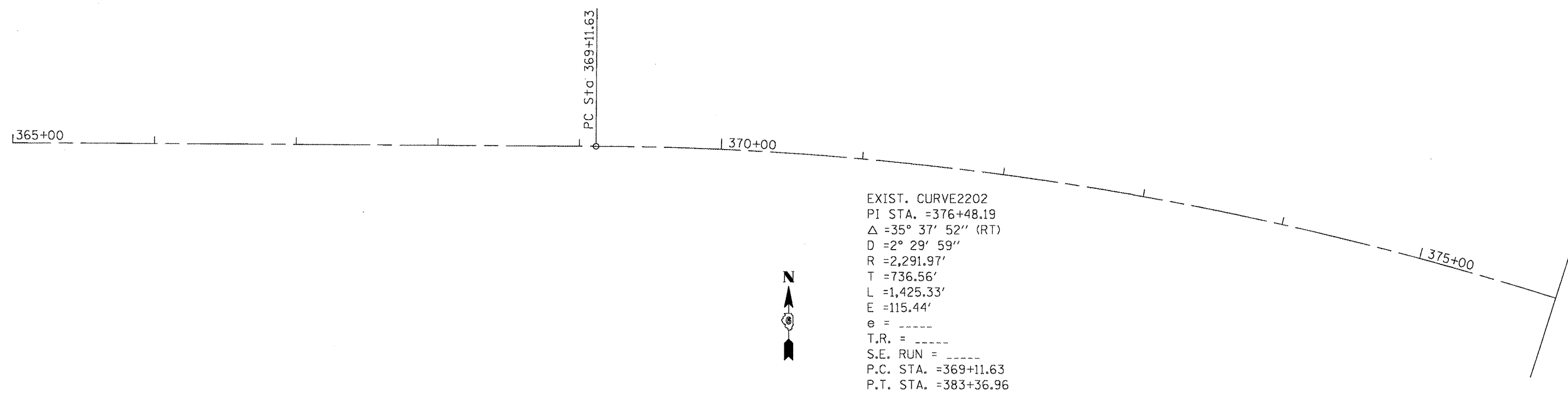


BUSHES &
SMALL TREES
TB



PAVEMENT MARKING LEGEND	
①	PREFORMED PLASTIC PAVEMENT MARKING, TYPE B, INLAID - LINE 5"
②	PREFORMED PLASTIC PAVEMENT MARKING, TYPE B, INLAID - LINE 6"
③	PREFORMED PLASTIC PAVEMENT MARKING, TYPE B, INLAID - LINE 6" (6' SKIP- 2' DASH)
④	PREFORMED PLASTIC PAVEMENT MARKING, TYPE B, INLAID - LINE 24"
⑤	THERMOPLASTIC PAVEMENT MARKING - LINE 5"
⑥	THERMOPLASTIC PAVEMENT MARKING - LINE 5" (DOUBLE YELLOW LINES @ 13" CENTERS)
⑦	THERMOPLASTIC PAVEMENT MARKING - LINE 6"
⑧	THERMOPLASTIC PAVEMENT MARKING - LINE 8"
⑨	THERMOPLASTIC PAVEMENT MARKING - LINE 12"
⑩	PAINT PAVEMENT MARKING - LINE 5"
↙	PREFORMED PLASTIC PAVEMENT MARKING, TYPE B, INLAID - LETTERS AND SYMBOLS (WHITE)
▷	RAISED REFLECTIVE PAVEMENT MARKER (ONE-WAY CRYSTAL)
▷	RAISED REFLECTIVE PAVEMENT MARKER (ONE -WAY AMBER)
◆	RAISED REFLECTIVE PAVEMENT MARKER (TWO -WAY AMBER)
⊗-W	PAVEMENT MARKING, WHITE
⊗-Y	PAVEMENT MARKING, YELLOW



EXIST. CURVE2202
 PI STA. =376+48.19
 Δ =35° 37' 52" (RT)
 D =2° 29' 59"
 R =2,291.97'
 T =736.56'
 L =1,425.33'
 E =115.44'
 e = -----
 T.R. = -----
 S.E. RUN = -----
 P.C. STA. =369+11.63
 P.T. STA. =383+36.96

-- 325, 42
 ** (15, 21)RS-7, 22RS-4, 24RS-8

FILE NAME =	USER NAME = sparkagw	DESIGNED - RTS	REVISED -	STATE OF ILLINOIS DEPARTMENT OF TRANSPORTATION	PAVEMENT MARKING LAYOUT (IL 16 /IL 127 INTERSECTION)			F.A.P. RTE.	SECTION	COUNTY	TOTAL SHEETS	SHEET NO.	
c:\pwork\pwork\sparkagw\0222005\0672067-ahk-pmk.dgn	2067-ahk-pmk.dgn	DRAWN - RTS	REVISED -		SCALE:	SHEET NO. 4 OF 4 SHEETS	STA.	TO STA.	•	**	MONTGOMERY	80	64
		CHECKED - RTS	REVISED -										
		PLT DATE = Aug-25-2011 10:16:15AM	DATE - 06-16-11		REVISED -								
												CONTRACT NO. 72067	
												ILLINOIS FED. AID PROJECT	