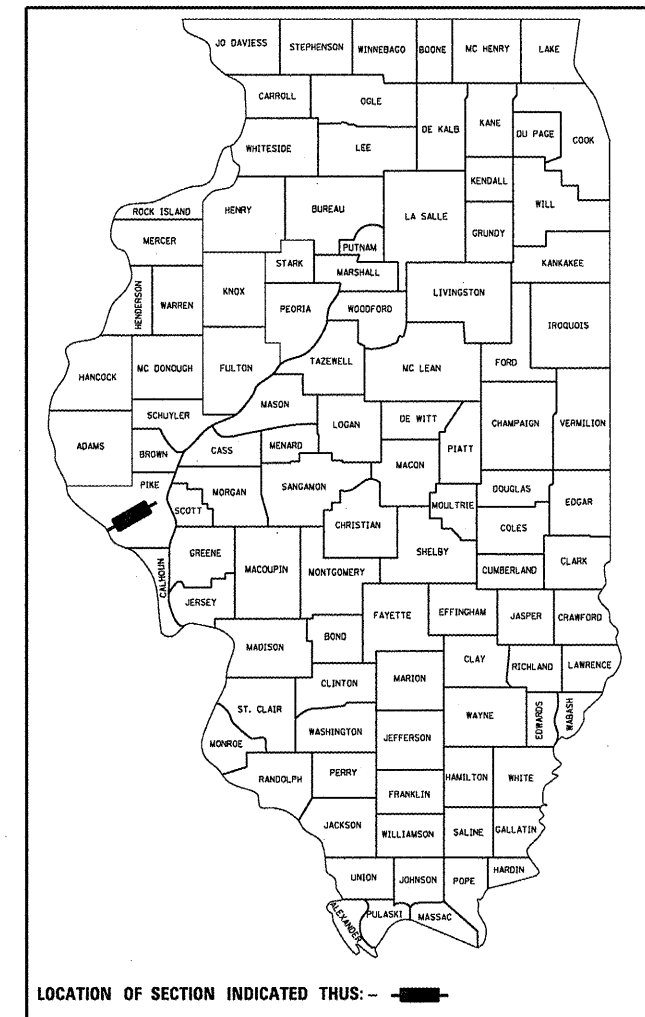


F.A.P. RTE.	SECTION	COUNTY	TOTAL SHEETS	SHEET NO.
321		PIKE	69	1
		ILLINOIS	CONTRACT NO. 72E43	

• 104RS2,BR3;105RS7,BR3,4;106RS6

D-96-071-11



LOCATION OF SECTION INDICATED THUS: - [shaded area] -

INDEX OF SHEETS

SHEET NO.	DESCRIPTION
1	COVER SHEET
2	GENERAL NOTES
3-5	SUMMARY OF QUANTITIES
6-13	SCHEDULE OF QUANTITIES
14-23	TYPICAL SECTIONS
24-27	ALIGNMENT TIES
28-44	PLAN SHEETS
45	US 54 AT IL 96 AND MISC.
46	SUPERELEVATION TRANSITION DETAILS
47	REVERSE CURVE TRANSITION DETAILS
48-49	ENTRANCE DETAILS
50-51	STAGING CONSTRUCTION DETAILS, SN 075-0022
52-55	STRUCTURE PLANS, SN 075-0022
56-57	STAGING CONSTRUCTION DETAILS, SN 075-0077
58-62	STRUCTURE PLANS, SN 075-0077
63-64	STAGING CONSTRUCTION DETAILS, SN 075-0080
65-69	STRUCTURE PLANS, SN 075-0080

STATE OF ILLINOIS DEPARTMENT OF TRANSPORTATION DIVISION OF HIGHWAYS PROPOSED HIGHWAY PLANS

FAP ROUTE 321 (US 54)
SECTION 104RS2,BR3;105RS7,BR3,4;106RS6
PROJECT NHF-0321(014)
SMART RESURFACING, BRIDGE REPAIRS
PIKE COUNTY

C-96-071-11

IDOT HIGHWAY STANDARDS

000001-06	701006-03	701321-12
442201-03	701011-02	701326-04
606006-02	701201-04	701501-06
635006-03	701301-04	701901-02
635011-02	701306-03	780001-03
701001-02	701311-03	781001-03

STA. 274 + 40
REPLACEMNT OF EXPANSION JOINTS
WITH STRIP SEAL
BRIDGE WIDTH: 46'-0"
151'-10" BK TO BACK ABUTMENT.(075-0080)

STA. 258 + 50
REPLACEMNT OF EXPANSION JOINTS
WITH STRIP SEAL
BRIDGE WIDTH: 46'-0"
137'-8" BK TO BACK ABUTMENT.(075-0077)

STA. 49 + 51.00
REPLACEMENT OF NORTH BEAM
AND BRIDGE RAIL
BRIDGE WITH: 45'-0"
33'-0" BK TO BK OF ABUTMENT. (075-0022)

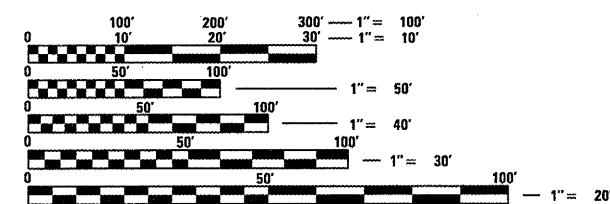
SECTION ENDS
STA. 552 + 34.00

STATION EQUATION
STA. 508 + 94.98 BK. =
STA. 509 + 81.78 AHD

STATION EQUATION
STA. 365 + 23.40 BK. =
STA. 365 + 30.93 AHD

STATION EQUATION
STA. 303 + 40.90 BK. =
STA. 325 + 00.00 AHD

BRIDGE PAVING OMISSION
STA. 257 + 81.67 TO 259 + 18.33
STA. 273 + 65.39 TO 275 + 16.22
STA. 172 + 84.25 TO 173 + 39.75
STA. 104 + 29.25 TO 104 + 72.75
STA. 49 + 35.00 TO 49 + 67.00

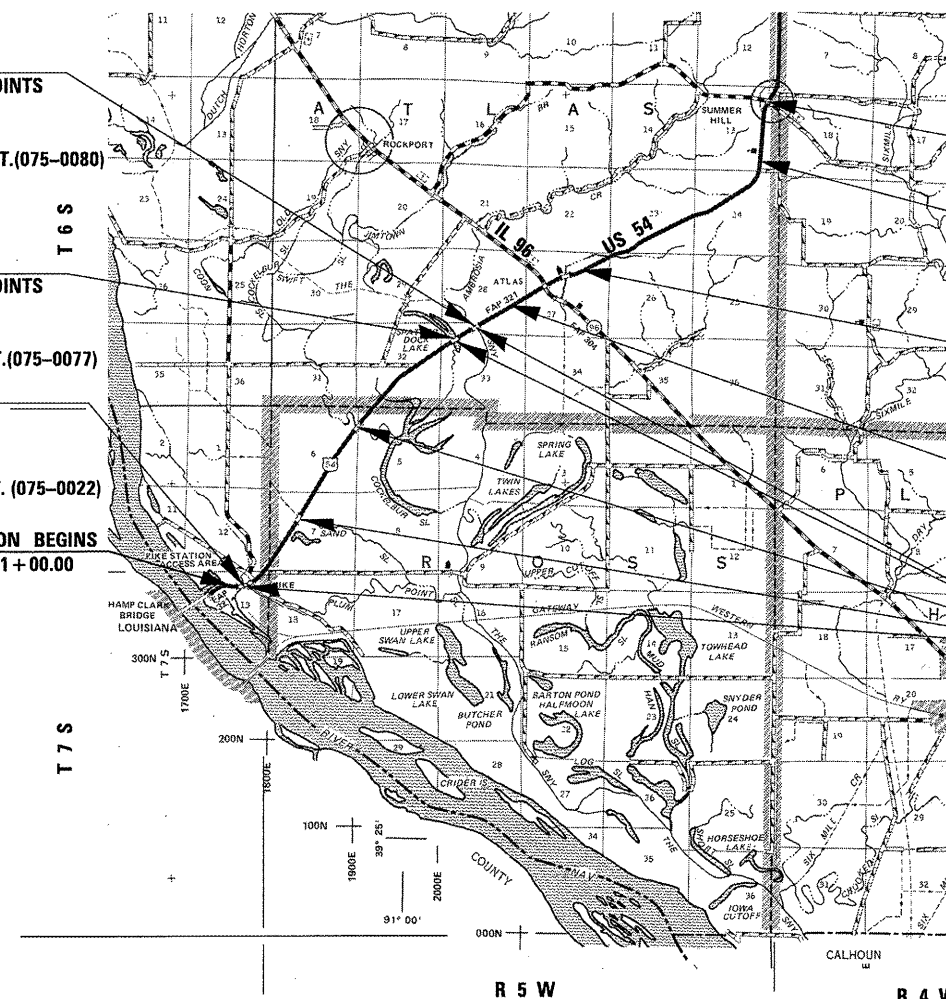


FULL SIZE PLANS HAVE BEEN PREPARED USING STANDARD ENGINEERING SCALES. REDUCED SIZED PLANS WILL NOT CONFORM TO STANDARD SCALES. IN MAKING MEASUREMENTS ON REDUCED PLANS, THE ABOVE SCALES MAY BE USED.

J.U.L.I.E.
JOINT UTILITY LOCATION INFORMATION FOR EXCAVATION
1-800-892-0123
OR 811

SENIOR TEAM LEADER: MARK DUST (217)-785-0597
TEAM ENGINEER: MARK DUST (217)-785-0597

CONTRACT NO. 72E43



GROSS LENGTH = 488 + 80.57 FT. = 9.258 MILE
NET LENGTH = 484 + 62.08 FT. = 9.178 MILE
HIGHWAY CLASSIFICATION = OTHER PRINCIPAL ARTERIAL

ADT = 2200 (2009)
PV = 1804 (82.0%)
SU = 117 (5.3%)
MU = 279 (12.7%)

STATE OF ILLINOIS
DEPARTMENT OF TRANSPORTATION
DIVISION OF HIGHWAYS

SUBMITTED Oct 31 20 11

Ray Z. Dalk
DEPUTY DIRECTOR OF HIGHWAYS, REGION ENGINEER

December 9 20 11
Scott E. Stitt P.E.
ENGINEER OF DESIGN AND ENVIRONMENT

December 9 20 11
William R. Freyler
DIRECTOR OF HIGHWAYS, CHIEF ENGINEER

PRINTED BY THE AUTHORITY
OF THE STATE OF ILLINOIS