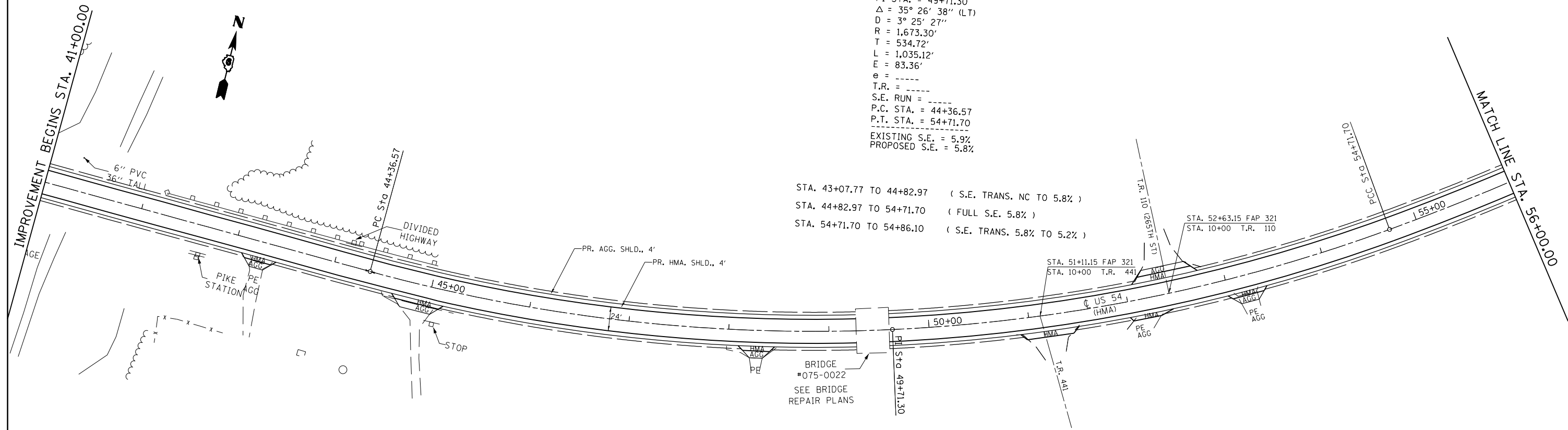


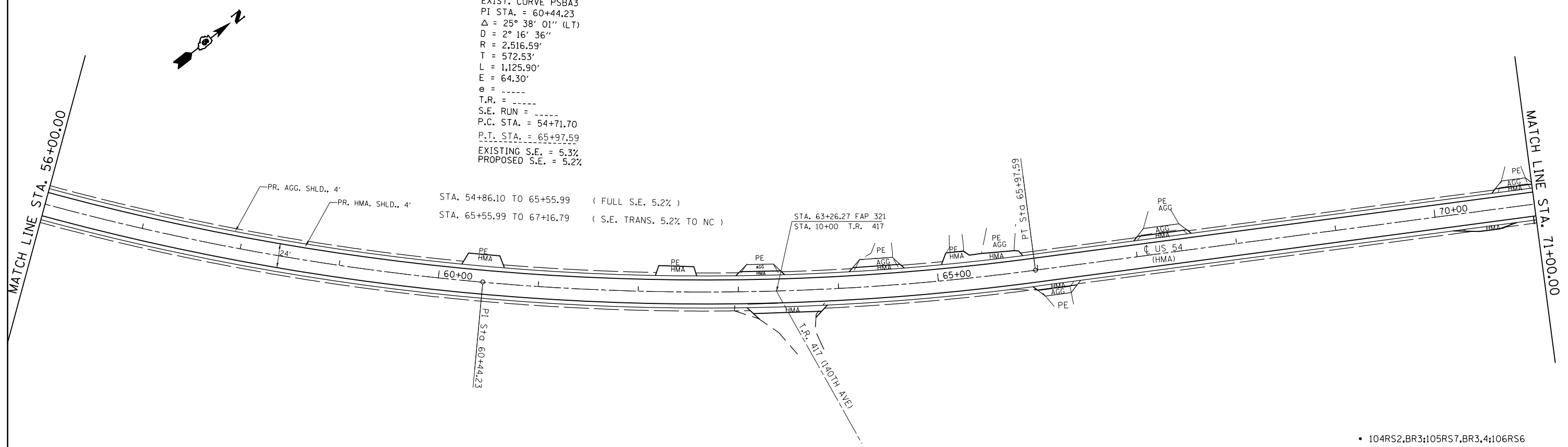
EXIST. CURVE PSBA2
 PI STA. = 49+71.30
 $\Delta = 35^\circ 26' 38''$ (LT)
 $D = 3^\circ 25' 27''$
 $R = 1,673.30'$
 $T = 534.72'$
 $L = 1,035.12'$
 $E = 83.36'$
 $e = \text{-----}$
 T.R. = -----
 S.E. RUN = -----
 P.C. STA. = 44+36.57
 P.T. STA. = 54+71.70
 EXISTING S.E. = 5.9%
 PROPOSED S.E. = 5.8%

STA. 43+07.77 TO 44+82.97 (S.E. TRANS. NC TO 5.8%)
 STA. 44+82.97 TO 54+71.70 (FULL S.E. 5.8%)
 STA. 54+71.70 TO 54+86.10 (S.E. TRANS. 5.8% TO 5.2%)



EXIST. CURVE PSBA3
 PI STA. = 60+44.23
 $\Delta = 25^\circ 38' 01''$ (LT)
 $D = 2^\circ 16' 36''$
 $R = 2,516.59'$
 $T = 572.53'$
 $L = 1,125.90'$
 $E = 64.30'$
 $e = \text{-----}$
 T.R. = -----
 S.E. RUN = -----
 P.C. STA. = 54+71.70
 P.T. STA. = 65+97.59
 EXISTING S.E. = 5.3%
 PROPOSED S.E. = 5.2%

STA. 54+86.10 TO 65+55.99 (FULL S.E. 5.2%)
 STA. 65+55.99 TO 67+16.79 (S.E. TRANS. 5.2% TO NC)



• 104RS2,BR3;105RS7,BR3,4;106RS6

FILE NAME =	USER NAME = sparksgw	DESIGNED -	REVISED -	STATE OF ILLINOIS DEPARTMENT OF TRANSPORTATION	PLAN SHEET			F.A.P. RTE. =	SECTION =	COUNTY =	TOTAL SHEETS =	SHEET NO. =		
c:\pwwork\pwwork\sparksgw\10265393\PLAN.dgn		DRAWN -	REVISED -		321	•	PIKE	69	28					
PLOT SCALE = 100.0000' / in.		CHECKED -	REVISED -		SCALE: 1"=100'			SHEET NO. 1 OF 17 SHEETS			STA. 41+00.00 TO STA. 71+00.00		CONTRACT NO. 72E43	
PLOT DATE = Oct-31-2011 03:51:33PM		DATE -	REVISED -		ILLINOIS FED. AID PROJECT									