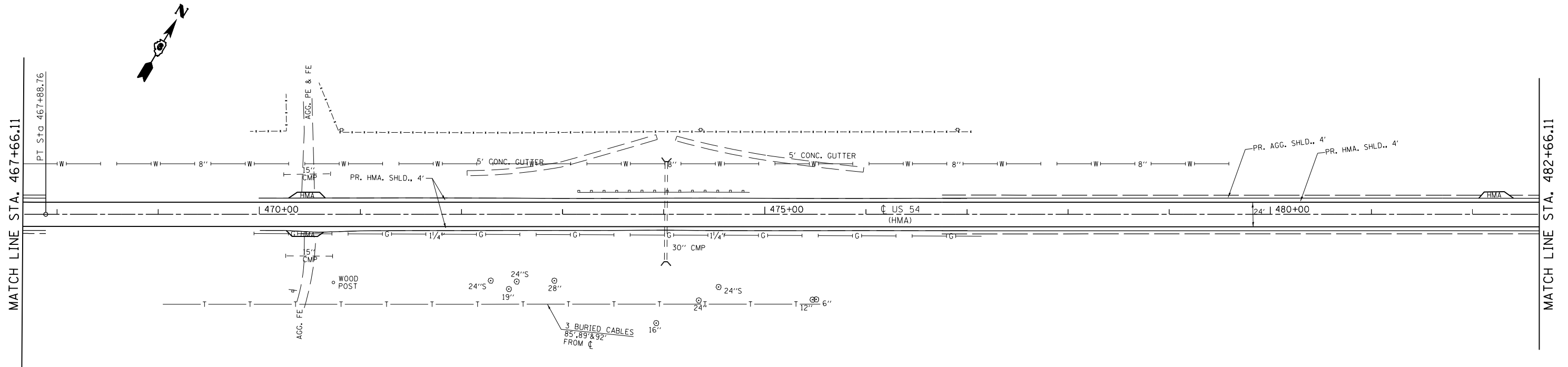
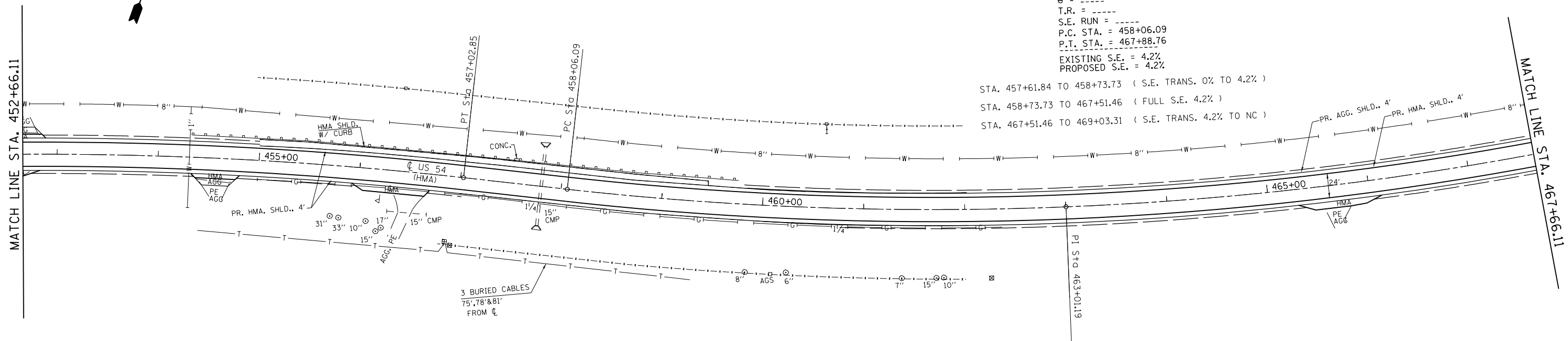


EXIST. CURVE 402
 PI STA. = 463+01.19
 $\Delta = 17^\circ 17' 23''$ (LT)
 $D = 1^\circ 45' 34''$
 $R = 3,256.45'$
 $T = 495.10'$
 $L = 982.67'$
 $E = 37.42'$
 $e = \text{-----}$
 $T.R. = \text{-----}$
 $S.E. RUN = \text{-----}$
 $P.C. STA. = 458+06.09$
 $P.T. STA. = 467+88.76$
 EXISTING S.E. = 4.2%
 PROPOSED S.E. = 4.2%

STA. 457+61.84 TO 458+73.73 (S.E. TRANS. 0% TO 4.2%)
 STA. 458+73.73 TO 467+51.46 (FULL S.E. 4.2%)
 STA. 467+51.46 TO 469+03.31 (S.E. TRANS. 4.2% TO NC)



• 104RS2,BR3;105RS7,BR3,4;106RS6

FILE NAME =	USER NAME = sparksgw	DESIGNED -	REVISED -
ei:\pwwork\pwwork\sparksgw\10265393\PLAN\1.dgn		DRAWN -	REVISED -
		CHECKED -	REVISED -
		DATE -	REVISED -

**STATE OF ILLINOIS
 DEPARTMENT OF TRANSPORTATION**

PLAN SHEET

SCALE: 1"=100' SHEET NO. 14 OF 17 SHEETS STA. 452+66.11 TO STA. 482+66.11

F.A.P. RTE.	SECTION	COUNTY	TOTAL SHEETS	SHEET NO.
321	•	PIKE	69	41
CONTRACT NO. 72E43				
ILLINOIS FED. AID PROJECT				