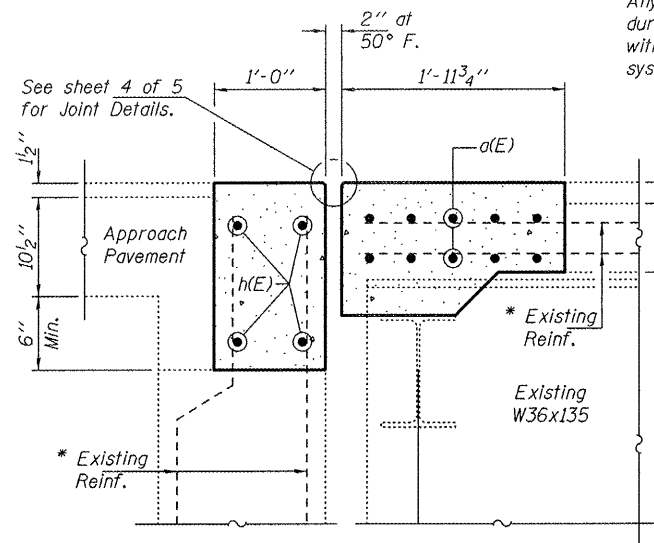
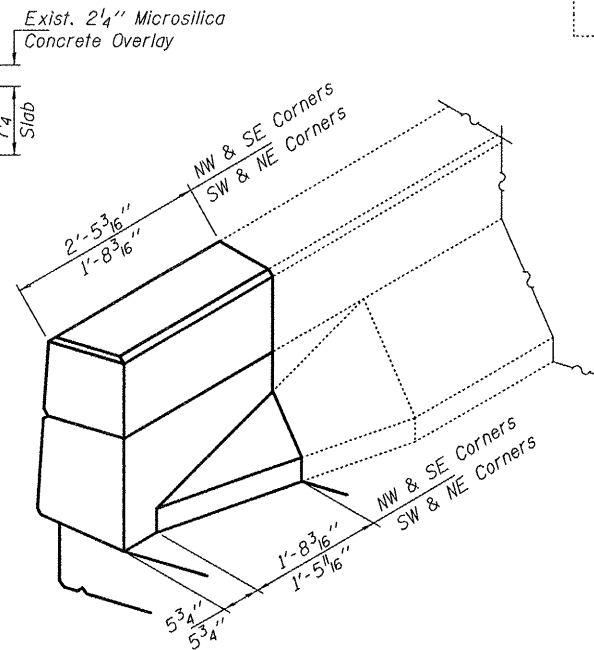


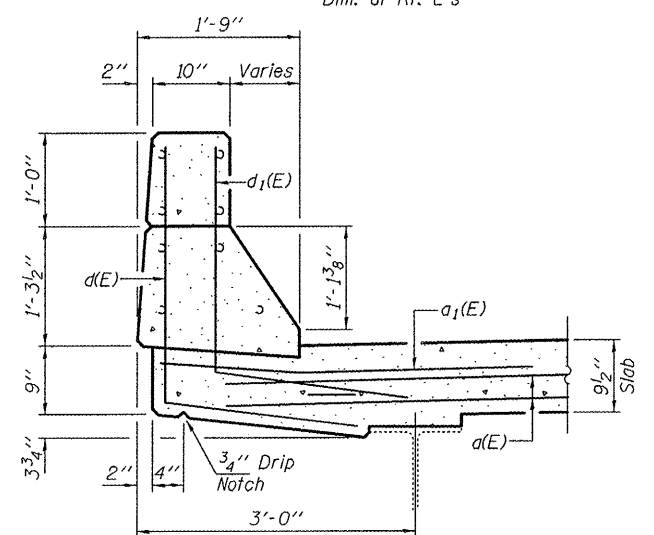
* Existing reinforcement bars extending into the removal area shall be cleaned, straightened and incorporated into the new construction. Any reinforcement bars that are damaged during concrete removal shall be replaced with an approved bar splicer or anchorage system. Cost included with Concrete Removal.



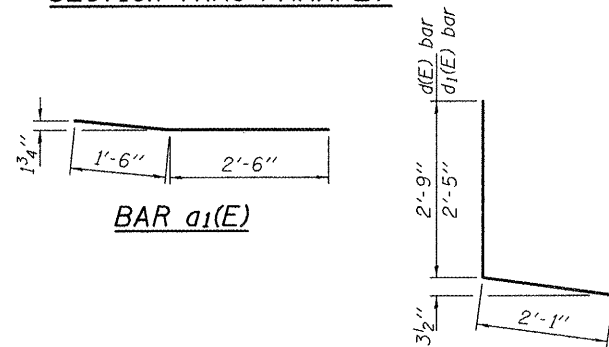
SECTION B-B
Dim. at Rt. L's



ISOMETRIC PARAPET END DETAILS
Hatch Block, Railing, and Expansion Joint not shown for clarity.

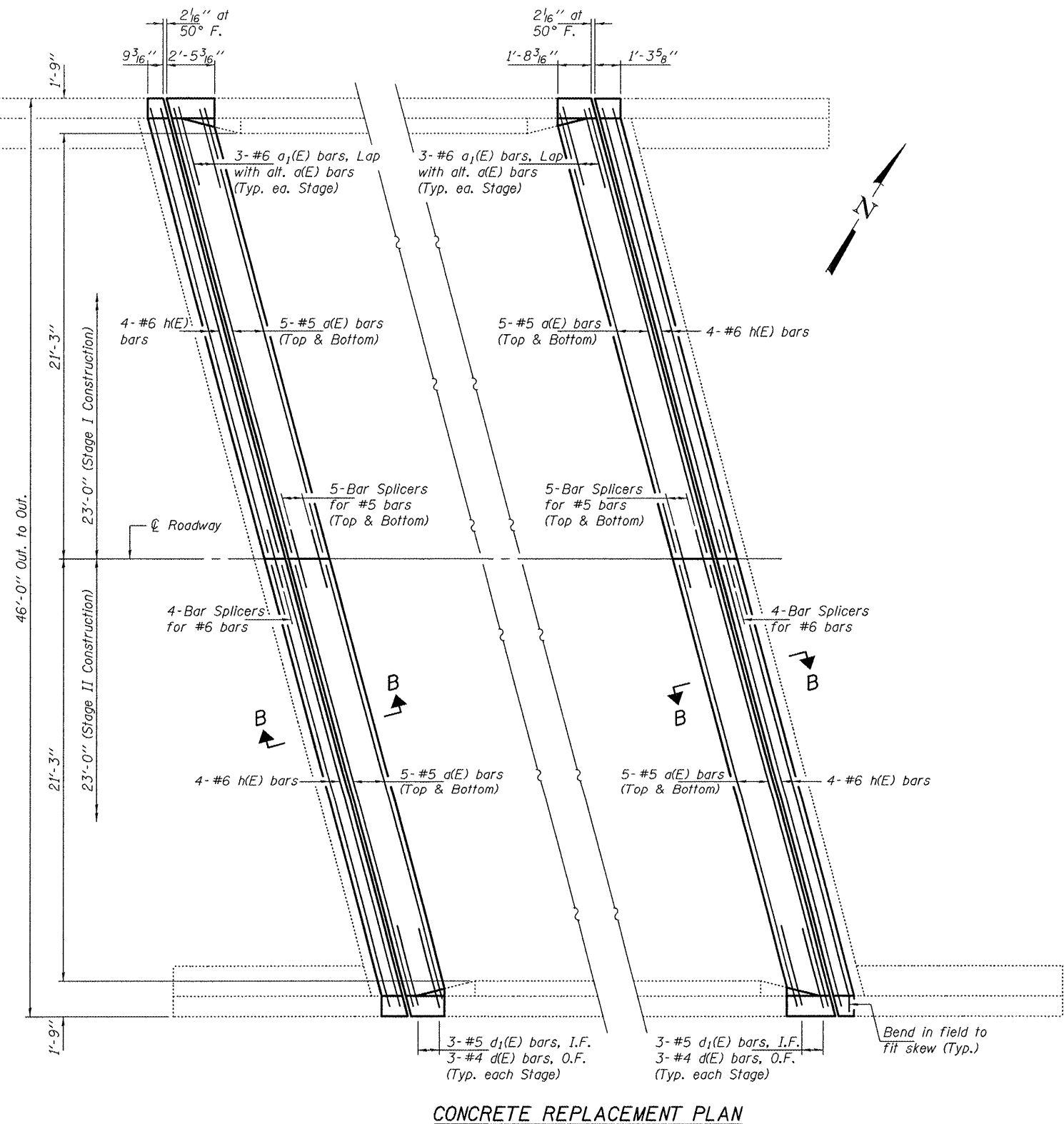


SECTION THRU PARAPET



BILL OF MATERIAL

Bar	No.	Size	Length	Shape
d(E)	40	#5	22'-9"	—
a1(E)	12	#6	4'-0"	—
d1(E)	12	#4	4'-10"	L
d1(E)	12	#5	4'-6"	L
h(E)	16	#6	23'-5"	—
Concrete Removal			Cu. Yd.	15.5
Concrete Superstructure			Cu. Yd.	15.4
Reinforcement Bars, Epoxy Coated			Pound	1680



CONCRETE REPLACEMENT PLAN

DESIGNED - IJL
 CHECKED - ADY
 DRAWN - Kyle M. Steffen
 CHECKED - IJL ADY

EXAMINED
 PASSED

DATE - NOVEMBER 28, 2011

STATE OF ILLINOIS
 DEPARTMENT OF TRANSPORTATION

CONCRETE REPLACEMENT DETAILS
 SN 075-0080

SHEET NO. 3 OF 5 SHEETS

F.A.P. RTE.	SECTION	COUNTY	TOTAL SHEETS	SHEET NO.
321	104RS2, BR3;	PIKE	69	67
	105RS7, BR3, 4; 106RS6		CONTRACT NO. 72E43	
ILLINOIS FED. AID PROJECT				