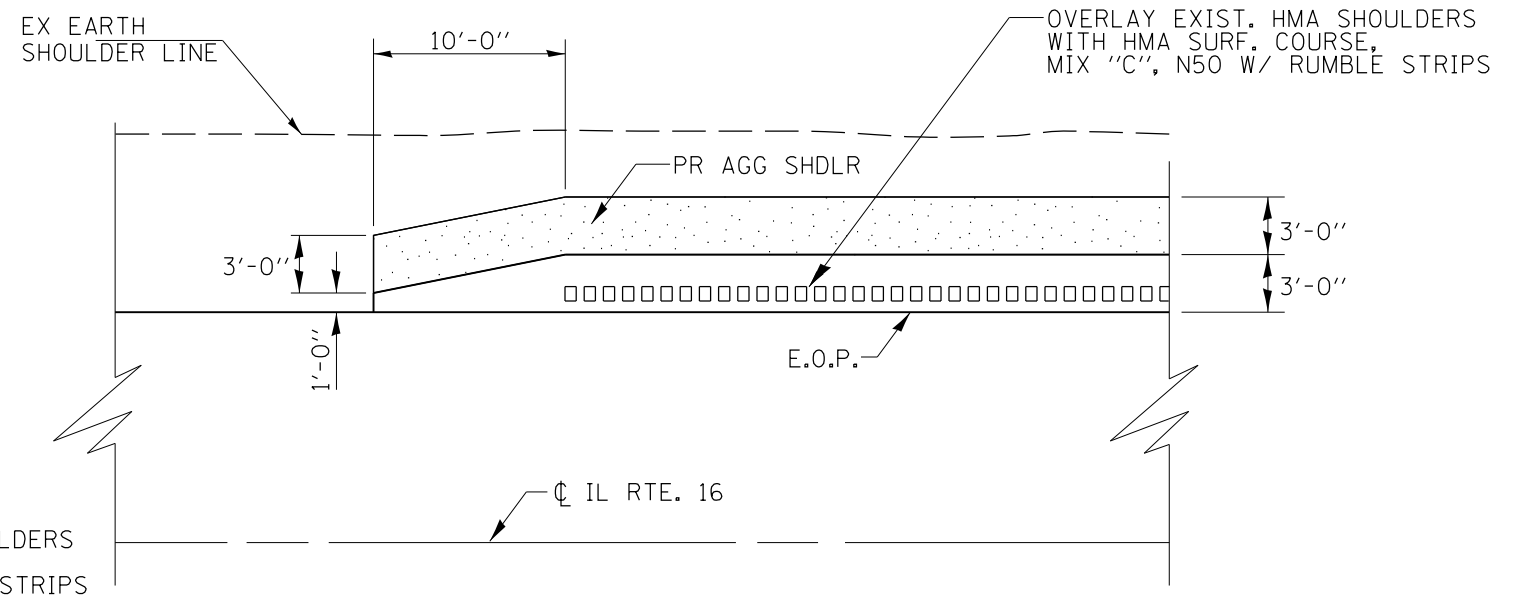
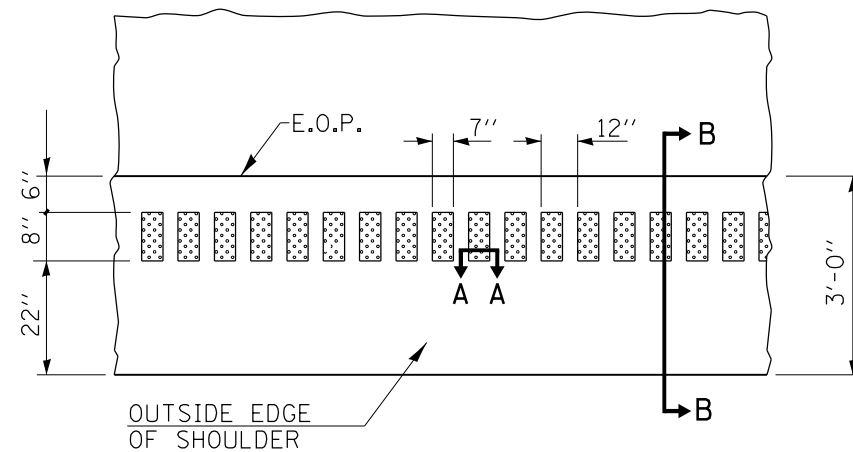


PLAN VIEW
TYPICAL APPLICATION AT
INTERSECTION & ENTRANCE

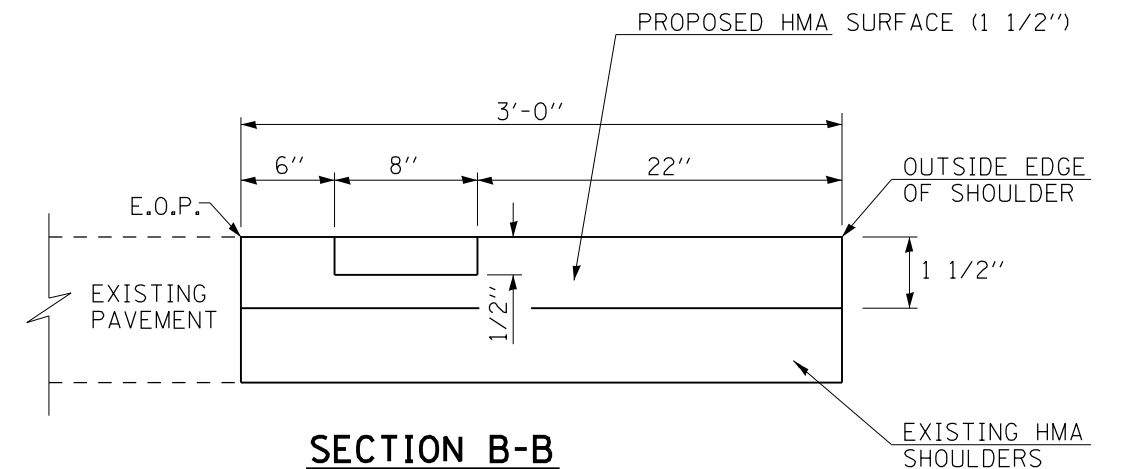


TAPER DETAIL FOR PROPOSED AGGREGATE & HOT-MIX ASPHALT SHOULDERS

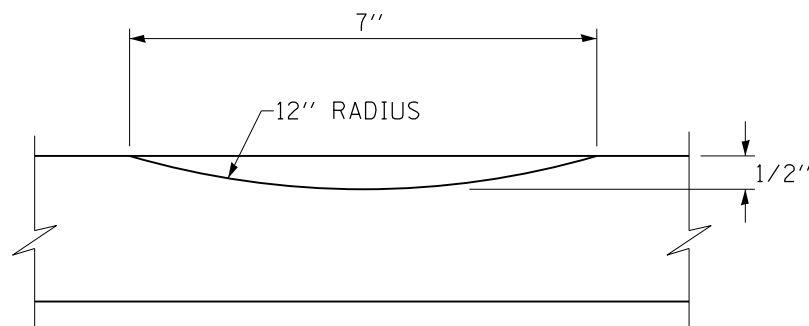
(TRANSITION WIDTH FOR PROPOSED HOT-MIX ASPHALT SHOULDERS FROM 1'-0" TO 3'-0" WITHIN 10'-0")



PLAN VIEW



SECTION B-B



SECTION A-A

FILE NAME =	USER NAME = sparksgw	DESIGNED -	REVISED -	STATE OF ILLINOIS DEPARTMENT OF TRANSPORTATION	SHOULDER & RUMBLE STRIP DETAILS				F.A.P. RTE.	SECTION	COUNTY	TOTAL SHEETS	SHEET NO.
ei:\pw\work\p\idot\sparksgw\10264305\0672E47-sht-details.dgn		DRAWN -	REVISED -		325	14 RS-5	MACOUPIN	70	6				
PLOT SCALE = 100.0000' / 1in.		CHECKED -	REVISED -		CONTRACT NO. 72E47								
PLOT DATE = Nov-01-2011 04:17:35PM		DATE -	REVISED -		ILLINOIS FED. AID PROJECT								
					SCALE:	SHEET NO.	OF SHEETS	STA.	TO STA.				