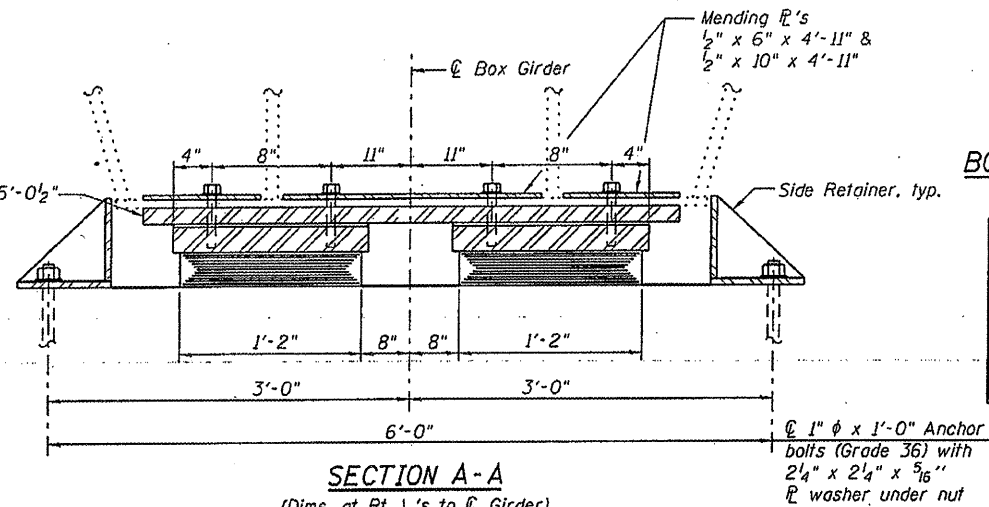


ELEVATION AT PIER 3

TYPE I ELASTOMERIC EXP. BRG.



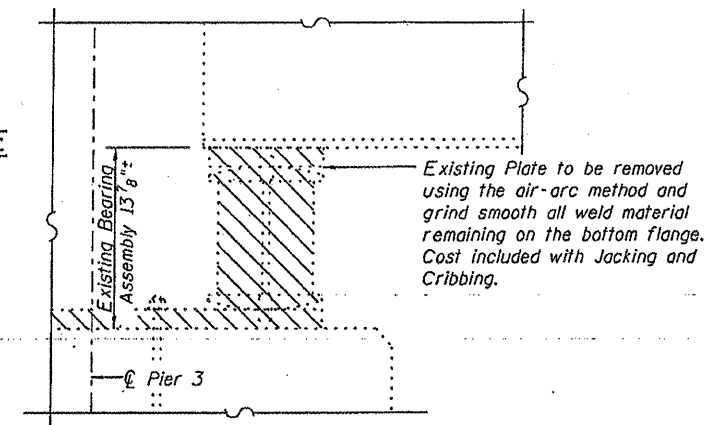
SECTION A-A  
(Dims. at Rt. L's to C Girders)

BOX GIRDER REACTION TABLE

(From Existing Plans)

	Per Girder	Per Bearing
Dead Load (k)	120	60
Live Load (k)	68	34
Impact (k)	14	7
Total (k)	202	101
Min. Jack Capacity (Tons)	120	60

No Live Load during jacking.



EXISTING BEARING REMOVAL DETAIL

Notes:

Hatched area indicates Bearing removal. Cost included with Jacking and Cribbing. See Special Provision for Jacking and Cribbing.

Anchor bolts shall be ASTM F1554 all-thread (or an Engineer-approved alternate material) of the grade(s) and diameter(s) specified. ASTM A307 Grade C anchor bolts may be used in lieu of ASTM F1554 Grade 36 (Fy=36ksi). The corresponding specified grade of AASHTO M314 anchor bolts may be used in lieu of ASTM F1554.

Anchor bolts for side retainers may be cast in place or installed in holes drilled after members are in place.

Drilled and set anchor bolts shall be installed according to Article 521.06 of the Standard Specifications.

Two 1/8 in. adjusting shims shall be provided for each bearing in addition to all other plates or shims and placed as shown on bearing details.

Existing bearing dimensions shown are taken from the original plans.

Cost of 1/2" top plate, side retainers, fasteners and other steel members required for the bearing assembly shall be included in the cost of Elastomeric Bearing Assembly, Type I.

Fasteners shall be AASHTO M164 Type 1, mechanically galvanized bolts.

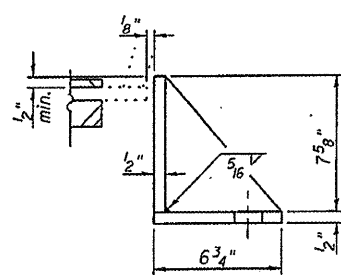
The bearings shall be in place and the jacks lowered before the new concrete deck is poured.

Cost of 1/2" mending plates and fasteners required for beam end repairs is included in the cost of Structural Steel Repair.

See Sheet 13 of 20 for details.

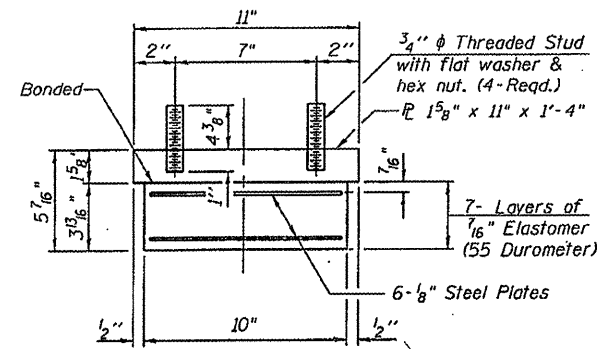
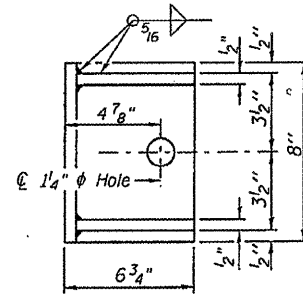
See Sheet 14 of 20 for Pier 3 reconstruction details.

See Sheet 13 of 20 for details of 1/2" Top Plate, 1/2" Mending Plates and Anchor Bolt Layout.



SIDE RETAINER

Equivalent rolled angle with stiffeners will be allowed in lieu of welded plates.



BEARING ASSEMBLY

Note:

Shim plates shall not be placed under Bearing Assembly.

BILL OF MATERIAL

Item	Unit	Total
Elastomeric Bearing Assembly Type I	Each	24
Anchor Bolts, 1"	Each	24
Jacking and Cribbing	Each	12