

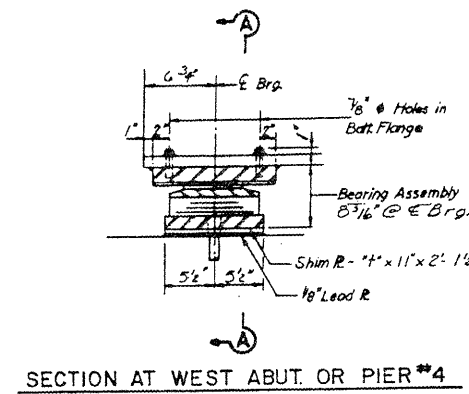
| DATE | REVISION | BY | NO. |
|------|----------|--------|-------|
| 7/37 | 11/18/11 | Menard | 85/39 |

TABLE FOR "I" DIMENSION FOR SHIM PLATES

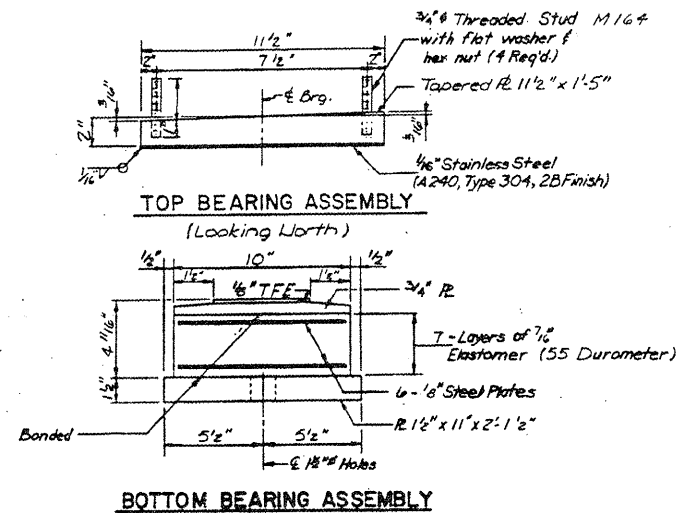
| Girder Location | Girder #1 | Girder #2 | Girder #3 | Girder #4 | Girder #5 |
|-----------------|-----------|-----------|-----------|-----------|-----------|
| W. Abut. | — | — | 8" | — | — |
| Pier #4 | — | — | 8" | — | — |

TABLE FOR "I" DIMENSION FOR SHIM PLATES

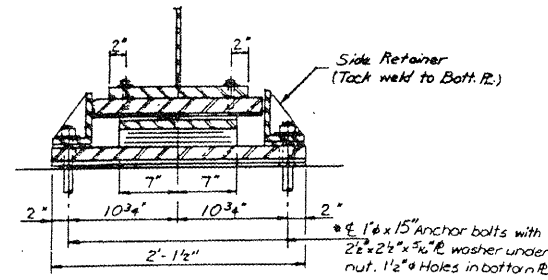
| Girder Location | Girder #1 | Girder #2 | Girder #3 | Girder #4 | Girder #5 |
|-----------------|-----------|-----------|-----------|-----------|-----------|
| Pier #1 | — | — | 8" | — | — |
| Pier #3 | — | — | 8" | — | — |



TYPE II TFE ELASTOMERIC EXP. BRG.



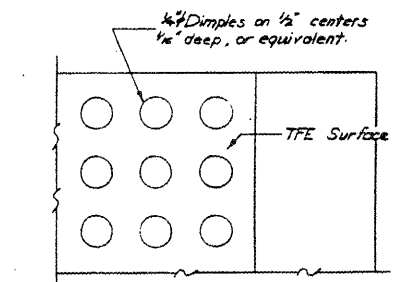
BOTTOM BEARING ASSEMBLY



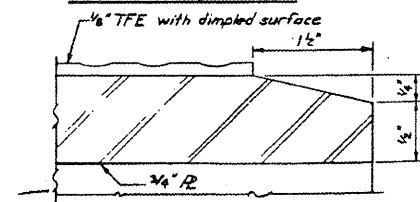
SECTION A-A

NOTE: After beams have been erected holes of expansion bearings shall be drilled and anchor bolts grouted in place.

All bearing devices are M-103, unless noted. The cost of side retainers is incidental to the cost of elastomeric bearings.



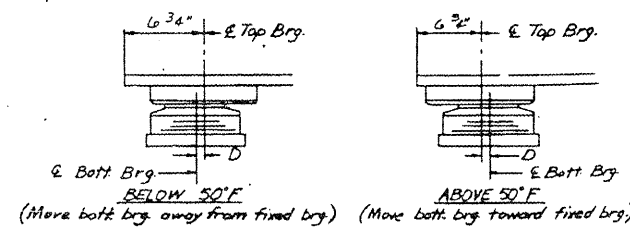
PLAN - TFE SURFACE



SECTION THRU TFE

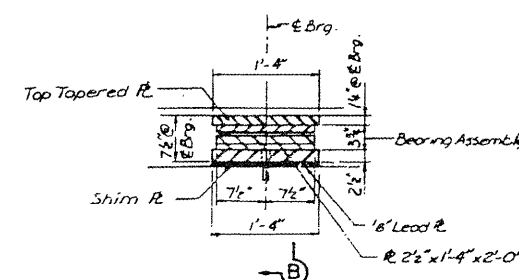
NOTE: The 1/8" TFE sheet shall be bonded directly to the top steel plate with a two-component, medium viscosity epoxy resin, conforming to the requirements of the Federal Specification MMM-A-134, Type I. The bond agent shall be applied on the full area of contact surfaces.

Bonding of 1/8" TFE sheet during vulcanizing process will be permitted provided the process and method of adjusting assembly height is approved by the Engineer.

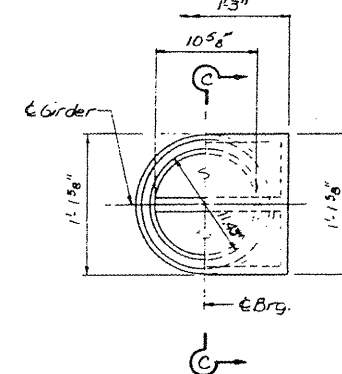


SETTING ANCHOR BOLTS AT EXP. BRG.

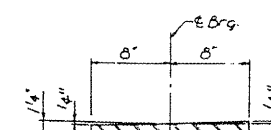
D = 1/8" per each 100' of expansion for every 15° temp. change from the normal temp. of 50°F.



SECTION AT PIER #1 OR #3

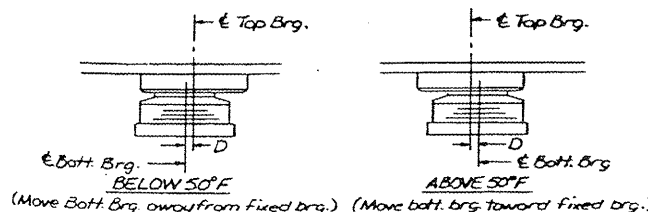


CUT-AWAY PLAN BEARING ASSEMBLY



TOP TAPERED PLATE

(Looking North)
(M223 Gr. 50)

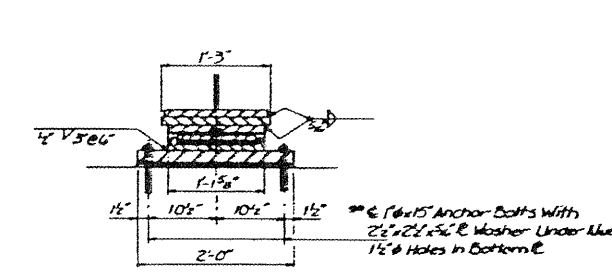


SETTING ANCHOR BOLTS AT EXP. BRG.

D = 1/8" per each 100' of expansion for every 15° temp. change from the normal temp. of 50°F.

FLOATING BEARING - GUIDED EXPANSION
LOAD RATING = 300 KIPS

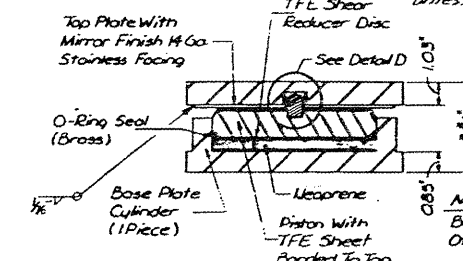
PIER #1 & #3



SECTION B-B

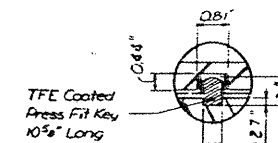
NOTE: After Beams Have Been Erected Holes At Expansion Bearings Shall Be Drilled And Anchor Bolts Grouted In Place.

All Bearing Devices Are M-103, unless noted.

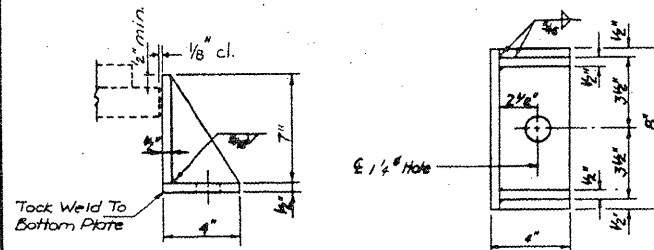


SECTION C-C

NOTE: Bearing Assembly Capable Of Longitudinal Movement ±1"



DETAIL D



SIDE RETAINER

WEST ABUT. & PIER #4

FOR INFORMATION ONLY

EXISTING PLANS, SN 065-0016
VARIOUS ROUTES
D6REHAB BDGE PAINTING 2012
MENARD, SANGAMON COUNTIES