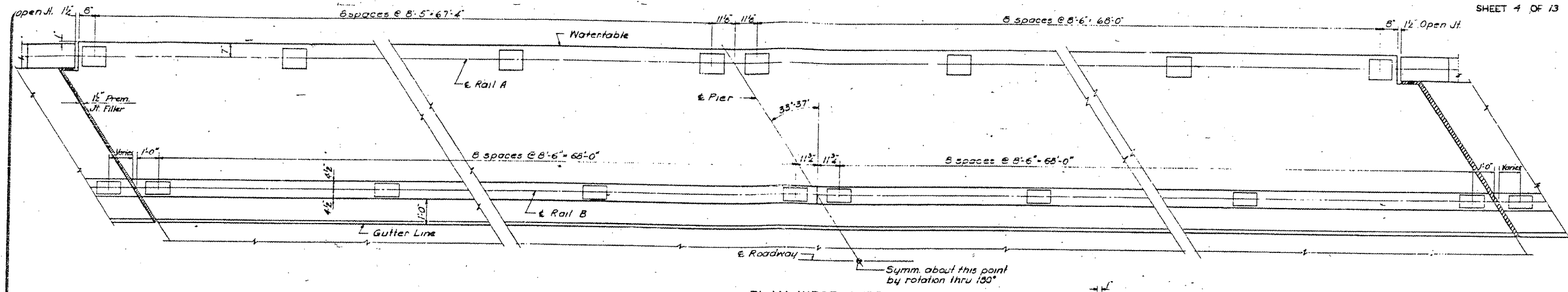


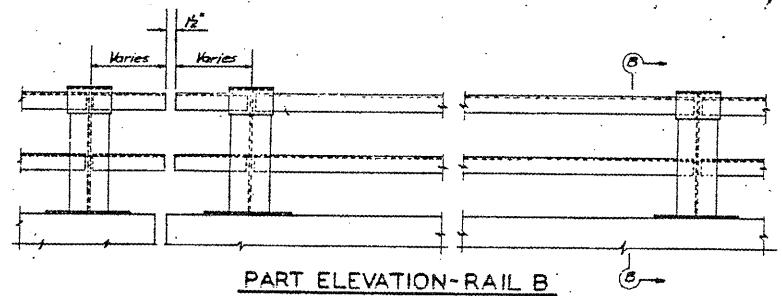
STATE OF ILLINOIS  
DEPARTMENT OF PUBLIC WORKS & BUILDINGS  
DIVISION OF HIGHWAYS

ROUTE NO.	SEC.	COUNTY	TOTAL SHEETS	SHEET NO.
F.A.I. 04	84	Sangamon	42	15
PER. ROAD DIST. NO. 7 ILLINOIS PROJECT				

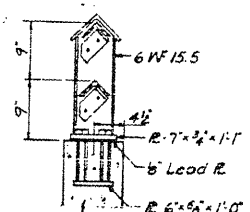
SHEET 4 OF 13



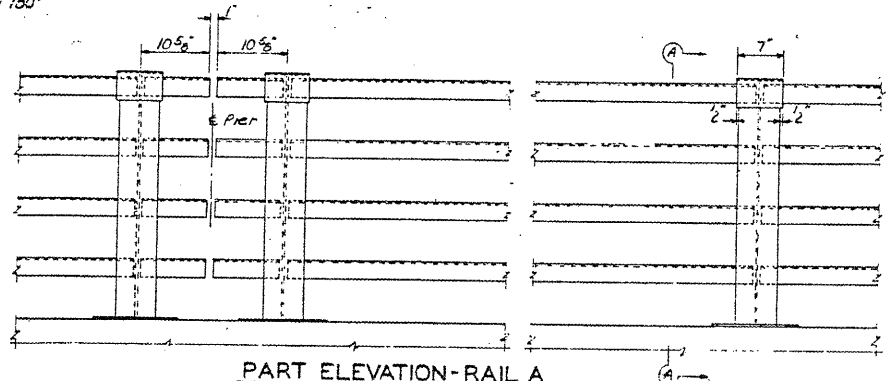
PLAN-WEST CURB



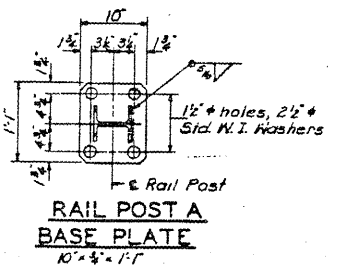
PART ELEVATION-RAIL B



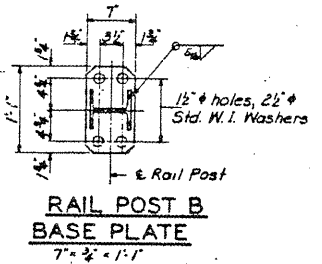
SECTION B-B  
Rail Post B



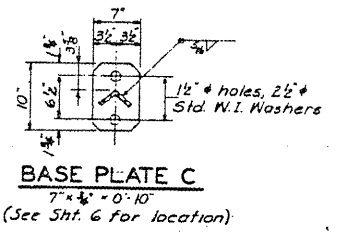
PART ELEVATION-RAIL A



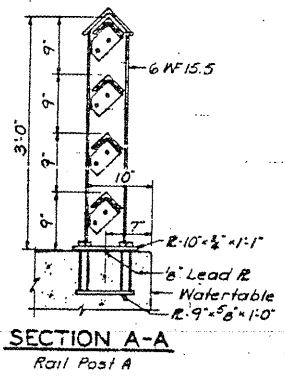
RAIL POST A  
BASE PLATE  
10" x 3" x 1/4"



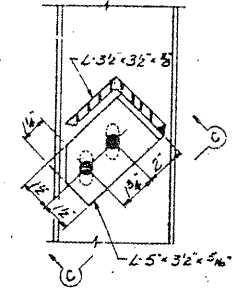
RAIL POST B  
BASE PLATE  
7" x 3" x 1/4"



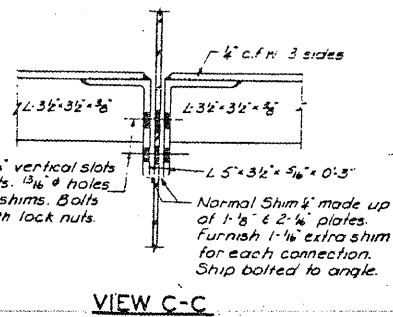
BASE PLATE C  
7" x 4" x 0.10"  
(See Sht. 6 for location)



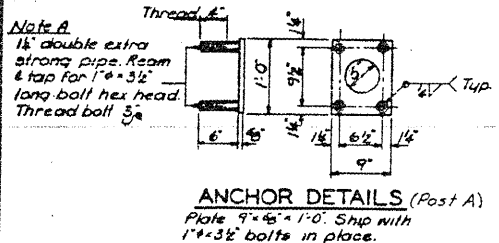
SECTION A-A  
Rail Post A



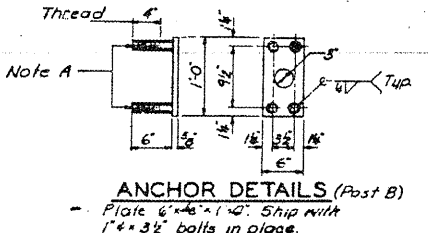
TYPICAL CONNECTION



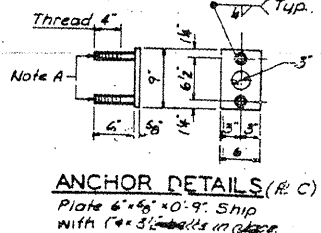
VIEW C-C



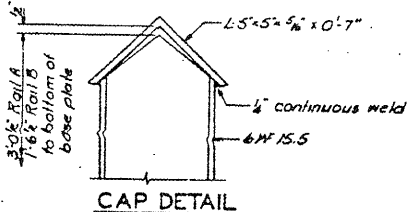
ANCHOR DETAILS (Post A)  
Plate 9" x 6" x 1'-0". Ship with 1" x 3 1/2" bolts in place.



ANCHOR DETAILS (Post B)  
Plate 6" x 6" x 1'-0". Ship with 1" x 3 1/2" bolts in place.



ANCHOR DETAILS (R. C.)  
Plate 6" x 6" x 0.9". Ship with 1" x 3 1/2" bolts in place.



CAP DETAIL

Note: Item Furnishing & Erecting Metal Handrail includes both the two angle & the four angle rail.

Work this Sheet with Sheet Nos. 5 & 6

NOTE: Furnish one 1/8" and two 1/16" shims for 50% of the rail posts.

BILL OF MATERIAL

Furnishing & Erecting Metal Handrail	Lin. Ft.	915
* Includes	435 lin. ft. Rail A	
	480 lin. ft. Rail B	

HANDRAIL DETAILS  
WEST LAKE DRIVE OVER FED. AID INTERSTATE

F.A.I. ROUTE 55 SEC. 84-3HB-3  
SANGAMON COUNTY  
STATION 127+51.53

DESIGNED: RES	EXAMINED:	10
CHECKED: R.J.Q.	DRAWN:	
APPROVED: D.J.M.	APPROVED:	
CHECKED: R.J.Q.	DATE:	

FOR INFORMATION ONLY

EXISTING PLANS, SN 084-0092  
VARIOUS ROUTES  
D6REHAB BDGE PAINTING 2012  
MENARD, SANGAMON COUNTIES