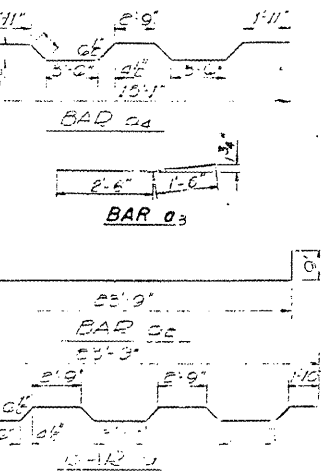
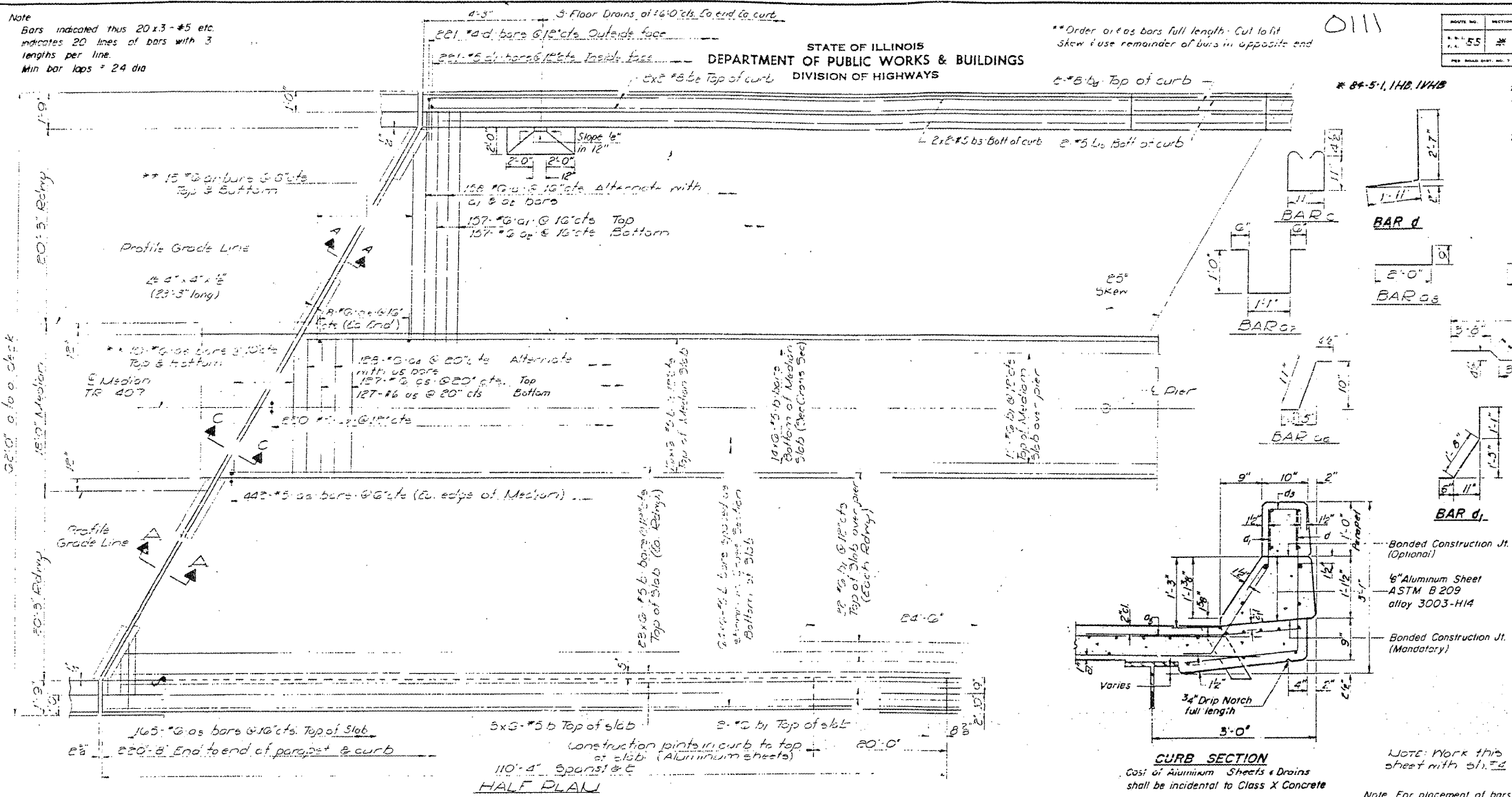


Note

Bars indicated thus 20x3-#5 etc. indicates 20 lines of bars with 3 lengths per line.
Min bar laps = 24 dia

STATE OF ILLINOIS
DEPARTMENT OF PUBLIC WORKS & BUILDINGS
DIVISION OF HIGHWAYS

PROJECT NO.	SECTION	COUNTY	TOTAL SHEETS	SHEET NO.
55	#	SANGAMON #40	107	14 SHEETS



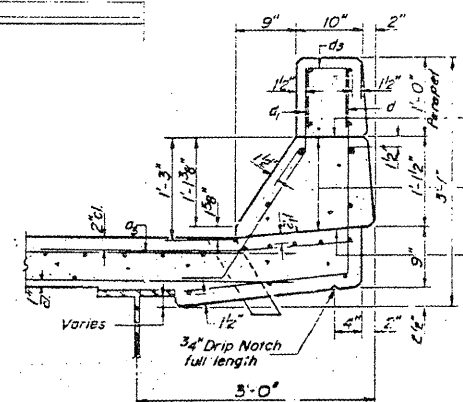
BILL OF MATERIAL

Bar	No.	Size	Length	Shape
C1	316	#6	24'-0"	
C2	572	#6	23'-9"	
C3	514	#6	24'-3"	
C4	530	#6	4'-0"	
C5	726	#6	15'-0"	
C6	274	#6	15'-1"	
C7	654	#5	2'-0"	
C8	220	#5	4'-1"	
C9	118	#6	2'-9"	
D	272	#5	33'-0"	
D1	63	#6	49'-0"	
D2	76	#8	42'-0"	
D3	76	#5	42'-9"	
D4	6	#8	19'-9"	
D5	6	#5	19'-9"	
E	76	#4	3'-0"	
F	448	#4	4'-0"	
F1	448	#5	3'-0"	
M3	4	#5	15'-0"	

Reinforcement Bars Lbs 36,190
Class X Concrete Cu Yds 380.2
Structural Steel Lbs 4.5
Stud Shear Conns. Each 2808

Weight of bearing assemblies with lead plates and anchor bolts are included as structural steel
Est Wt = 11,640 lbs.

Parapet reinforce- ment & Class X Concrete are billed on sheet #5.

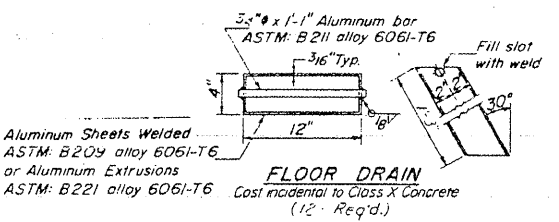


CURB SECTION

Cost of Aluminum Sheets & Drains shall be incidental to Class X Concrete

NOTE: Work this sheet with #1, #2

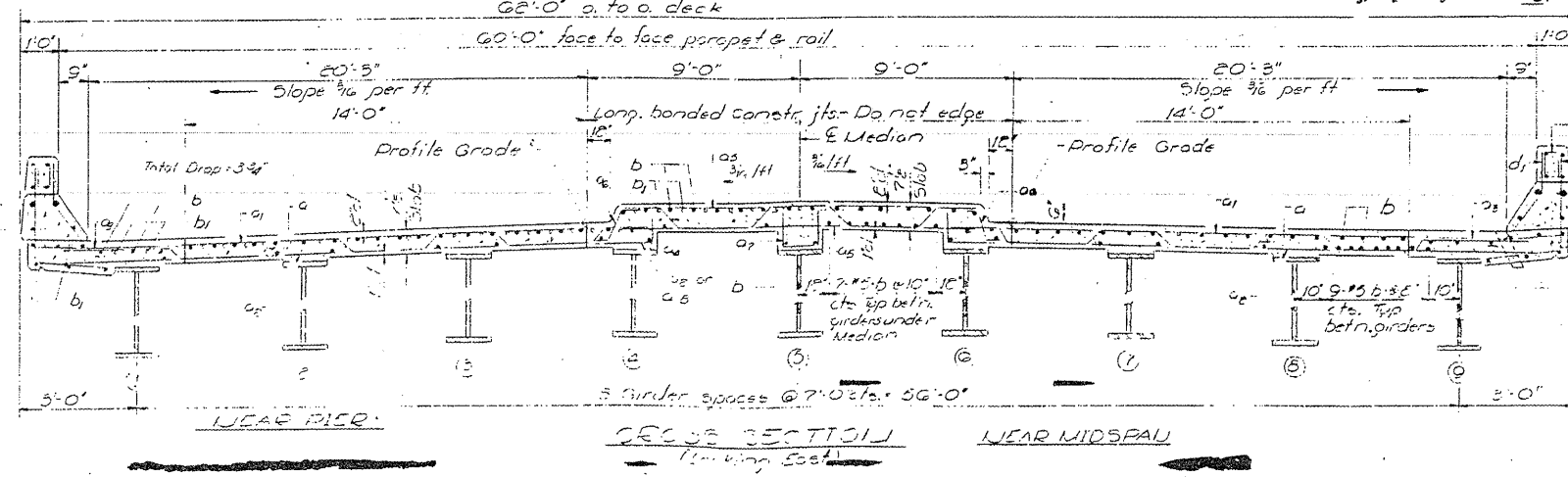
Note: For placement of bars C1, C2 and C3 see sheet #5.



FLOOR DRAIN

Aluminum Sheets Welded ASTM B209 alloy 6061-T6 or Aluminum Extrusions ASTM B221 alloy 6061-T6
Cost incidental to Class X Concrete (12" Req'd.)

DESIGNED	J. Kuper	EXAMINED	January 27 1968
CHECKED	R.H.G.K.	PASSED	
DRAWN	SCHWELLER	APPROVED	
CHECKED	R.G.K.		



SUBSTRUCTURE

MAIN SPAN
F&I, ET 55 SEC. 64-3-118
E. 241401
DIA 419 + 29.01

FOR INFORMATION ONLY

EXISTING PLANS, SN 084-0111
VARIOUS ROUTES
D6REHAB BDGE PAINTING 2012
MENARD, SANGAMON COUNTIES