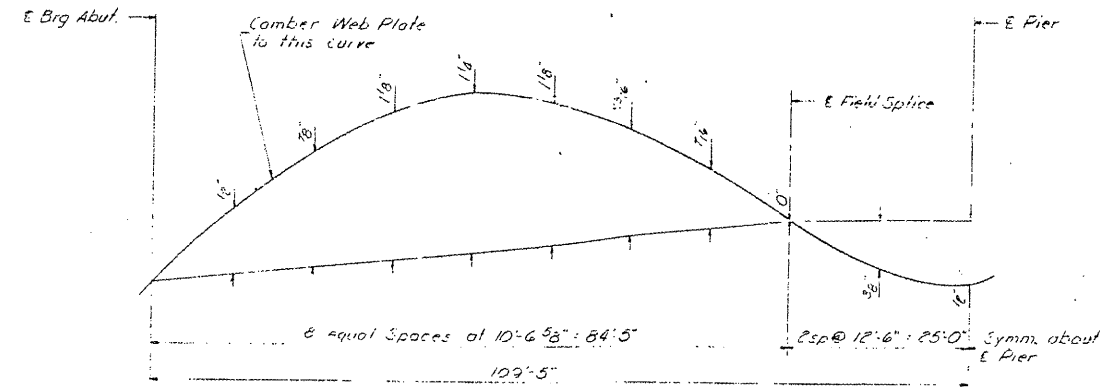


STATE OF ILLINOIS
DEPARTMENT OF PUBLIC WORKS & BUILDINGS
DIVISION OF HIGHWAYS

0111

PROJECT NO.	SECTION	COUNTY	TOTAL SHEETS	SHEET NO.
55	#	SANGAMON #60	114	16

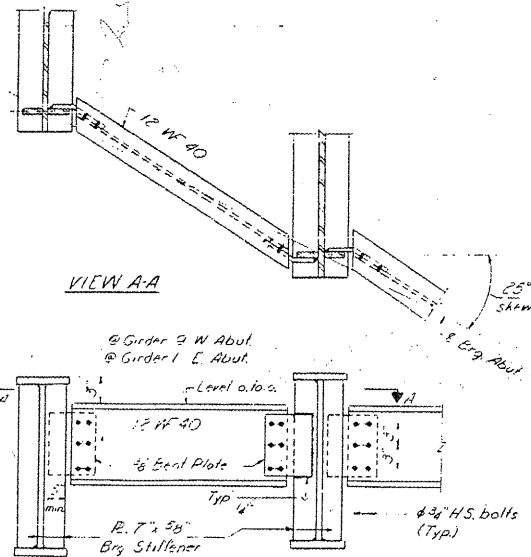
#4-5-1, 1HB, 1VNB



CAMBER DIAGRAM
Note: Top & Bottom of Girder webs shall be cut to camber curves.

TOP OF GIRDER WEB ELEVATIONS

Location	1	2	3	4	5	6	7	8	9
E Brg W. Abut.	628.54	628.65	628.75	628.81	628.80	628.79	628.68	628.57	628.45
E Field Splice #1	628.63	628.74	628.84	628.92	628.91	628.90	628.83	628.72	628.60
E Brg Pier	628.58	628.69	628.79	628.87	628.86	628.85	628.79	628.68	628.56
E Field Splice #2	628.61	628.72	628.82	628.91	628.90	628.89	628.84	628.73	628.61
E Brg. E. Abut.	628.45	628.56	628.66	628.80	628.79	628.78	628.74	628.63	628.51

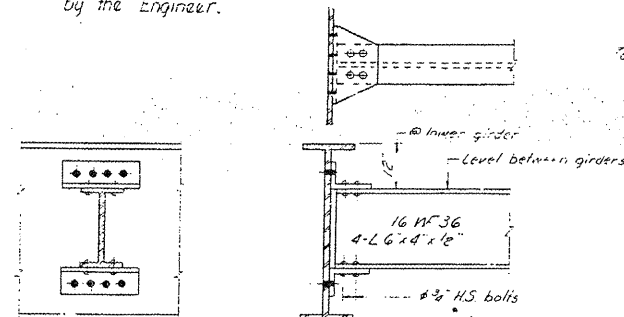


VIEW A-A

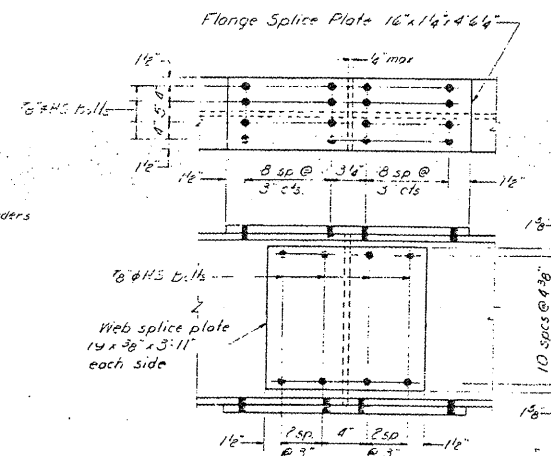
@ Girder 2 W. Abut.
@ Girder 1 E. Abut.

DIAPHRAGM D
1/2" Required

Note: Diaphragm connections may be adapted to shop welding subject to approval by the Engineer.



DIAPHRAGM D1
7/8" Required



SPlice

STRESS TABLE

	Moments - kips		Reactions - kips	
	40 Sp. 1	Pier	Abut.	Pier
D.L.	681.7	1635.5	35.9	131.6
S.D.L.	235.5	377.2	11.3	36.3
L.L.	889.8	796.1	41.0	71.5
Imp.	189.5	169.6	8.8	15.2
Total	1996.5	2978.4	97.0	254.6

SDL = Superimposed Dead Load

Properties
At Midspan (Composite): $I = 52,440 \text{ in}^4$ $S_B = 1380.8 \text{ in}^3$ $S_T = 4359 \text{ in}^3$
At Pier: $I = 50,090 \text{ in}^4$ $S_B = 1908.6 \text{ in}^3$
At Midspan (Non-comp.): $I = 29,124 \text{ in}^4$ $S_B = 1028.1 \text{ in}^3$ $S_T = 617.5 \text{ in}^3$

DESIGNED	S. E. Lindsey	EXAMINED	[Signature]
CHECKED	R. G. K.	PASSED	[Signature]
DRAWN	S. E. Lindsey IK	APPROVED	[Signature]
CHECKED	R. G. K.		

STRUCTURAL STEEL DETAILS
FAL RT. 55 SEC 84-5-1HB
SANGAMON COUNTY

FOR INFORMATION ONLY

EXISTING PLANS, SN 084-0111
VARIOUS ROUTES
D6REHAB BDGE PAINTING 2012
MENARD, SANGAMON COUNTIES