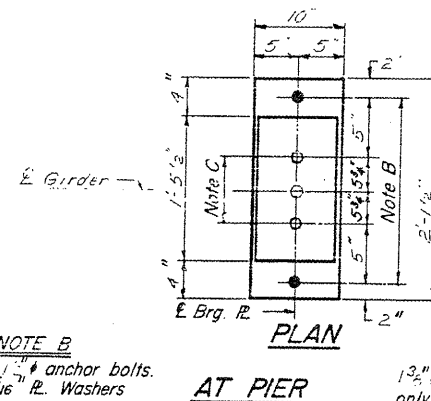
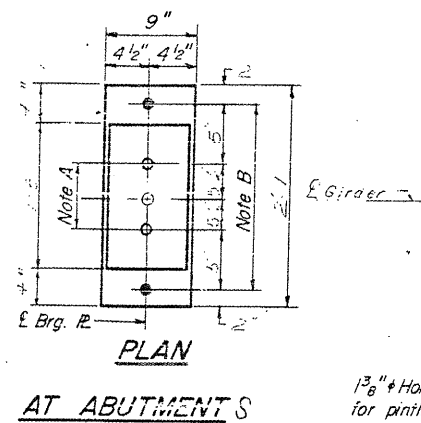
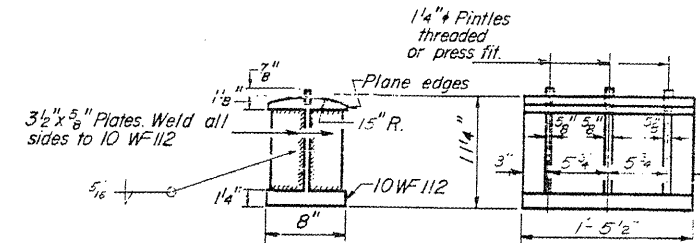
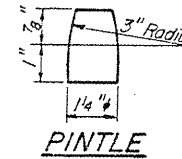
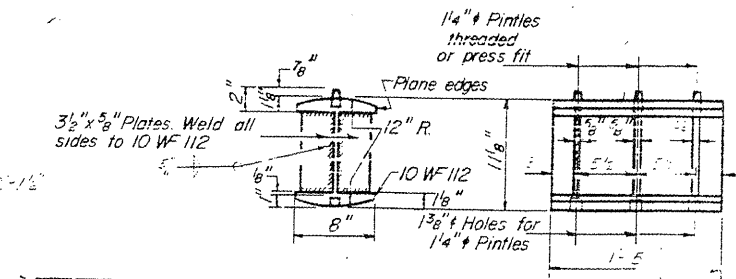
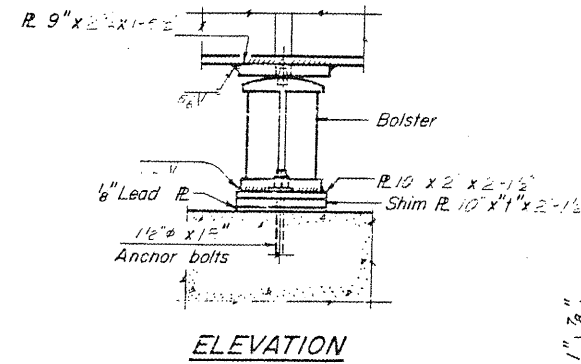
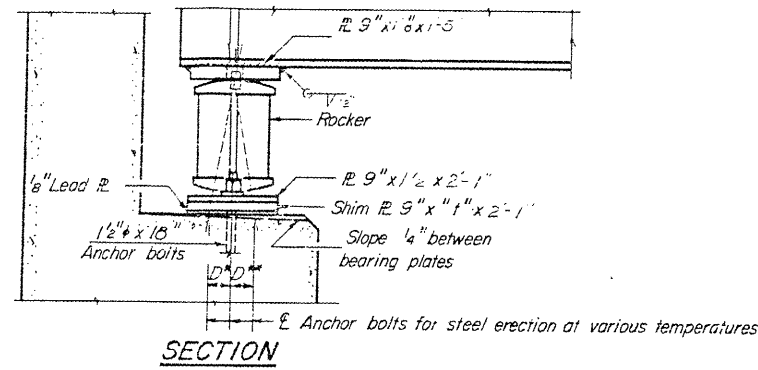


STATE OF ILLINOIS  
DEPARTMENT OF PUBLIC WORKS & BUILDINGS  
DIVISION OF HIGHWAYS

ROUTE NO.	55	COUNTY	SANGAMON	TOTAL SHEETS	160	SHEET NO.	115	SHEET NO. / OF SHEETS	16 / 160
-----------	----	--------	----------	--------------	-----	-----------	-----	-----------------------	----------



NOTE A  
1 3/8" Holes - 1" deep in top R.  
for pintles. in read or press fit  
pintles into bottom R.

NOTE B  
2" Holes for 1/2" anchor bolts.  
3" x 3" x 5/16" R. Washers  
under nut.

NOTE C  
1 3/8" Holes 1" deep in top R.  
only for 1/4" pintles.

NOTES ON SETTING OF ANCHOR BOLTS AT EXP. BRGS.

- a) D\* (Side of brg. away from fixed brg.)  
D\* = 1/8" per each 100' of expansion for every 15° fall below the normal temp. of 50°F.
- D\*\* (Side of brg. toward fixed brg.)  
D\*\* = 1/8" per each 100' of expansion for every 15° rise above the normal temp. of 50°F.
- b) After girders have been erected and dimensions D\* or D\*\* determined, holes shall be drilled and anchor bolts shall be grouted in place. All other anchor bolts shall be built into the masonry.

BEARING ASSEMBLY DETAILS

TABLE OF " + " DIMENSIONS

Location	Girder	1	2	3	4	5	6	7	8	9
E. Brg. W. Abut.		-	-	-	-	5/8"	1/2"	-	-	-
E. Brg. Pier		1/4"	-	-	1/4"	1/8"	-	-	-	-
E. Brg. E. Abut.		-	-	-	-	5/8"	1/2"	-	-	-

DESIGNED	JAN 27 1963
CHECKED	EXAMINED
DRAWN	PASSED
CHECKED	APPROVED

BEARING DETAILS

FOR INFORMATION ONLY

EXISTING PLANS, SN 084-0111  
VARIOUS ROUTES  
D6REHAB BDGE PAINTING 2012  
MENARD, SANGAMON COUNTIES