

1-20-2012 LETTING ITEM 089

STATE OF ILLINOIS
DEPARTMENT OF TRANSPORTATION
DIVISION OF HIGHWAYS

**PROPOSED
CONTRACT MAINTENANCE**

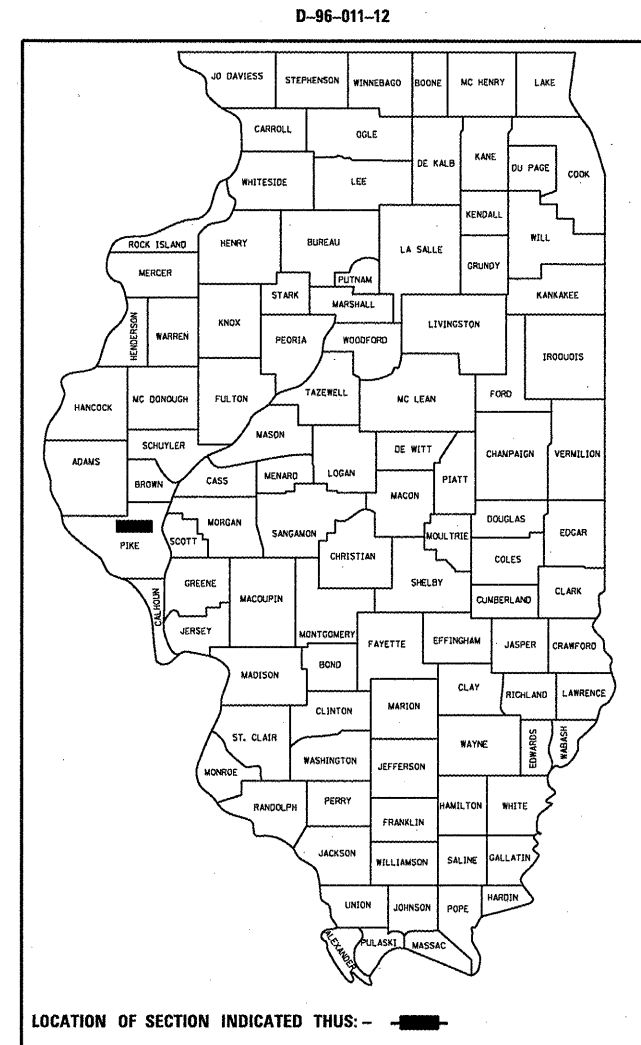
VARIOUS
SECTION D6 SHOULDER REPAIR 2012

PIKE COUNTY

C-96-011-12

RTE.	SECTION	COUNTY	TOTAL SHEETS	SHEET NO.
VAR. D6 SHOULDER REPAIR 2012		PIKE	6	1
FED. ROAD DIST. NO.	ILLINOIS	CONTRACT NO. 72F03		

FOR INDEX OF SHEETS, SEE SHEET NO. 2



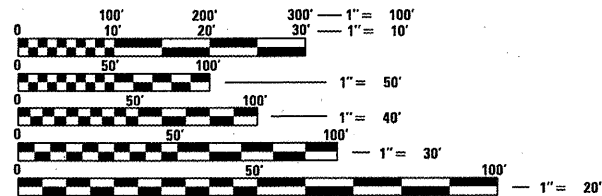
STA. EQ. 1584 + 24.98bk =
775 + 49.10ah

STA. EQ. 951 + 88.89bk =
951 + 83.98ah

ADT = 5,300 (1,750)

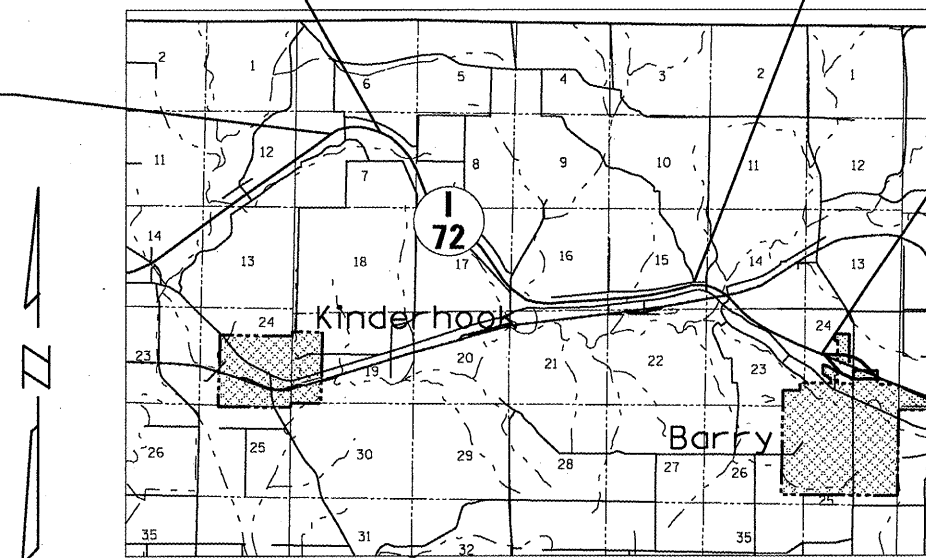
BEGIN PROJECT
STA. 1527 + 70.00

END PROJECT
STA. 995 + 00.00



FULL SIZE PLANS HAVE BEEN PREPARED USING STANDARD ENGINEERING SCALES. REDUCED SIZED PLANS WILL NOT CONFORM TO STANDARD SCALES. IN MAKING MEASUREMENTS ON REDUCED PLANS, THE ABOVE SCALES MAY BE USED.

J.U.L.I.E.
JOINT UTILITY LOCATION INFORMATION FOR EXCAVATION
1-800-892-0123
OR 811



PLAN AND CONTRACT TECHNICIAN
TIMOTHY SHARP (217)782-7743

CONTRACT NO. 72F03

GROSS LENGTH = 27,610.79 FT. = 5.229 MILES
NET LENGTH = 2,020 FT. = 0.383 MILE

STATE OF ILLINOIS
DEPARTMENT OF TRANSPORTATION
DIVISION OF HIGHWAYS

SUBMITTED NOVEMBER 9, 20 11
Roger Z. Orndorff
DEPUTY DIRECTOR OF HIGHWAYS, REGION ENGINEER

December 9, 20 11
Scott E. Stitt, P.E.
ENGINEER OF DESIGN AND ENVIRONMENT

December 9, 20 11
William R. Fleisher
DIRECTOR OF HIGHWAYS, CHIEF ENGINEER

PRINTED BY THE AUTHORITY
OF THE STATE OF ILLINOIS

INDEX

- 1 COVER
- 2 INDEX/STANDARDS/SIGNATURES
- 3 QUANTITIES
- 4 LOCATION MAP
- 5 TYPICAL SECTIONS
- 6 SCHEDULES

STANDARDS

- 482001-02
- 601001-04
- 701101-02
- 701400-05
- 701401-06
- 701901-02

STATE OF ILLINOIS DEPARTMENT OF TRANSPORTATION DIVISION OF HIGHWAYS DISTRICT 6	
EXAMINED <u>Oct 31</u> 20 <u>11</u>	<u><i>air walk</i></u> ENGINEER OF OPERATIONS
EXAMINED <u>OCT 28</u> 20 <u>11</u>	<u><i>Jimmy J. [Signature]</i></u> ENGINEER OF PROJECT IMPLEMENTATION
EXAMINED <u>Nov. 1</u> 20 <u>11</u>	<u><i>ARM L.L.</i></u> ENGINEER OF PROGRAM DEVELOPMENT

INDEX/STANDARDS/SIGNATURES
VARIOUS
SECTION D6 SHOULDER REPAIR 2012
PIKE COUNTY

S U M M A R Y O F Q U A N T I T I E S

CODE NO.	ITEM	UNIT	100% STATE
			0021
			TOTAL QTY
20200100	EARTH EXCAVATION	CU YD	375
35101800	AGGREGATE BASE COURSE, TYPE B 6"	SQ YD	2,245
44004250	PAVED SHOULDER REMOVAL	SQ YD	2,245
48203029	HOT-MIX ASPHALT SHOULDERS, 8"	SQ YD	2,245
60100060	CONCRETE HEADWALLS FOR PIPE DRAINS	EACH	9
60107600	PIPE UNDERDRAINS 4"	FOOT	2,020
60108100	PIPE UNDERDRAINS 4" (SPECIAL)	FOOT	180
67100100	MOBILIZATION	L SUM	1
70100800	TRAFFIC CONTROL AND PROTECTION, STANDARD 701401	L SUM	1
70103815	TRAFFIC CONTROL SURVEILLANCE	CAL DA	4
Z0040530	^{UNDER} PIPE DRAIN REMOVAL	FOOT	2,020

QUANTITIES
VARIOUS
SECTION D6 SHOULDER REPAIR 2012
PIKE COUNTY

STA. EQ. 1584+24.98bk=
775+49.10ah

STA. EQ. 951+88.89bk=
951+83.98ah

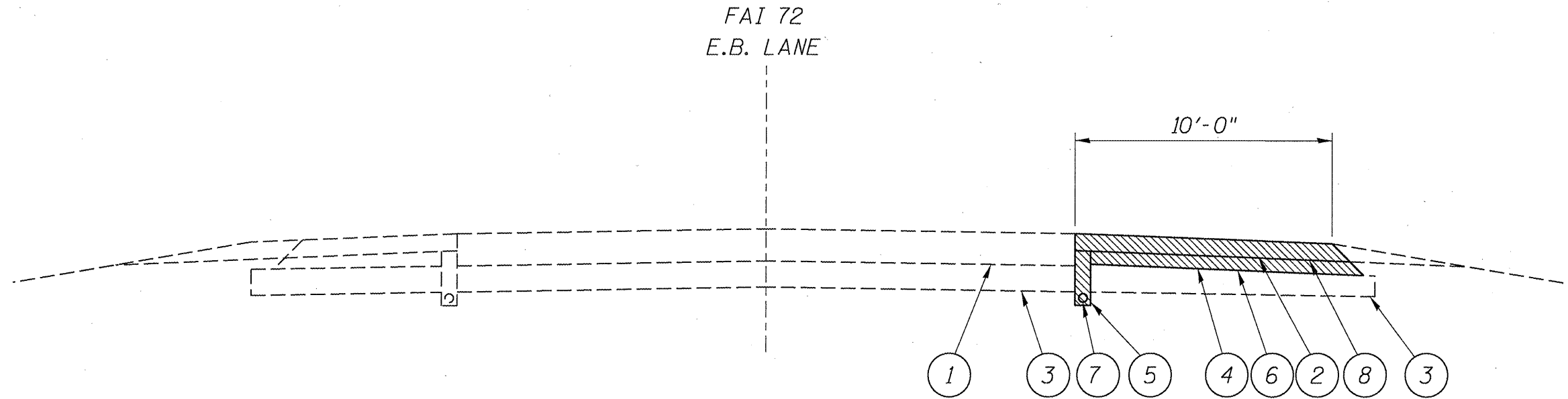
BEGIN PROJECT
STA. 1527+70.0



LOCATION #1 - STA. 1527+70.00 TO 1538+00.00
LOCATION #2 - STA. 1545+60.00 TO 1553+00.00
LOCATION #3 - STA. 992+50.00 TO 995+00.00

END PROJECT
STA. 995+00.00

PLAN
VARIOUS
SECTION D6 SHOULDER REPAIR 2012
PIKE COUNTY



STA. 1527+70.00 TO 1538+00.00
STA. 1545+60.00 TO 1553+00.00
STA. 992+50.00 TO 995+00.00

LEGEND

- 1 - EXIST. BIT. CONC. PAVEMENT 15"
- 2 - EXIST. BIT. SHOULDERS 8" (T.B.R.)
- 3 - EXIST. LIME MODIFIED SOILS
- 4 - EXIST. GRANULAR SUB-BASE (T.B.R.)
- 5 - EXIST. PIPE UNDERDRAINS (T.B.R.)
- 6 - PROP. AGGREGATE BASE COURSE, TYPE B 6"
- 7 - PROP. PIPE UNDERDRAINS 4"
- 8 - PROP. HOT-MIX ASPHALT SHOULDERS, 8"

(T.B.R.) - TO BE REMOVED

TYPICAL SECTIONS
VARIOUS
SECTION D6 SHOULDER REPAIR 2012
PIKE COUNTY

PIPE UNDERDRAIN 4"	
STATION	LENGTH
RT. STA. 1527+70 TO 1531+14	344 FT
RT. STA. 1531+14 TO 1534+58	344 FT
RT. STA. 1534+58 TO 1538+00	342 FT
RT. STA. 1545+60 TO 1549+30	370 FT
RT. STA. 1549+30 TO 1553+00	370 FT
RT. STA. 992+50 TO 995+00	250 FT
TOTALS	2,020 FT

PIPE UNDERDRAIN 4" (SPECIAL)		
STATION	OFFSET	LENGTH
RT. STA. 1527+70	20 FT	20 FT
RT. STA. 1531+14	20 FT	20 FT
RT. STA. 1534+58	20 FT	20 FT
RT. STA. 1538+00 *	20 FT	20 FT
RT. STA. 1545+60	20 FT	20 FT
RT. STA. 1549+30	20 FT	20 FT
RT. STA. 1553+00 *	20 FT	20 FT
RT. STA. 992+50 *	20 FT	20 FT
RT. STA. 995+00	20 FT	20 FT
TOTALS		180 FT

* TO BE CONNECTED TO EXIST.
PIPE UNDERDRAIN

NOTES:

STATIONS ARE APPROXIMATE.

CONCRETE HEADWALLS FOR PIPE DRAINS	
STATION	OFFSET
RT. STA. 1527+70	20 FT
RT. STA. 1531+14	20 FT
RT. STA. 1534+58	20 FT
RT. STA. 1538+00 *	20 FT
RT. STA. 1545+60	20 FT
RT. STA. 1549+30	20 FT
RT. STA. 1553+00 *	20 FT
RT. STA. 992+50 *	20 FT
RT. STA. 995+00	20 FT

* TO BE CONNECTED TO EXIST.
PIPE UNDERDRAIN

MIXTURE REQUIREMENTS		
THE FOLLOWING MIXTURE REQUIREMENTS ARE APPLICABLE FOR THIS PROJECT		
MIXTURE USE(S):	H.M.A. SHLD, TOP 2"	H.M.A. SHLD, LOWER LIFTS
AC/PG	PG 64-22	PG 58-22
DESIGN AIR VOIDS:	4.0% @ N DESIGN = 50	2.0% @ N DESIGN = 30
MIXTURE COMP:	IL 9.5 OR 12.5	BAM
FRICTION AGG:	MIX C	N/A

SCHEDULES
VARIOUS
SECTION D6 SHOULDER REPAIR 2012
PIKE COUNTY