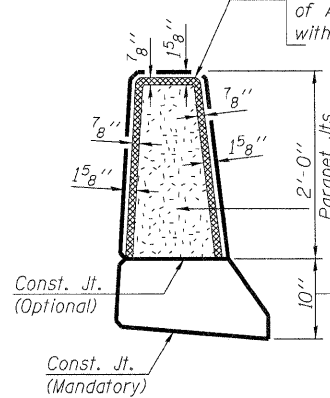


**MINIMUM BAR LAP**  
(Parapet)  
#4 bar = 2'-0"  
#8 bar = 5'-2"

**INSIDE ELEVATION OF PARAPET**

Non-staining gray one component non-sag elastomeric gun grade polyurethane sealant meeting the requirements of ASTM C-920, Type S, Grade NS, Class 25, use T with a 5/8" backer rod.

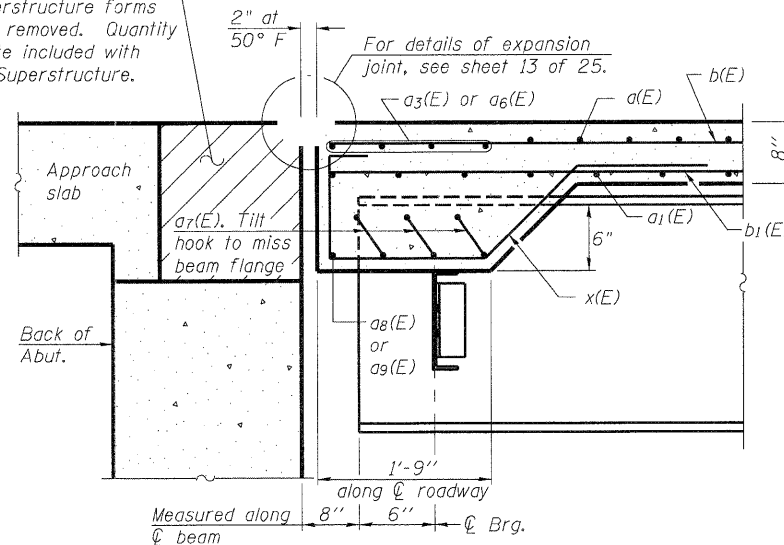


**PARAPET JOINT DETAILS**

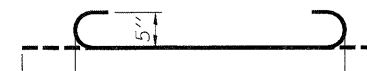
Notes:

Drains shall be located clear of all diaphragms.  
The exterior surfaces of the floor drains shall be painted with the finish coat as specified in the special provisions for Cleaning and Painting New Metal Structures. The exterior surfaces of the drains shall be cleaned according to the Society of Protective Coatings Spec. SSPC-SP1 prior to painting.  
Fiberglass pipe shall conform to ASTM D 2996, with short-time rupture strength hoop tensile stress of 30,000 p.s.i. minimum.  
Galvanize clamping device according to AASHTO M232. Cost of clamping device and galvanizing is included with Floor Drains.

Hatched area to be poured after superstructure forms have been removed. Quantity of concrete included with Concrete Superstructure.

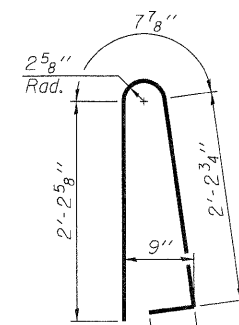


**SECTION A-A**

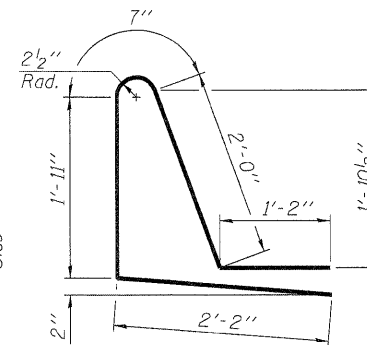


**a7(E) BAR\***

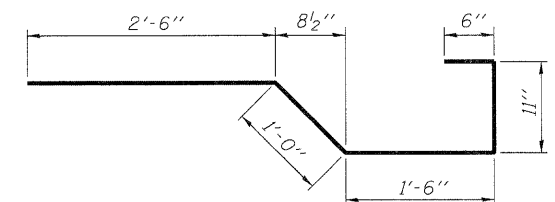
\* Cut a7(E) to fit at stage construction joint.



**BAR d(E)**



**BAR d1(E)**



**BAR x(E)**

**SUPERSTRUCTURE BILL OF MATERIAL**

Bar	No.	Size	Length	Shape
a(E)	212	#5	18'-7"	—
a1(E)	139	#5	18'-0"	—
a2(E)	214	#6	6'-6"	—
a3(E)	8	#5	19'-3"	—
a4(E)	212	#5	15'-9"	—
a5(E)	139	#5	15'-2"	—
a6(E)	8	#5	22'-8"	—
a7(E)	30	#5	8'-0"	—
a8(E)	2	#5	18'-6"	—
a9(E)	2	#5	22'-0"	—
b(E)	152	#5	30'-8"	—
b1(E)	64	#6	26'-0"	—
b2(E)	155	#5	25'-0"	—
d(E)	250	#5	5'-7"	—
d1(E)	250	#5	7'-10"	—
e(E)	56	#4	17'-7"	—
e1(E)	4	#8	35'-5"	—
e2(E)	4	#4	35'-5"	—
e3(E)	42	#4	14'-1"	—
e4(E)	2	#8	42'-9"	—
e5(E)	4	#4	22'-5"	—
x(E)	34	#5	6'-5"	—
Reinforcement Bars, Epoxy Coated	Pound		32,120	
Concrete Superstructure Bridge Deck (Shrinkage-Comp Concrete)	Cu. Yds.		38.6	
	Cu. Yds.		105	

Bars indicated thus 1 x 3 - #8 etc. indicates 1 line of bars with 3 lengths per line.

PRINTED DATE: 12/5/2011  
FILE NAME: C:\projects\148\148.dwg  
DESIGNED: SMA  
CHECKED: DF  
DRAWN: ADG  
CHECKED: DF

S-D  
7-1-10  
DESIGNED - SMA  
CHECKED - DF  
DRAWN - ADG  
CHECKED - DF

**ESI** CONSULTANTS, LTD  
753 WINDSOR ROAD  
CHARLESTON, IL 61920  
(217) 548-1900  
WWW.ESI-CONSULTANTS.LTD.COM  
ILLINOIS DEPARTMENT OF PROFESSIONAL REGULATION REGISTRATION #184-003685

STATE OF ILLINOIS  
DEPARTMENT OF TRANSPORTATION

SUPERSTRUCTURE DETAILS  
STRUCTURE NO. 096-0074

SHEET NO. 10 OF 24 SHEETS

F.A.P. RTE.	SECTION	COUNTY	TOTAL SHEETS	SHEET
823	(22,B2A)B-1 & (22,B2B)B-1	Wayne	85	24
CONTRACT NO. 74216			ILLINOIS FEDERAL AID PROJECT	