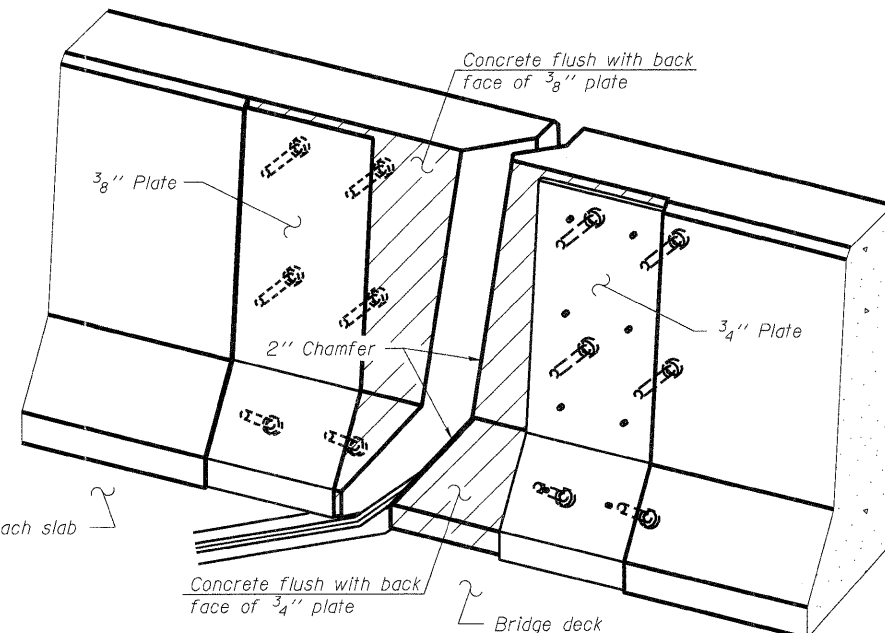
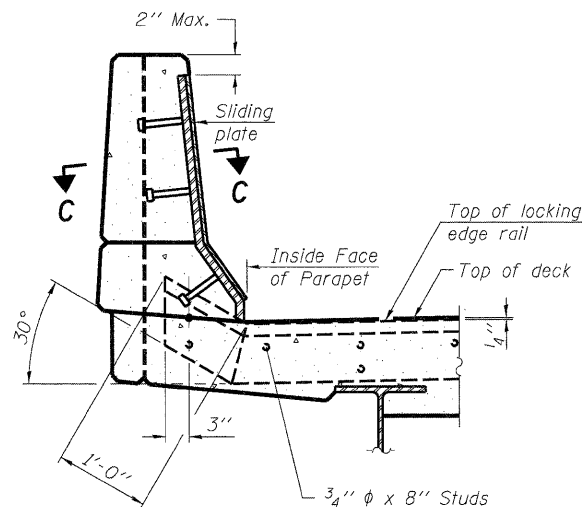
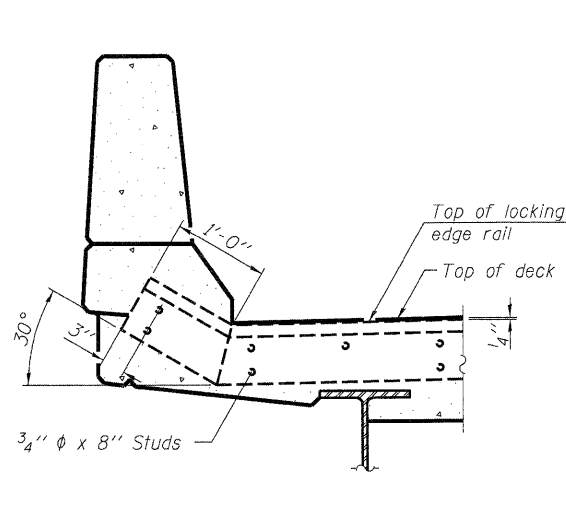


**TYPICAL END TREATMENT AT SIDEWALK OR MEDIAN**

Shorter plates with a single row of studs at 12" cts. may be necessary on medians which are shallower than 9". See manufacturer's recommendation.



**Notes:**

The strip seal shall be made continuous and shall have a minimum thickness of  $\frac{1}{4}$ ". The configuration of the strip seal shall match the configuration of the Locking Edge Rails. Open or "webbed" strip seal gland configurations are not permitted. The gland shall be sized for a maximum rated movement of 4 inches.

The Locking Edge Rails depicted are conceptual only, except for the minimum dimensions shown. The actual configuration of the Locking Edge Rails and matching strip seal may vary from manufacturer to manufacturer. Flanged edge rails will not be allowed. Locking Edge Rails may be spliced at slope discontinuities.

The manufacturer's recommended installation methods shall be followed.

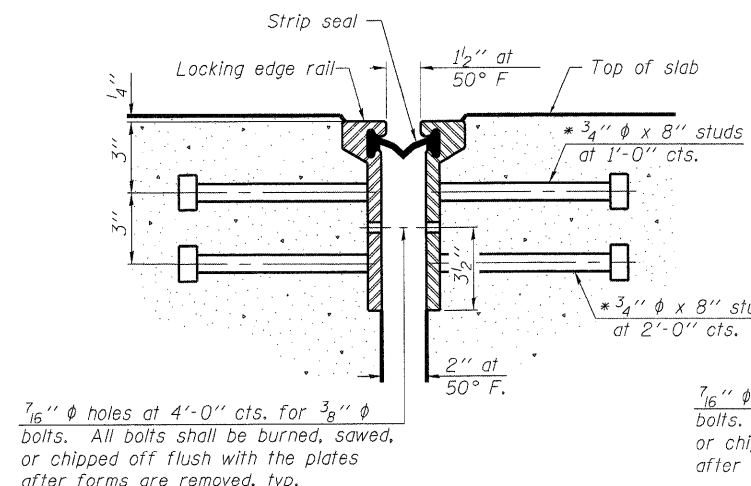
The joint opening and deck dimensions detailed on the superstructure are based on a rolled rail expansion joint. If the Contractor elects to use the welded rail expansion joint, the opening and deck dimensions shall be modified according to the dimensions detailed on this sheet. Required modifications shall be made at no additional cost to the State.

All steel components shall be galvanized after fabrication according to Article 520.03 of the Standard Specifications.

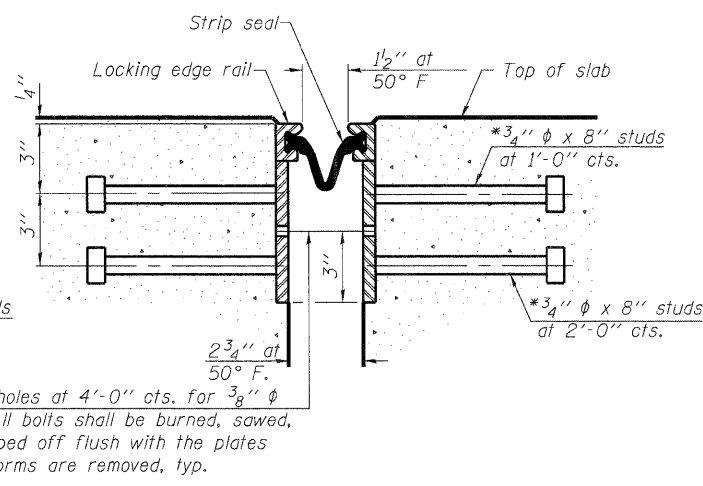
Maximum space between rail segments at stage lines shall be  $\frac{3}{16}$ ", sealed with a suitable sealant.

Parapet plates and anchorage studs for skews  $> 30^\circ$  included in the cost of Preformed Joint Strip Seal.

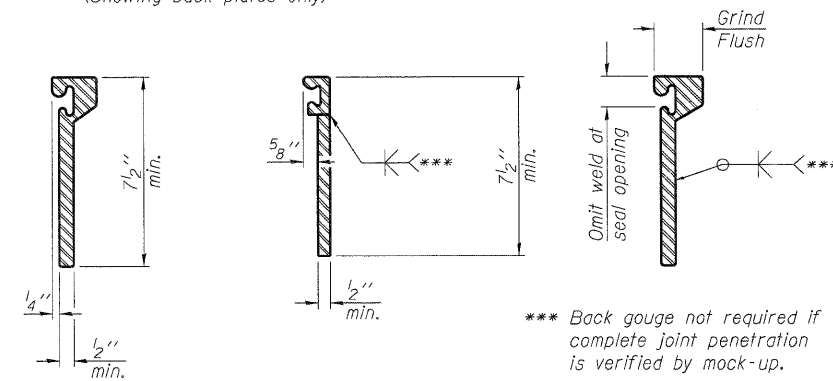
PRINTED DATE: 12/5/2011  
FILE NAME: I:\projects\det\p4b 148, item 25 - 47\various design\work order\_06\cond\drawings\sheet\27-106.PrefJmJ455.dgn



$\frac{7}{16}$ "  $\phi$  holes at 4'-0" cts. for  $\frac{3}{8}$ "  $\phi$  bolts. All bolts shall be burned, sawed, or chipped off flush with the plates after forms are removed, typ.



$\frac{7}{16}$ "  $\phi$  holes at 4'-0" cts. for  $\frac{3}{8}$ "  $\phi$  bolts. All bolts shall be burned, sawed, or chipped off flush with the plates after forms are removed, typ.



\*\*\* Back gouge not required if complete joint penetration is verified by mock-up.

The inside of the locking edge rail groove shall be free of weld residue.  
Rolled rail shown, welded rail similar.

**BILL OF MATERIAL**

Item	Unit	Total
Preformed Joint Strip Seal	Foot	83

**LOCKING EDGE RAILS**

EJ-SSJ 7-1-10

DESIGNED - DF
CHECKED - ADG
DRAWN - ADG
CHECKED - DF

**ESI CONSULTANTS, LTD**  
765 WINDSOR ROAD  
CHARLESTON, IL 61920  
(217) 348-1900  
WWW.ESICONSULTANTS.LTD.COM  
ILLINOIS DEPARTMENT OF PROFESSIONAL REGULATION REGISTRATION #194-003685

STATE OF ILLINOIS  
DEPARTMENT OF TRANSPORTATION

PREFORMED JOINT STRIP SEAL  
STRUCTURE NO. 096-0074  
SHEET NO. 13 OF 24 SHEETS

F.A.P. RTE. 823	SECTION (22,B2A)B-1 & (22,B2B)B-1	COUNTY Wayne	TOTAL SHEETS 85	SHEET 27
			CONTRACT NO. 74216	
ILLINOIS FEDERAL AID PROJECT				