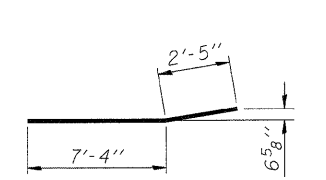


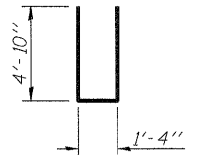
BAR h₁(E)

ANCHOR BOLT LAYOUT



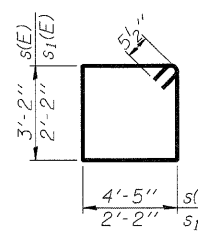
BAR h₂(E)

BAR h₄(E)



BAR n(E)

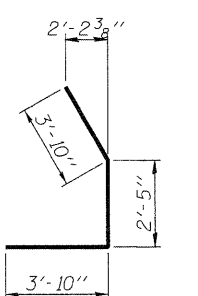
BAR n₁(E)



BARS s(E) & s₁(E)

BAR s₂(E)

BAR u(E)

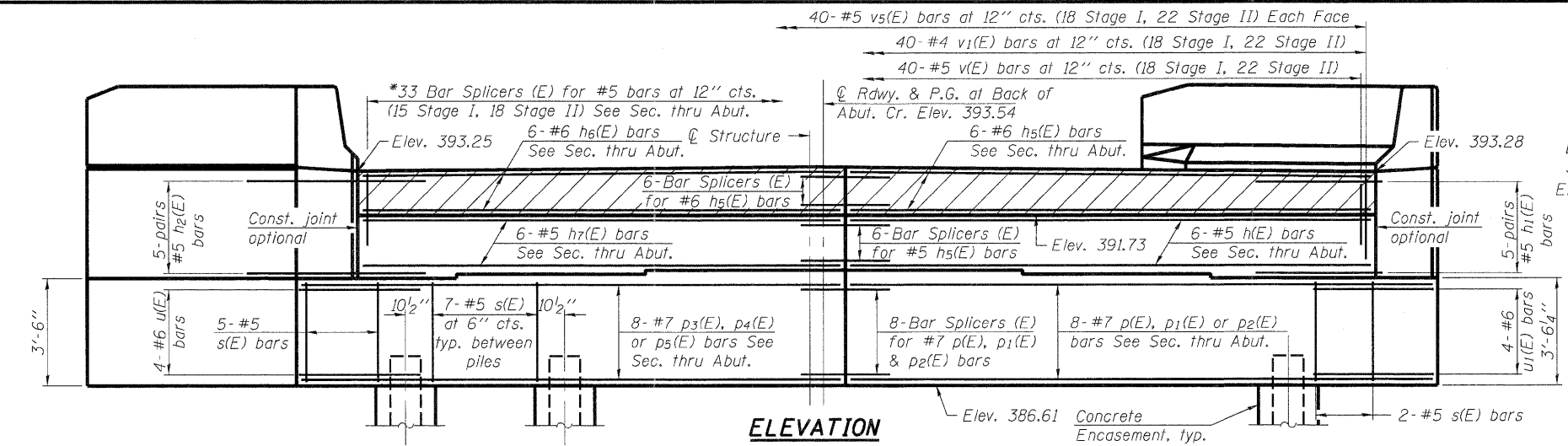


BAR v₁(E)

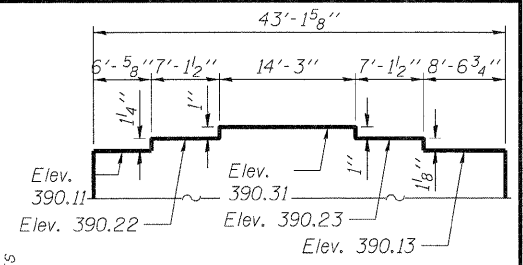
BAR v₃(E)

BAR v₄(E)

PILE DATA
 Type: Steel HP 14x73
 Nominal Required Bearing: 424 kips
 Factored Resistance Available: 212 kips
 Est. Length: 47'
 No. Production Piles: 8
 No. Test Piles: 1

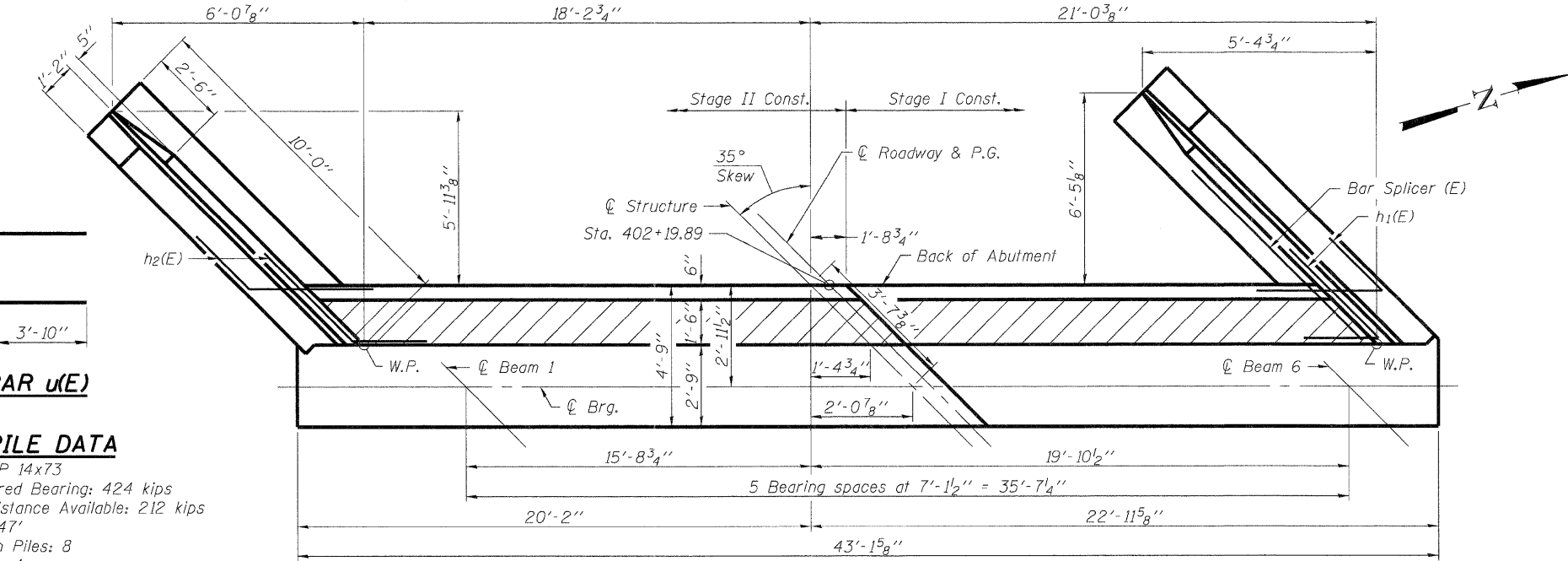


ELEVATION

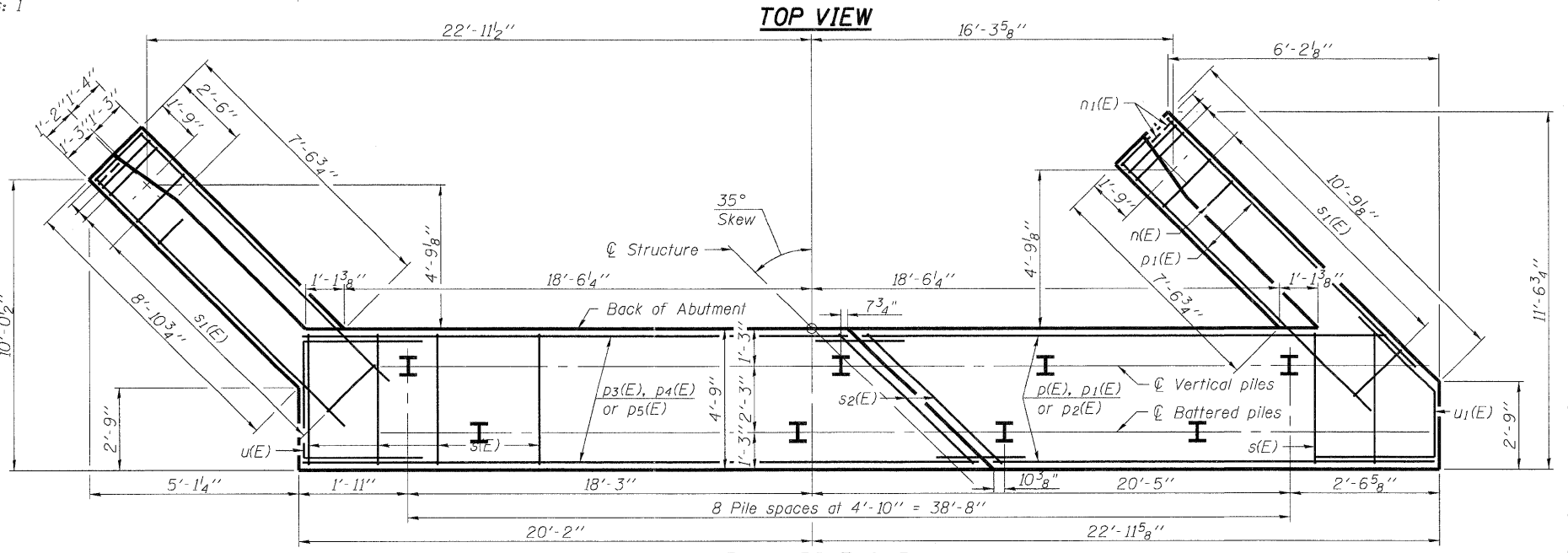


STEP DETAIL

Note:
 Step dimensions are along front face of abutment.



TOP VIEW



PLAN-PILE CAP

ABUTMENT BILL OF MATERIAL

Bar	No.	Size	Length	Shape
h(E)	6	#5	17'-9"	
h ₁ (E)	6	#5	7'-3"	
h ₂ (E)	6	#5	7'-3"	
h ₃ (E)	20	#4	9'-8"	
h ₄ (E)	12	#4	9'-9"	
h ₅ (E)	6	#6	17'-9"	
h ₆ (E)	6	#6	21'-2"	
h ₇ (E)	6	#5	21'-2"	
n(E)	16	#6	11'-0"	
n ₁ (E)	12	#6	5'-6"	
p(E)	3	#7	18'-2"	
p ₁ (E)	2	#7	19'-10"	
p ₂ (E)	3	#7	21'-4"	
p ₃ (E)	3	#7	23'-2"	
p ₄ (E)	2	#7	22'-9"	
p ₅ (E)	3	#7	21'-3"	
s(E)		#5	16'-1"	
s ₁ (E)	22	#5	9'-7"	
s ₂ (E)	2	#5	18'-1"	
u(E)	4	#6	12'-0"	
u ₁ (E)	4	#6	10'-1"	
v(E)	40	#4	3'-7"	
v ₁ (E)	40	#4	3'-3"	
v ₂ (E)	22	#6	5'-9"	
v ₃ (E)	22	#6	5'-0"	
v ₄ (E)	16	#6	5'-11"	
v ₅ (E)	80	#5	6'-1"	

Structure Excavation	Cu. Yd.	116.4
Concrete Structures	Cu. Yd.	45.5
Reinforcement Bars, Epoxy Coated	Pound	4580
Furnishing Steel Piles, HP 14x73	Foot	376
Driving Piles	Foot	376
Test Pile Steel 14x73	Each	1
Concrete Encasement	Cu. Yd.	4.4
Concrete Sealer	Sq. Ft.	421

For details of Bar Splicers, see sheet 23 of 24.
 For details of piles and Concrete Encasement, see sheet 22 of 24.

* Align Bar Splicers (E) parallel to approach slab reinforcement.

Notes:
 Concrete Sealer shall be applied to all exposed surfaces of backwall, bridgeseat and front face of pile cap.

PRINTED DATE: 12/15/2011
 FILE NAME: \\snp\projects\148\148.dwg
 PLOT DATE: 12/15/2011
 PLOT TIME: 10:48:14 AM
 PLOT SCALE: 1.0000
 PLOT SHEET: 19 OF 24
 PLOT SHEET NO.: 19 OF 24 SHEETS
 PLOT SHEET TITLE: EAST ABUTMENT STRUCTURE NO. 096-0074

A-1-L (>30°) 7-1-10

DESIGNED	-	ADG
CHECKED	-	DF
DRAWN	-	ADG
CHECKED	-	DF

ESI CONSULTANTS, LTD
 752 WINDSOR ROAD
 CHARLESTON, IL 61920
 (217) 346-1800
 WWW.ESI-CONSULTANTS.LTD.COM
 ILLINOIS DEPARTMENT OF PROFESSIONAL REGULATION REGISTRATION #164-003685

STATE OF ILLINOIS
DEPARTMENT OF TRANSPORTATION

EAST ABUTMENT
STRUCTURE NO. 096-0074
 SHEET NO. 19 OF 24 SHEETS

F.A.P. RTE.	SECTION	COUNTY	TOTAL SHEETS	SHEET
823	(22.B2A)B-1 & (22.B2B)B-1	Wayne	85	33
			CONTRACT NO. 74216	
ILLINOIS FEDERAL AID PROJECT				