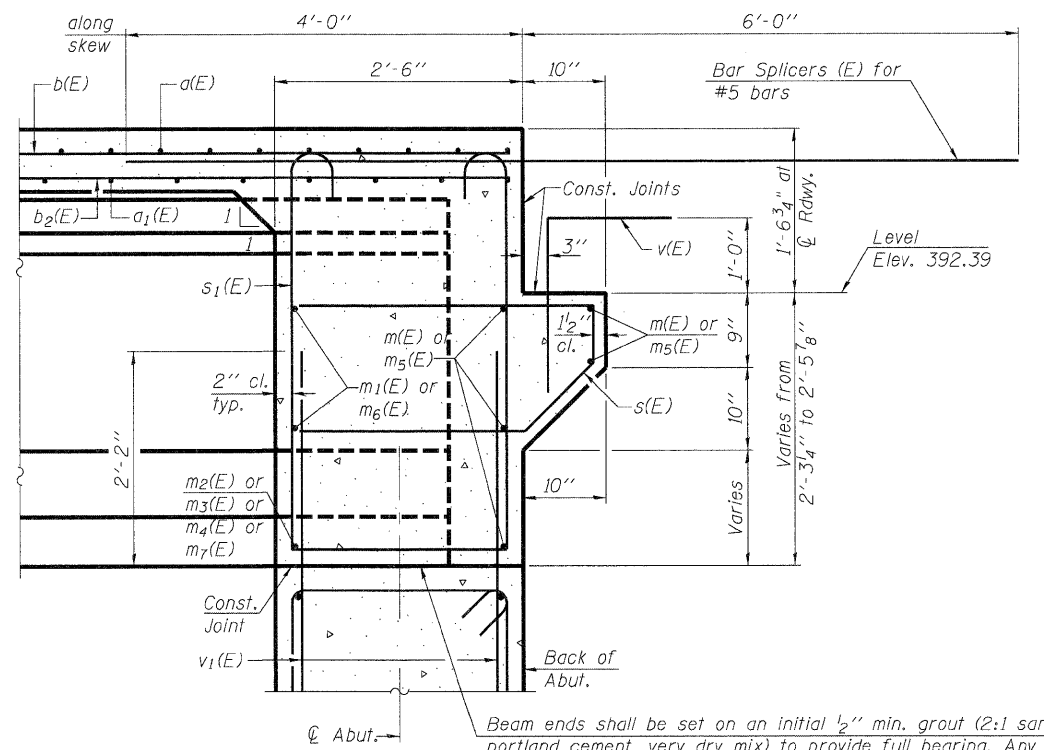


**DIAPHRAGM ELEVATION AT ABUTMENT**

**MIN. BAR LAP**  
#6 bar = 3'-4"



**SECTION A-A**

Dimensions at right angles to abutment, except as shown.

Notes:  
Reinforcement bars in diaphragm are billed with superstructure on sheet 9 of 24.  
Concrete in diaphragm is included with Concrete Superstructure on sheet 9 of 24.  
For details of bars s(E) and s1(E) see sheet 9 of 24.  
The s(E) and s1(E) bars shall be placed parallel to the beams.  
Spacing for these bars shall be at right angles to the beams.

PRINTED DATE: 12/15/2011  
FILE NAME: c:\projects\design\work\_order\_085\CADD\Drawings\Sheets\85\_M05\_Diaphragm.dgn

DESIGNED	- SMA
CHECKED	- DF
DRAWN	- ADC
CHECKED	- DF

**ESI** CONSULTANTS, LTD  
753 WINDSOR ROAD  
CHARLESTON, IL 61920  
(217) 548-1900  
WWW.ESI-CONSULTANTS.LTD.COM  
ILLINOIS DEPARTMENT OF PROFESSIONAL REGULATION REGISTRATION #184-003685

STATE OF ILLINOIS  
DEPARTMENT OF TRANSPORTATION

ABUTMENT DIAPHRAGM DETAILS  
STRUCTURE NO. 096-0073

SHEET NO. 10 OF 24 SHEETS

F.A.P. RTE	SECTION	COUNTY	TOTAL SHEETS	SHEET NO
823	(22.B2A)B-1 & (22.B2B)B-1	Wayne	85	65
CONTRACT NO 74216			ILLINOIS FEDERAL AID PROJECT	