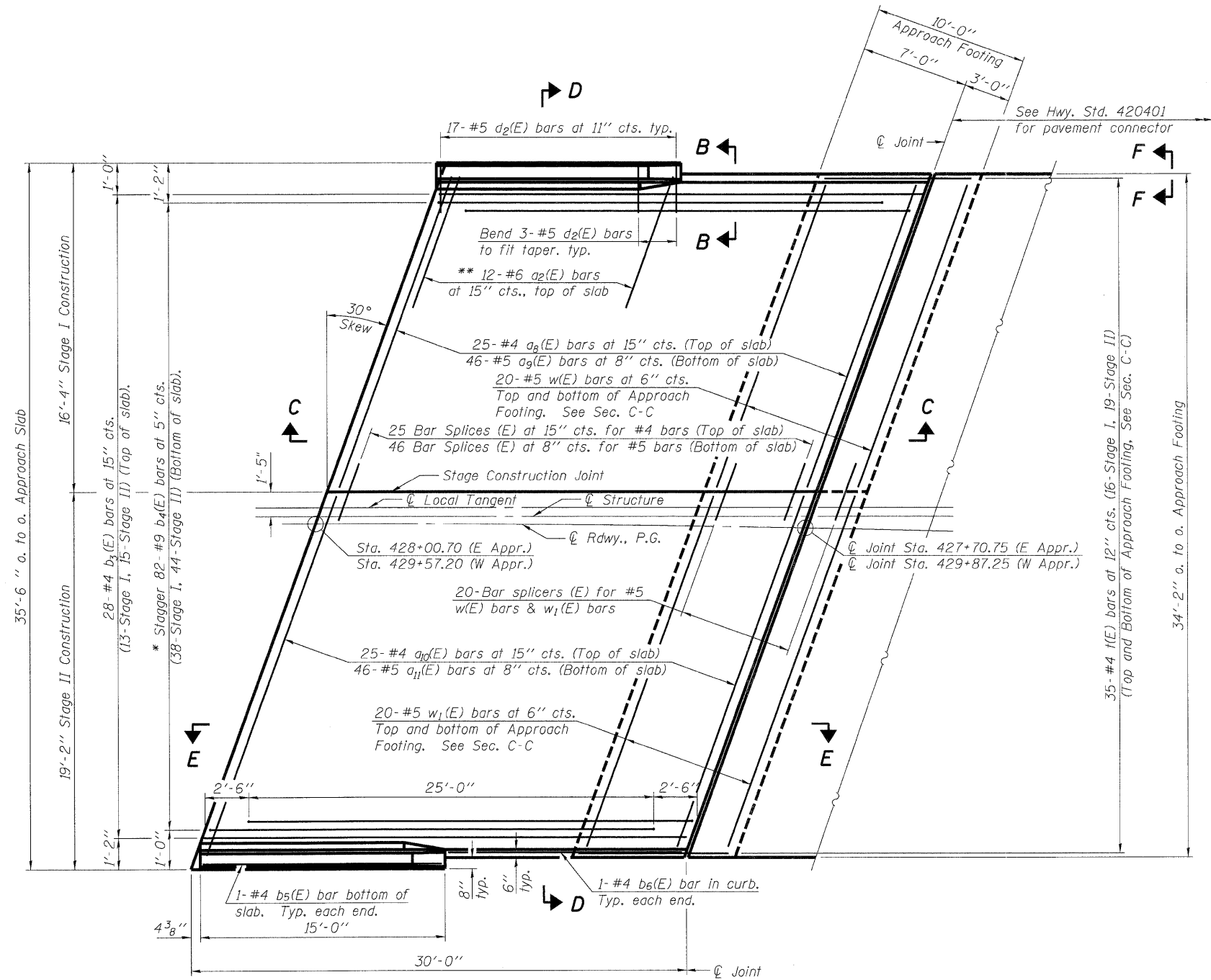
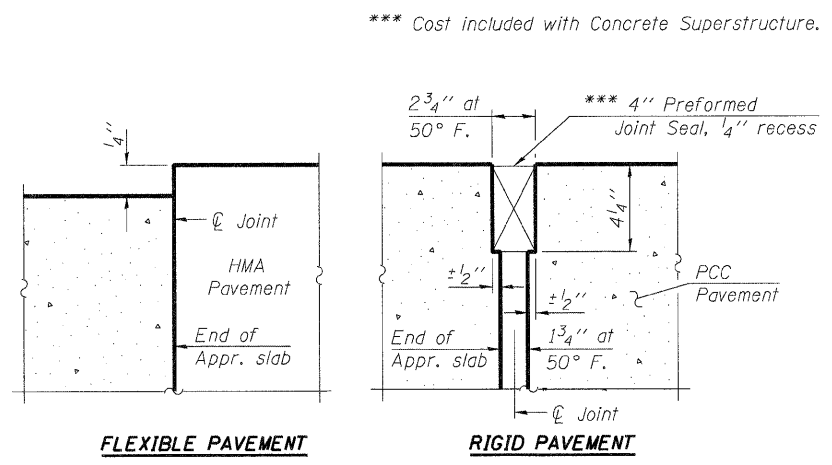


Notes:  
See sheet 13 of 24 for Sections C-C & D-D and View E-E.  
a<sub>8</sub>(E) and a<sub>9</sub>(E) bar spacings measured along  $\phi$  Rdwy.

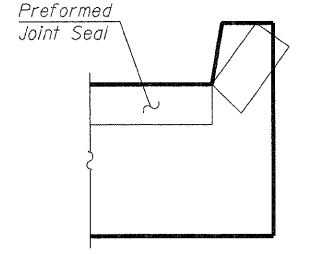
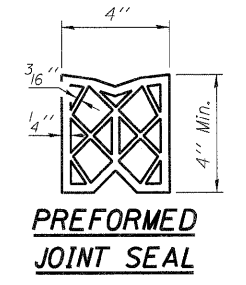


**PLAN**

\* Tilt #9 b<sub>4</sub>(E) bars as required to maintain clearance.  
\*\* Space between a<sub>8</sub>(E) bars, typ. each parapet.

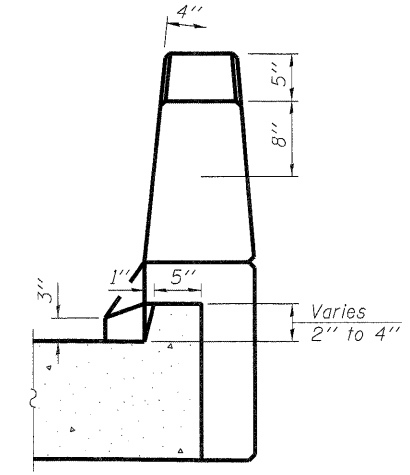


**DETAIL A**



**VIEW F-F**

Angle Preformed Joint Seal at 45° at curbs when req'd for drainage.



**VIEW B-B**

(Sheet 1 of 2)

PRINTED DATE: 12/15/2011  
FILE NAME: n:\projects\148\148\_1\148\_1.dwg

DESIGNED	-	ADG
CHECKED	-	DF
DRAWN	-	ADG
CHECKED	-	DF

**ESI** CONSULTANTS, LTD  
753 WINDSOR ROAD  
CHARLESTON, IL 61920  
(217) 348-1900  
WWW.ESI-CONSULTANTS.LTD.COM  
ILLINOIS DEPARTMENT OF PROFESSIONAL REGULATION REGISTRATION #184-003685

STATE OF ILLINOIS  
DEPARTMENT OF TRANSPORTATION

BRIDGE APPROACH SLAB DETAILS  
STRUCTURE NO. 096-0073

SHEET NO. 12 OF 24 SHEETS

F.A.P. RTE.	SECTION	COUNTY	TOTAL SHEETS	SHEET NO.
823	(22,B2A)B-1 & (22,B2B)B-1	Wayne	85	67
CONTRACT NO 74216				
ILLINOIS FEDERAL AID PROJECT				