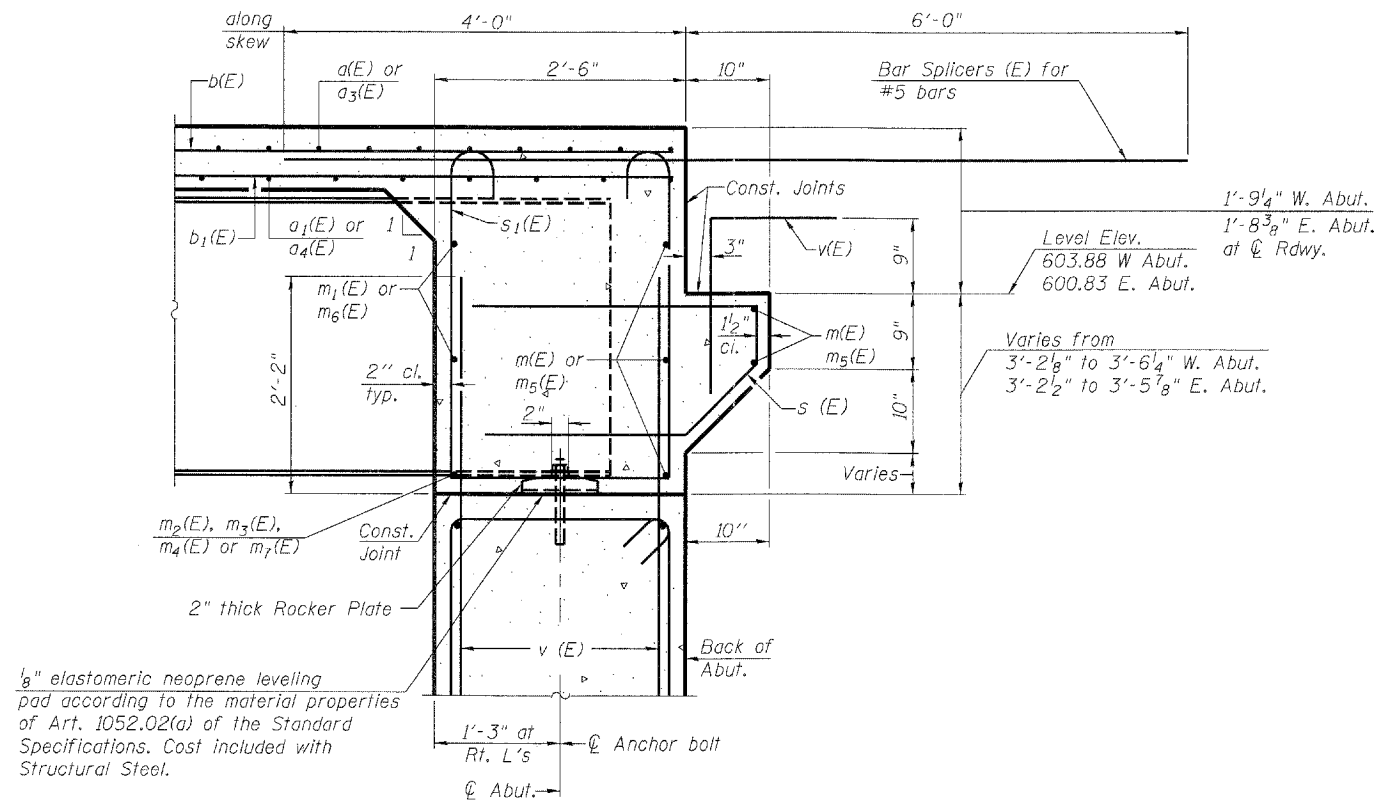


\* Use bent bar splicers in front face.  
See details on sheet 22 of 24.

**DIAPHRAGM ELEVATION AT EAST ABUTMENT**  
(Looking East - West Abut. similar)

Notes:  
Reinforcement bars in diaphragm are billed with superstructure on sheet 10 of 24.  
Concrete in diaphragm is included with Concrete Superstructure on sheet 10 of 24.  
For details of bars s(E), s1(E) & v(E) see sheet 10 of 24.  
The s(E) and s1(E) bars shall be placed parallel to the beams. Spacing for these bars shall be at right angles to the beams.



**SECTION A-A**  
Dimensions at right angles to abutment, except as shown.

**MIN. BAR LAP**  
#6 bar = 3'-4"

PRINTED DATE: 5/11/2011 FILE NAME: c:\p\projects\148\148.dwg



DESIGNED - DF	REVISED -
CHECKED - ADG, SA	REVISED -
DRAWN - ADG	REVISED -
CHECKED - DF	REVISED -

STATE OF ILLINOIS  
DEPARTMENT OF TRANSPORTATION

INTEGRAL ABUTMENT DIAPHRAGM DETAILS  
STRUCTURE NO. 015-0075

SHEET NO. 11 OF 24 SHEETS

F.A.P. RTE.	SECTION	COUNTY	TOTAL SHEETS	SHEET NO.
91	(SBR)B-1	COLES	91	46
CONTRACT NO. 74244				
FED. ROAD DIST. NO. - ILLINOIS FED. AID PROJECT				