

**STANDARD BAR SPICER ASSEMBLY**

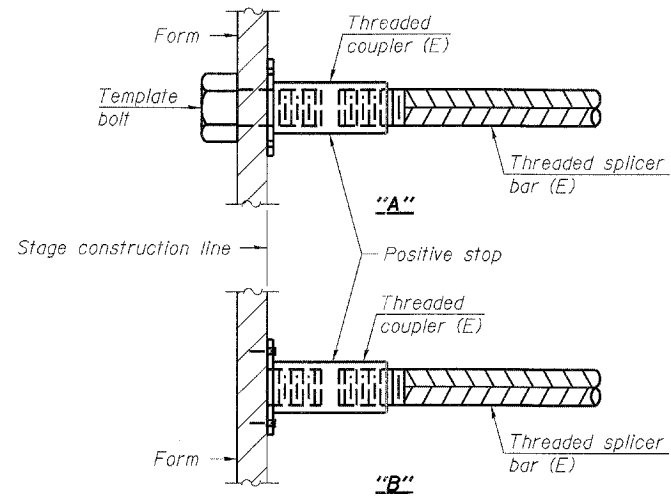
Bar size to be spliced	Minimum Lap Lengths				
	Table 1	Table 2	Table 3	Table 4	Table 5
3, 4	1'-5"	1'-11"	2'-1"	2'-4"	2'-3"
5	1'-9"	2'-5"	2'-7"	2'-11"	2'-10"
6	2'-1"	2'-11"	3'-1"	3'-6"	3'-4"
7	2'-9"	3'-10"	4'-2"	4'-8"	4'-6"
8	3'-8"	5'-1"	5'-5"	6'-2"	5'-10"
9	4'-7"	6'-5"	6'-10"	7'-9"	7'-5"

- Table 1: Black bar, 0.8 Class C
- Table 2: Black bar, Top bar lap, 0.8 Class C
- Table 3: Epoxy bar, 0.8 Class C
- Table 4: Epoxy bar, Top bar lap, 0.8 Class C
- Table 5: Epoxy bar, Top bar lap, Class B

Threaded splicer bar length = min. lap length + 1 1/2" + thread length

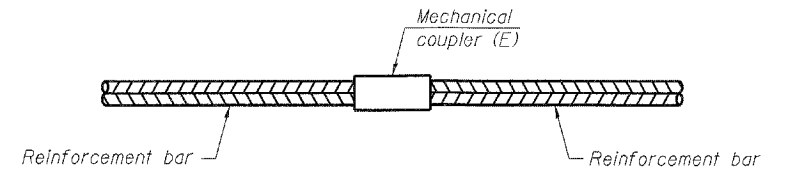
\* Epoxy not required on Bar Splicer Assembly components used in conjunction with black bars.

Location	Bar size	No. assemblies required	Table for minimum lap length
Deck	#5	1194	3
Abutments	#7	18	4
Abut. Diaph.	#6	16	5
Approach Slabs	#4	50	3
Approach Slabs	#5	172	3
Piers	#5	308	4
Piers	#8	16	4



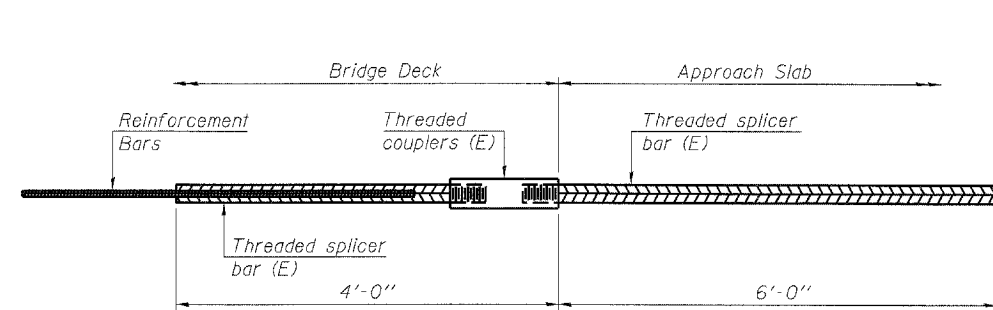
**INSTALLATION AND SETTING METHODS**

- "A" : Set bar splicer assembly by means of a template bolt.
- "B" : Set bar splicer assembly by nailing to wood forms or cementing to steel forms.
- (E) : Indicates epoxy coating.



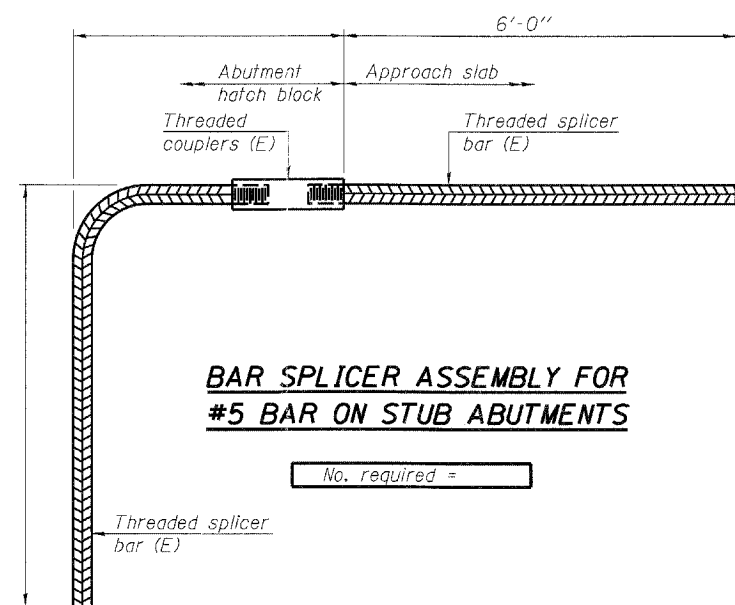
**STANDARD MECHANICAL SPICER**

Location	Bar size	No. assemblies required
Piers	#9	96



**BAR SPICER ASSEMBLY FOR #5 BAR ON INTEGRAL OR SEMI-INTEGRAL ABUTMENTS**

No. required = 92



**BAR SPICER ASSEMBLY FOR #5 BAR ON STUB ABUTMENTS**

No. required =

**NOTES**

- Splicer bars shall be deformed with threaded ends and have a minimum 60 ksi yield strength.
- All reinforcement shall be lapped and tied to the splicer bars.
- Bar splicer assemblies shall be epoxy coated according to the requirements for reinforcement bars. See Section 508 of the Standard Specifications.
- See special provision for Mechanical Splicers.
- See approved list of bar splicer assemblies and mechanical splicers for alternatives.

PRINTED DATE: 5/11/2011  
FILE NAME: m:\projects\148\item\_25 - 07\various drawings\Sheets\57\_P146\_BarSplicer.dgn

BSD-1 7-1-10



DESIGNED - DF	REVISED -
CHECKED - ADG, SA	REVISED -
DRAWN - ADG	REVISED -
CHECKED - DF	REVISED -

STATE OF ILLINOIS  
DEPARTMENT OF TRANSPORTATION

BAR SPICER ASSEMBLY AND MECHANICAL SPICER DETAILS  
STRUCTURE NO. 015-0075

SHEET NO. 22 OF 24 SHEETS

F.A.P. RTE.	SECTION	COUNTY	TOTAL SHEETS	SHEET NO.
91	(SBR)B-1	COLES	91	57
CONTRACT NO. 74244				
FED. ROAD DIST. NO. - [ILLINOIS] FED. AID PROJECT				