

STATE OF ILLINOIS  
 DEPARTMENT OF TRANSPORTATION  
 DIVISION OF HIGHWAYS

**PROPOSED  
 HIGHWAY PLANS**

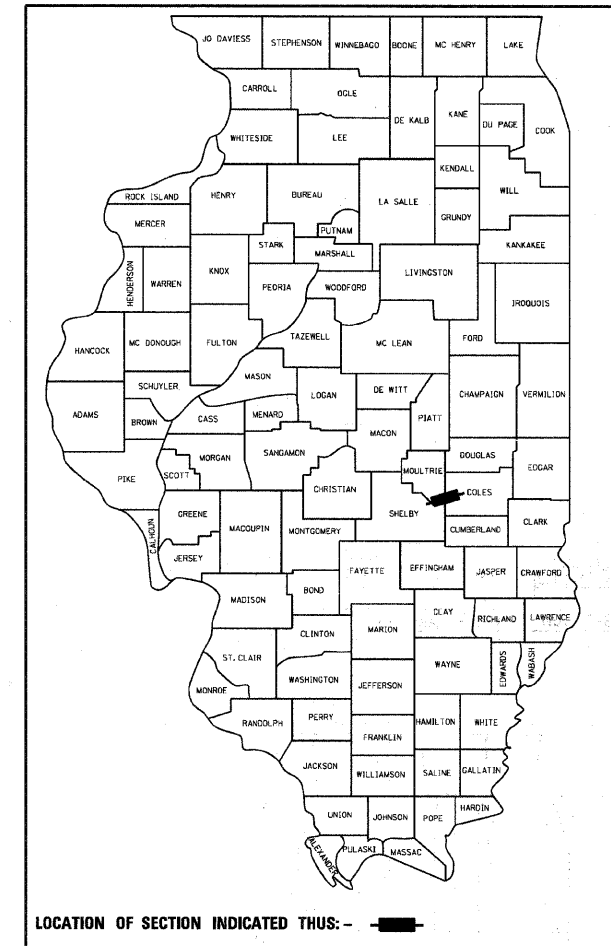
FAP ROUTE 325 (ILL 16), 320 (US 45)  
 SECTION (8,9,10)RS-3, (19Z)RS-2  
 PROJECT F-0005(869)  
 3P RESURFACING  
 COLES & MOULTRIE COUNTIES

C-97-090-07

F.A.P. RTE.	SECTION	COUNTY	TOTAL SHEETS	SHEET NO.
325		ILLINOIS	24	1

•(8,9,10)RS-3, (19Z)RS-2  
 • Coles, Moultrie

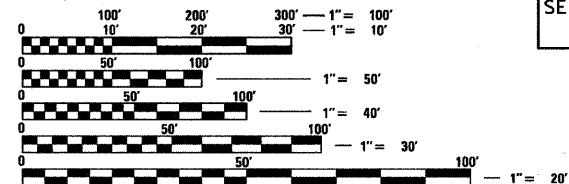
D-97-050-07



LOCATION OF SECTION INDICATED THUS: —■—

FOR INDEX OF SHEETS, SEE SHEET NO. 2

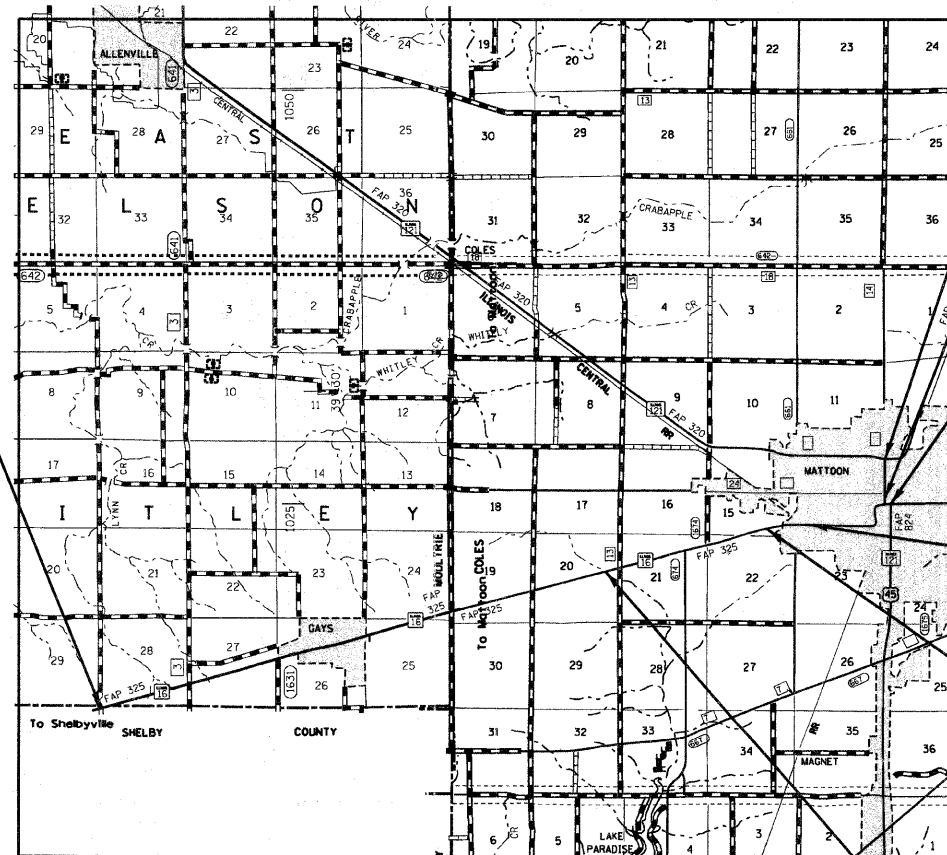
ADT: IL 16 3,800  
 US 45 9,500



FULL SIZE PLANS HAVE BEEN PREPARED USING STANDARD ENGINEERING SCALES. REDUCED SIZED PLANS WILL NOT CONFORM TO STANDARD SCALES. IN MAKING MEASUREMENTS ON REDUCED PLANS, THE ABOVE SCALES MAY BE USED.

J.U.L.I.E.  
 JOINT UTILITY LOCATION INFORMATION FOR EXCAVATION  
 1-800-892-0123  
 OR 811

PROJECT ENGINEER: MARK DAUGHERTY  
 PROJECT MANAGER: SOLOMON DZAKUMA  
 PHONE: (217)-342-8360  
 CONTRACT NO. 74259



SECTION (8, 9, 10)RS-3  
 ENDS STA 426+00

SECTION (19Z)RS-2  
 ENDS STA 30+40.5

SECTION (19Z)RS-2  
 BEGINS STA 2+63

SECTION (8, 9, 10)RS-3  
 BEGINS STA 85+96

STATION EQUATION  
 STA 26+63 =  
 STA 989+25

STATION EQUATION  
 STA 1002+91.3 =  
 STA 2+91.3

BRIDGE OMISSION  
 SN 015-0013  
 STA 109+93.68 TO  
 STA 110+26.36

GROSS LENGTH SECTION (8,9,10)RS-3 = 49,608.00 FT. = 9.395 MILE  
 NET LENGTH SECTION (8,9,10)RS-3 = 49,575.30 FT. = 9.389 MILE  
 GROSS LENGTH SECTION (19Z)RS-2 = 2778 FT. = 0.526 MILE  
 NET LENGTH SECTION (19Z)RS-2 = 2778 FT. = 0.526 MILE

STATE OF ILLINOIS  
 DEPARTMENT OF TRANSPORTATION  
 DIVISION OF HIGHWAYS

SUBMITTED Oct 21 2011  
Rogan J. Driskell  
 DEPUTY DIRECTOR OF HIGHWAYS, REGION ENGINEER

December 9 2011  
Scott E. Stitt P.E.  
 acting ENGINEER OF DESIGN AND ENVIRONMENT

December 9 2011  
William R. Frey Jr.  
 DIRECTOR OF HIGHWAYS, CHIEF ENGINEER

**PRINTED BY THE AUTHORITY  
 OF THE STATE OF ILLINOIS**