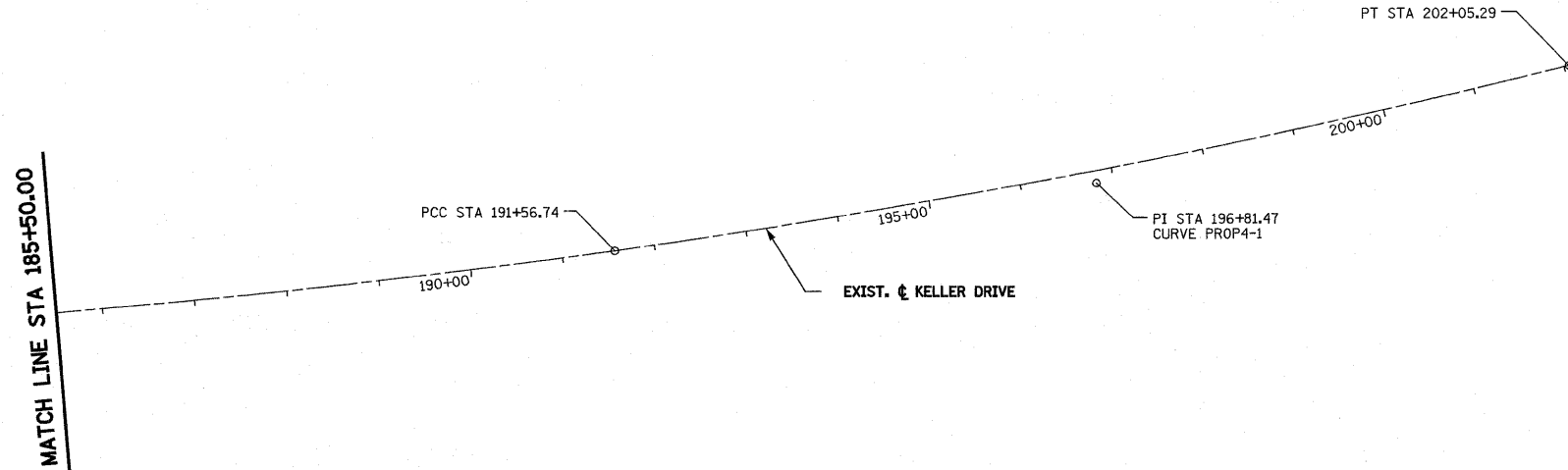


EXIST. KELLER DR.
CURVE PROP3
PI STA = 183+18.93
 $\Delta = 8^\circ 22' 56''$ (LT)
D = 0° 29' 58"
R = 11,473.93'
T = 840.80'
L = 1,678.61'
E = 30.77'
P.C. STA = 174+78.13
P.C.C. STA = 191+56.74

EXIST. KELLER DR.
CURVE PROP4-1
PI STA = 196+81.47
 $\Delta = 5^\circ 51' 13''$ (LT)
D = 0° 33' 30"
R = 10,263.16'
T = 524.73'
L = 1,048.56'
E = 13.41'
P.C.C. STA = 191+56.74
P.T. STA = 202+05.29

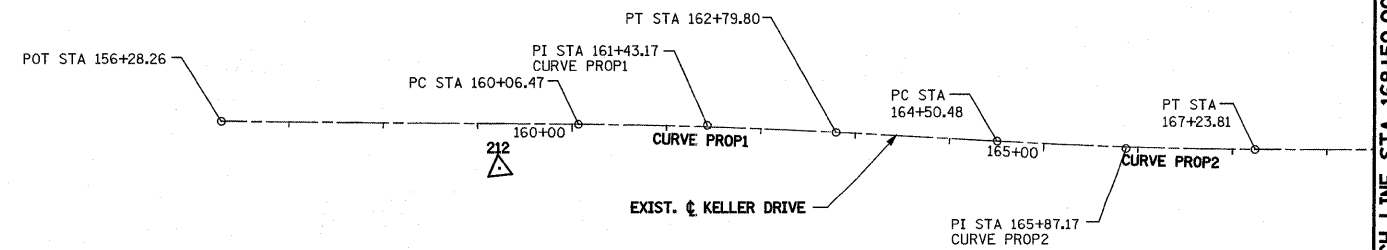


EXISTING KELLER DRIVE

DESCRIPTION	COORDINATE	
	NORTHING	EASTING
POT STA 156+28.26	896828.91	920004.11
PC STA 160+06.47	897176.19	919854.29
PI STA 161+43.17	897301.70	919800.15
PT STA 162+79.80	897429.67	919752.11
PC STA 164+50.48	897589.45	919692.13
PI STA 165+87.17	897717.43	919644.09
PT STA 167+23.81	897842.93	919589.93
PC STA 174+78.13	898535.51	919291.04
PI STA 183+18.93	899307.49	918957.87
PCC STA 191+56.74	900022.65	918515.73
PCC STA 191+56.74	900022.65	918515.73
PI STA 196+81.47	900468.98	918239.80
PT STA 202+05.29	900884.83	917919.78

EXIST. KELLER DR.
CURVE PROP1
PI STA = 161+43.17
 $\Delta = 2^\circ 45' 39''$ (RT)
D = 1° 00' 36"
R = 5,672.33'
T = 136.69'
L = 273.33'
E = 1.65'
P.C. STA = 160+06.47
P.T. STA = 162+79.80

EXIST. KELLER DR.
CURVE PROP2
PI STA = 165+87.17
 $\Delta = 2^\circ 46' 08''$ (LT)
D = 1° 00' 47"
R = 5,655.84'
T = 136.69'
L = 273.33'
E = 1.65'
P.C. STA = 164+50.48
P.T. STA = 167+23.81



EXISTING KELLER DRIVE

DESCRIPTION	COORDINATE	
	NORTHING	EASTING
POT STA 156+28.26	896828.91	920004.11
PC STA 160+06.47	897176.19	919854.29
PI STA 161+43.17	897301.70	919800.15
PT STA 162+79.80	897429.67	919752.11
PC STA 164+50.48	897589.45	919692.13
PI STA 165+87.17	897717.43	919644.09
PT STA 167+23.81	897842.93	919589.93
PC STA 174+78.13	898535.51	919291.04
PI STA 183+18.93	899307.49	918957.87
PCC STA 191+56.74	900022.65	918515.73
PCC STA 191+56.74	900022.65	918515.73
PI STA 196+81.47	900468.98	918239.80
PT STA 202+05.29	900884.83	917919.78

CONTROL POINTS

CONTROL POINT	COORDINATE	
	NORTHING	EASTING
212	897114.16	919920.88



FILE NAME =	USER NAME = jinda	DESIGNED - JWS	REVISED -	STATE OF ILLINOIS DEPARTMENT OF TRANSPORTATION	HORIZONTAL CONTROL, KELLER DRIVE	F.A.I. RTE.	SECTION	COUNTY	TOTAL SHEETS	SHEET NO.
S:\Projects\403-00072-57-70\dgn\Keller\hor_ill.dgn		DRAWN - PDB	REVISED -			57/70	(25-3,4)R	EFFINGHAM	1098	49
PLOT SCALE = 200.0000' / IN.		CHECKED - BRM	REVISED -			CONTRACT NO. 74299				
PLOT DATE = 3/17/2011		DATE - 5-07-08	REVISED -			FED. ROAD DIST. NO. ILLINOIS FED. AID PROJECT				
				SCALE: 1"=100'		SHEET NO. 10 OF 13 SHEETS		STA 156+28.26 TO STA 202+05.29		