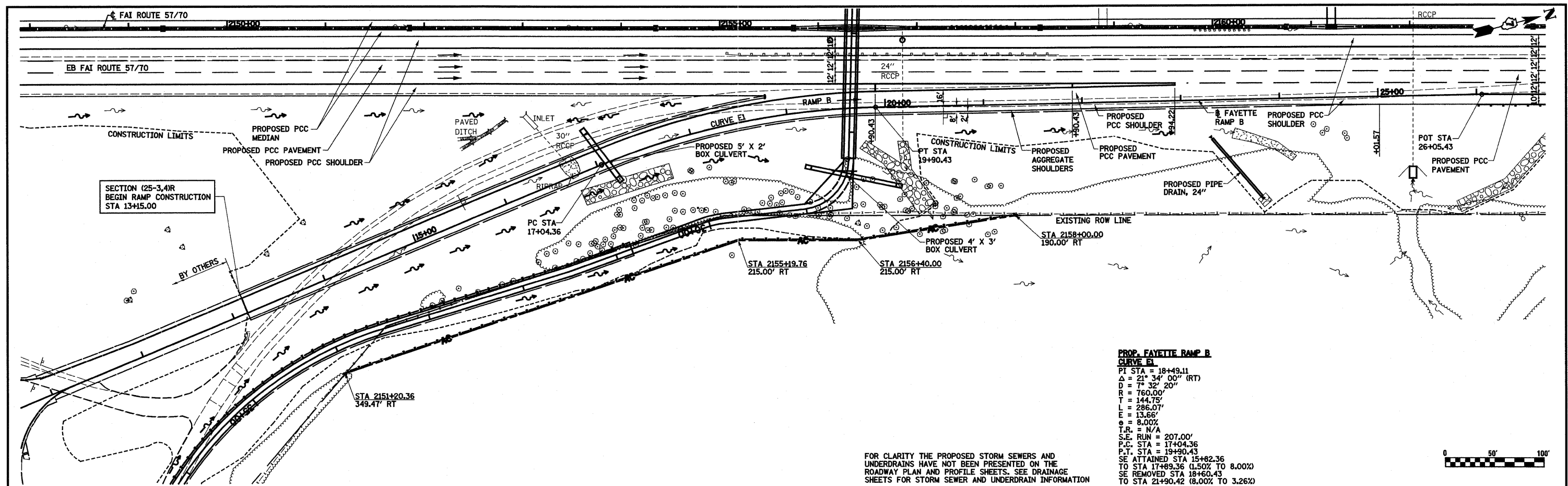


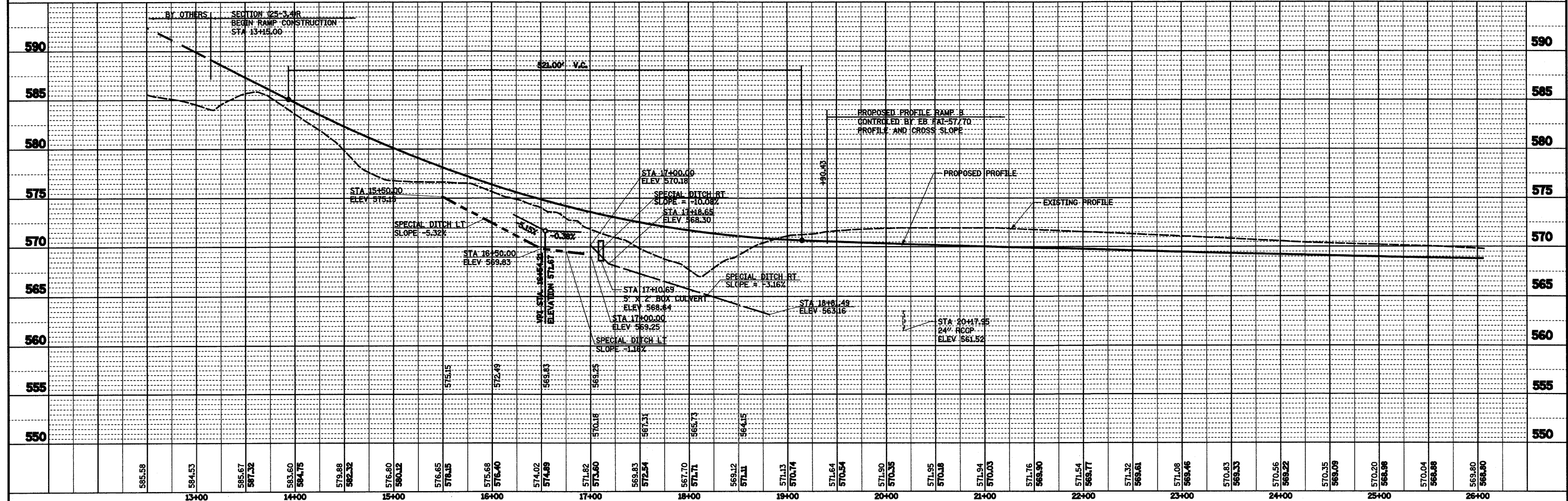
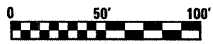
PLAN	SURVEYED	DATE
	PLOTTED	
	GRADES CHECKED	
	STRUCTURE NOTATIONS OK'D	
	NOTE BOOK	
	NO.	
	CADD FILE NAME	

PROFILE	SURVEYED	DATE
	PLOTTED	
	GRADES CHECKED	
	STRUCTURE NOTATIONS OK'D	
	NOTE BOOK	
	NO.	
	CADD FILE NAME	



**PROP. FAYETTE RAMP B  
CURVE E1**  
 PT STA = 18+49.11  
 $\Delta = 21^\circ 34' 00''$  (RT)  
 $D = 7^\circ 32' 20''$   
 $R = 760.00'$   
 $T = 144.75'$   
 $L = 286.07'$   
 $E = 13.66'$   
 $e = 8.00\%$   
 $T.R. = N/A$   
 $S.E. RUN = 207.00'$   
 $P.C. STA = 17+04.36$   
 $P.T. STA = 19+90.43$   
 $SE ATTAINED STA 15+82.36$   
 TO STA 17+89.36 (1.50% TO 8.00%)  
 $SE REMOVED STA 18+60.43$   
 TO STA 21+90.42 (8.00% TO 3.26%)

FOR CLARITY THE PROPOSED STORM SEWERS AND UNDERDRAINS HAVE NOT BEEN PRESENTED ON THE ROADWAY PLAN AND PROFILE SHEETS, SEE DRAINAGE SHEETS FOR STORM SEWER AND UNDERDRAIN INFORMATION



FILE NAME =	USER NAME = John	DESIGNED - JWS	REVISED -	<b>STATE OF ILLINOIS DEPARTMENT OF TRANSPORTATION</b>	<b>PLAN AND PROFILE, RAMP B, FAYETTE AVENUE</b>	F.A.I. RTE.	SECTION	COUNTY	TOTAL SHEETS	SHEET NO.	
S:\Projects\403-00072-57-70\dm\keller\PP_5770.dgn		DRAWN - PDB	REVISED -			57/70	(25-3,4)R	EFFINGHAM	1098	67	
PLOT SCALE = 100.0000' / IN.		CHECKED - BRM	REVISED -			CONTRACT NO. 74299					
PLOT DATE = 3/19/2011		DATE - 6-5-08	REVISED -			FED. ROAD DIST. NO. ILLINOIS FED. AID PROJECT					