

PLAN	SURVEYED	DATE
	PLOTTED	BY
	GRADES CHECKED	
	RT. OF WAY CHECKED	
	STRUCTURE NOTATIONS OK'D	
	NO. _____	
	DATE _____	

PROFILE	SURVEYED	DATE
	PLOTTED	BY
	GRADES CHECKED	
	STRUCTURE NOTATIONS OK'D	
	NO. _____	
	DATE _____	

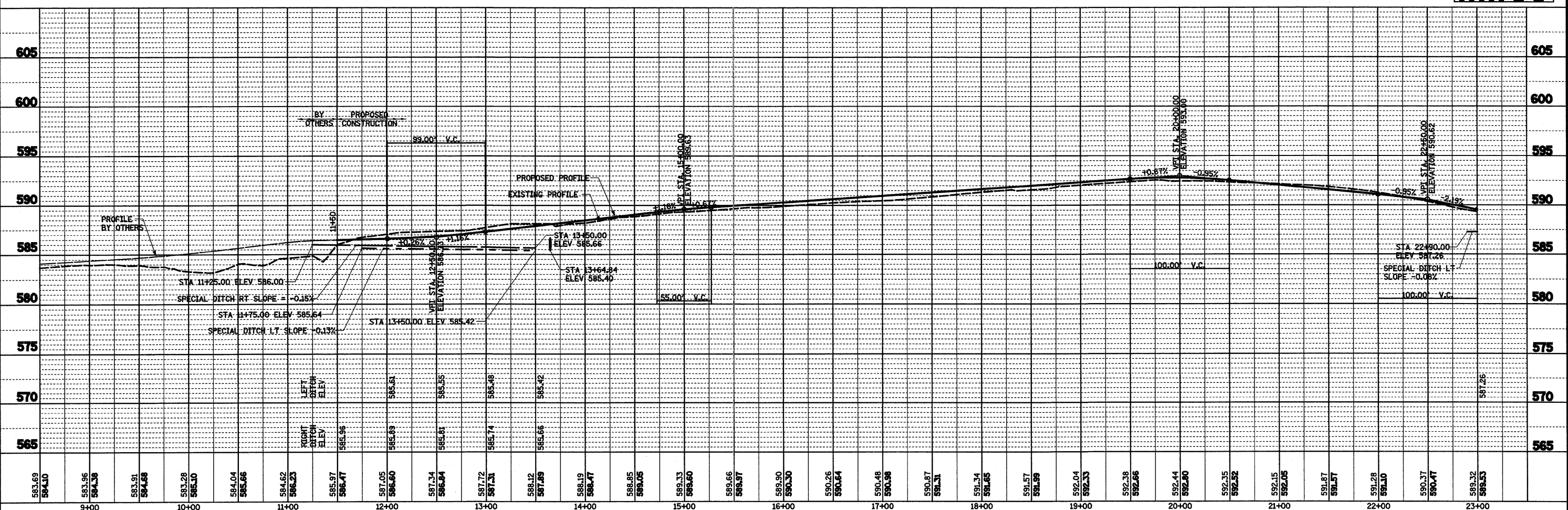
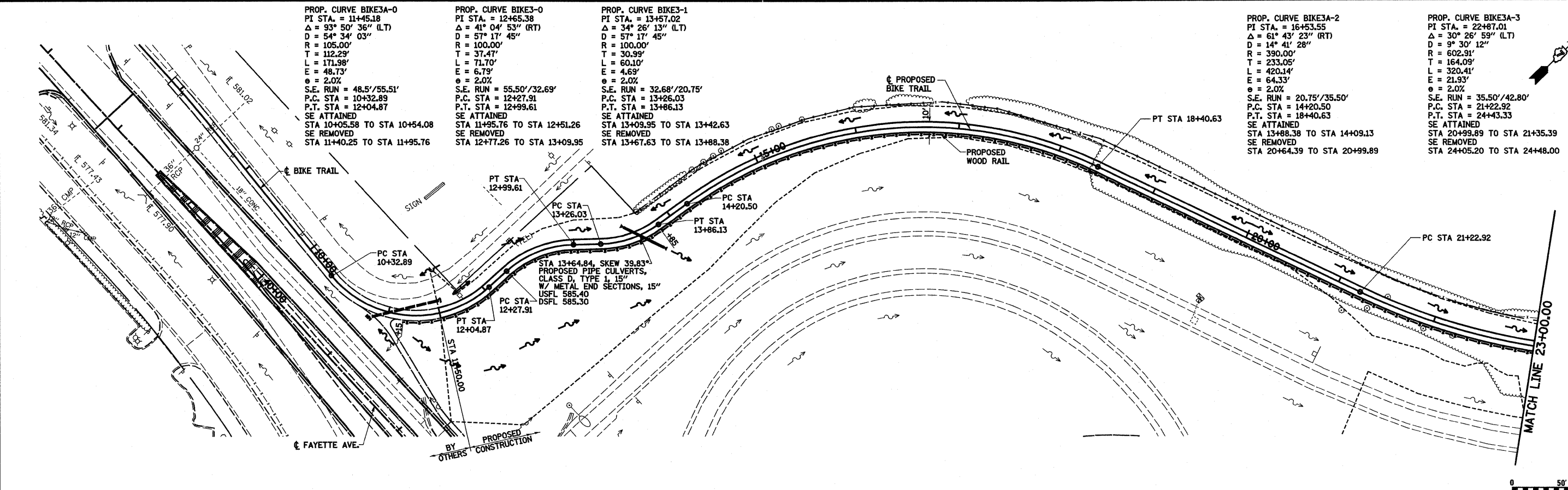
PROP. CURVE BIKE3A-0
 PI STA. = 11+45.18
 $\Delta = 93^\circ 50' 36''$ (LT)
 $D = 54^\circ 34' 03''$
 $R = 105.00'$
 $T = 112.29'$
 $L = 171.98'$
 $E = 48.73'$
 $\theta = 2.0\%$
 S.E. RUN = 48.5'/55.51'
 P.C. STA = 10+32.89
 P.T. STA = 12+04.87
 SE ATTAINED
 STA 10+05.58 TO STA 10+54.08
 SE REMOVED
 STA 11+40.25 TO STA 11+95.76

PROP. CURVE BIKE3-0
 PI STA. = 12+65.38
 $\Delta = 41^\circ 04' 53''$ (RT)
 $D = 57^\circ 17' 45''$
 $R = 100.00'$
 $T = 37.47'$
 $L = 71.70'$
 $E = 6.79'$
 $\theta = 2.0\%$
 S.E. RUN = 55.50'/32.69'
 P.C. STA = 12+27.91
 P.T. STA = 12+99.61
 SE ATTAINED
 STA 11+95.76 TO STA 12+51.26
 SE REMOVED
 STA 12+77.26 TO STA 13+09.95

PROP. CURVE BIKE3-1
 PI STA. = 13+57.02
 $\Delta = 34^\circ 26' 13''$ (LT)
 $D = 57^\circ 17' 45''$
 $R = 100.00'$
 $T = 30.99'$
 $L = 60.10'$
 $E = 4.69'$
 $\theta = 2.0\%$
 S.E. RUN = 32.68'/20.75'
 P.C. STA = 13+26.03
 P.T. STA = 13+86.13
 SE ATTAINED
 STA 13+09.95 TO STA 13+42.63
 SE REMOVED
 STA 13+67.63 TO STA 13+88.38

PROP. CURVE BIKE3A-2
 PI STA. = 16+53.55
 $\Delta = 61^\circ 43' 23''$ (RT)
 $D = 14^\circ 41' 28''$
 $R = 390.00'$
 $T = 233.05'$
 $L = 420.14'$
 $E = 64.33'$
 $\theta = 2.0\%$
 S.E. RUN = 20.75'/35.50'
 P.C. STA = 14+20.50
 P.T. STA = 18+40.63
 SE ATTAINED
 STA 13+88.38 TO STA 14+09.13
 SE REMOVED
 STA 20+64.39 TO STA 20+99.89

PROP. CURVE BIKE3A-3
 PI STA. = 22+87.01
 $\Delta = 30^\circ 26' 59''$ (LT)
 $D = 9^\circ 30' 12''$
 $R = 602.91'$
 $T = 164.09'$
 $L = 320.41'$
 $E = 21.93'$
 $\theta = 2.0\%$
 S.E. RUN = 35.50'/42.80'
 P.C. STA = 21+22.92
 P.T. STA = 24+43.33
 SE ATTAINED
 STA 20+99.89 TO STA 21+35.39
 SE REMOVED
 STA 24+05.20 TO STA 24+48.00



FILE NAME =	USER NAME = John	DESIGNED - JWS	REVISED -	STATE OF ILLINOIS DEPARTMENT OF TRANSPORTATION	PLAN AND PROFILE, BIKE TRAIL	SECTION (25-3,4R)	COUNTY EFFINGHAM	TOTAL SHEETS 1098	SHEET NO. 78
SA\Projects\403-00072_51-70\plan\ML_Keller_VP_Bike.dgn	PLOT SCALE = 100.0000' / IN.	DRAWN - PDB	REVISED -						
	PLOT DATE = 3/20/2011	CHECKED - BRM	REVISED -						
		DATE - 6-5-08	REVISED -						
					SCALE: 1"=50'	SHEET NO. 1 OF 3 SHEETS	STA. 8+50.00 TO STA. 23+00.00	FED. ROAD DIST. NO. ILLINOIS FED. AID PROJECT CONTRACT NO. 74299	