

PROP. CURVE BIKE3A-3
 PI STA. = 22+87.01
 $\Delta = 30^\circ 26' 59''$ (LT)
 $D = 9^\circ 30' 12''$
 $R = 602.91'$
 $T = 164.09'$
 $L = 320.41'$
 $E = 21.93'$
 $e = 2.0\%$
 S.E. RUN = 35.50'/42.80'
 P.C. STA = 21+22.92
 P.T. STA = 24+43.33
 SE ATTAINED
 STA 20+99.89 TO STA 21+35.39
 SE REMOVED
 STA 24+05.20 TO STA 24+48.00

PROP. CURVE BIKE3A-4
 PI STA. = 25+08.50
 $\Delta = 66^\circ 12' 45''$ (RT)
 $D = 81^\circ 51' 04''$
 $R = 70.00'$
 $T = 45.64'$
 $L = 80.89'$
 $E = 13.57'$
 $e = 2.0\%$
 S.E. RUN = 42.80'/27.51'
 P.C. STA = 24+62.85
 P.T. STA = 25+43.75
 SE ATTAINED
 STA 24+48.00 TO STA 24+90.80
 SE REMOVED
 STA 25+22.34 TO STA 25+49.85

PROP. CURVE BIKE3-5C
 PI STA. = 28+73.48
 $\Delta = 81^\circ 59' 02''$ (RT)
 $D = 114^\circ 35' 30''$
 $R = 50.00'$
 $T = 43.45'$
 $L = 71.54'$
 $E = 16.24'$
 $e = 2.0\%$
 S.E. RUN = 11.52'/60.55'
 P.C. STA = 28+30.03
 P.T. STA = 29+01.57
 SE ATTAINED
 STA 28+39.91 TO STA 28+51.43
 SE REMOVED
 STA 28+78.30 TO STA 29+38.85

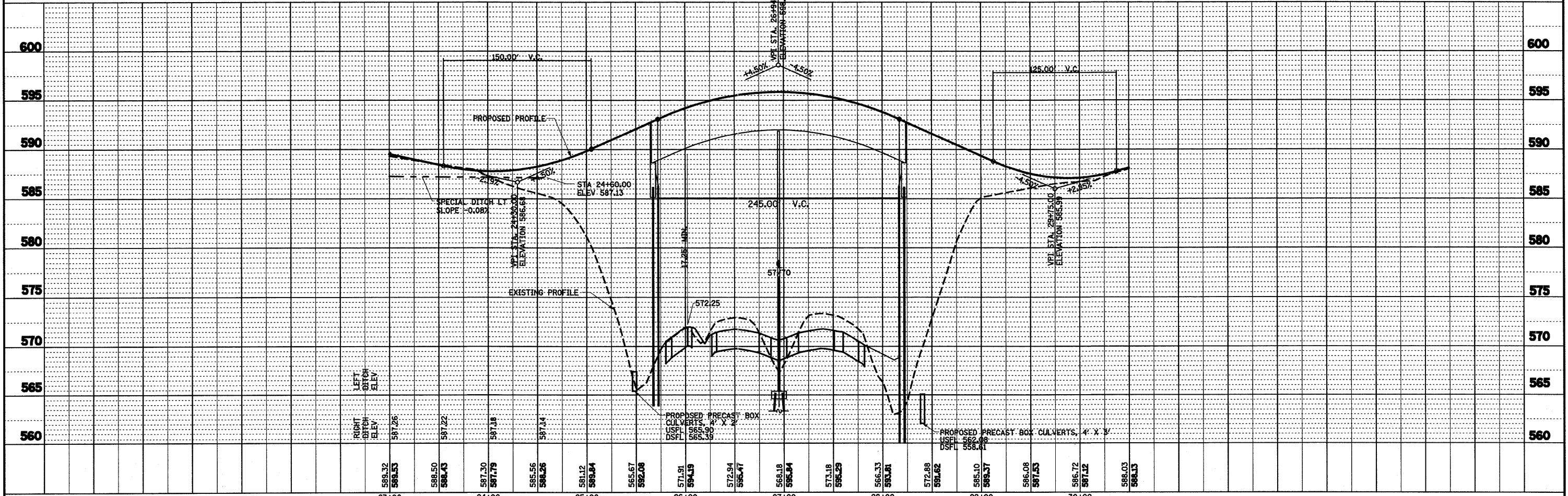
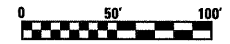
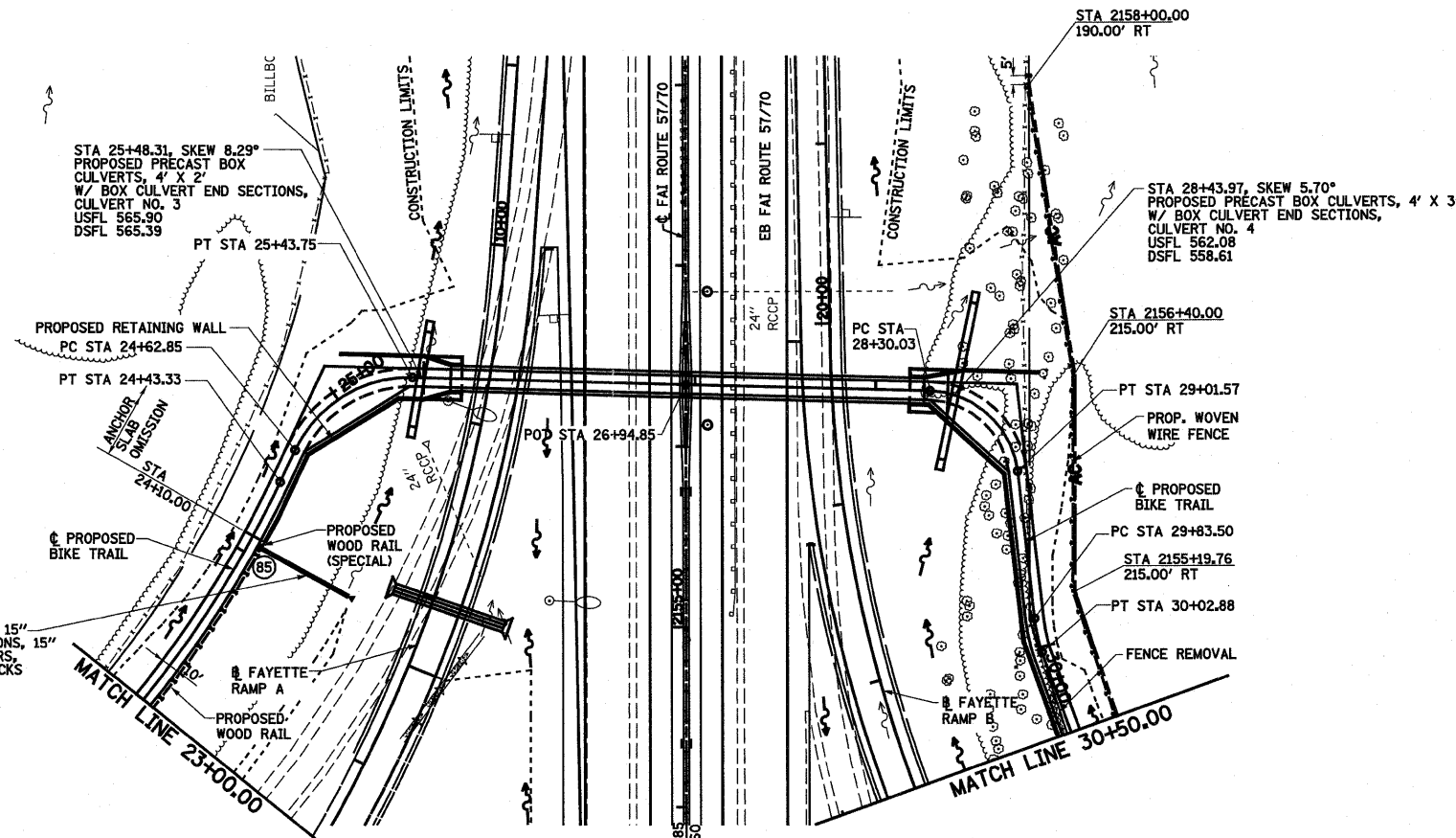
PROP. CURVE BIKE3A-6
 PI STA. = 29+93.22
 $\Delta = 11^\circ 06' 19''$ (LT)
 $D = 57^\circ 17' 45''$
 $R = 100.00'$
 $T = 9.72'$
 $L = 19.38'$
 $E = 0.47'$
 $e = 2.0\%$
 S.E. RUN = 60.55'/72.34'
 P.C. STA = 29+83.50
 P.T. STA = 30+02.88
 SE ATTAINED
 STA 29+38.85 TO STA 29+99.40
 SE REMOVED
 STA 30+02.88 TO STA 30+75.22

DATE	
BY	
PLAN	
SURVEYED	
ALIGNMENT CHECKED	
GRADES CHECKED	
NOTE BOOK	
NO.	

DATE	
BY	
PROFILE	
SURVEYED	
GRADES CHECKED	
NOTE BOOK	
NO.	

(85) STA 24+06.00, 6.3' RT
 PROPOSED INLETS, TYPE A,
 TYPE 24 FRAME AND GRATE
 GR 587.80
 FL 584.13

PROPOSED PIPE DRAIN 15"
 AND METAL END SECTIONS,
 WITH CONCRETE ANCHORS,
 CONCRETE THRUST BLOCKS
 USFL=584.30
 DSFL=568.02



FILE NAME =	USER NAME = paul	DESIGNED - JWS	REVISED - 4-27-11	STATE OF ILLINOIS DEPARTMENT OF TRANSPORTATION	PLAN AND PROFILE, BIKE TRAIL			F.A.I. RTE.	SECTION	COUNTY	TOTAL SHEETS	SHEET NO.
S:\Projects\403-00072_51-70\dgn\ML_Keller\Misc_Rev 4-28-2011\PP_Bike_Revs 4-29-11.dgn		DRAWN - PDB	REVISED -		57/70	(25-3,4)R	EFFINGHAM	1098	79			
PLOT SCALE = 1/8"=1'-0"		CHECKED - BRM	REVISED -		SCALE: 1"=50'			SHEET NO. 2 OF 3 SHEETS		STA. 23+00.00 TO STA. 30+50.00		
PLOT DATE = 4/28/2011		DATE - 6-5-08	REVISED -		CONTRACT NO. 74299			FED. ROAD DIST. NO. ILLINOIS FED. AID PROJECT				