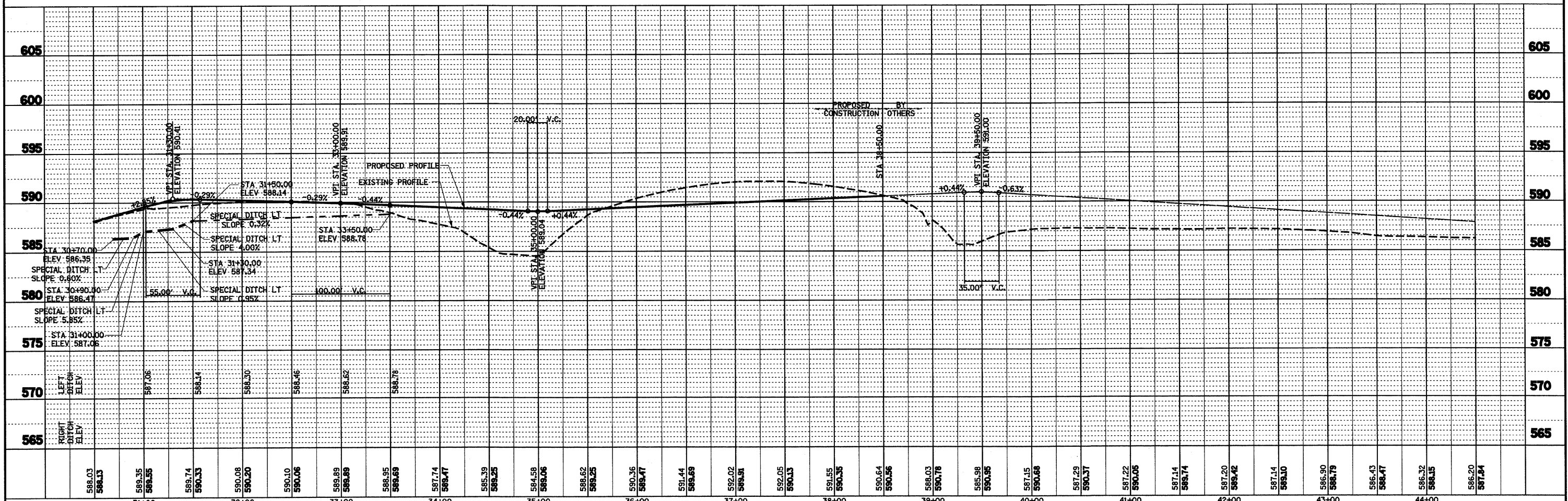
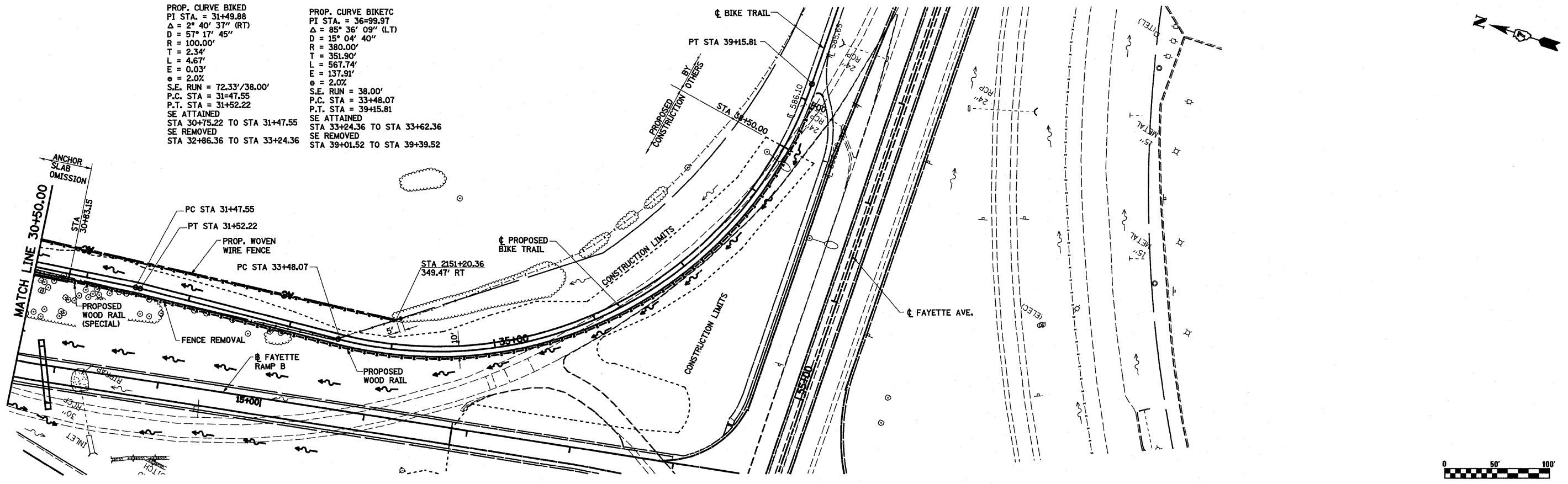


DATE	
BY	
PLAN	
NO. OF SHEETS	
NO.	
DATE	
BY	
PLAN	
NO. OF SHEETS	
NO.	

DATE	
BY	
PROFILE	
NO. OF SHEETS	
NO.	
DATE	
BY	
PROFILE	
NO. OF SHEETS	
NO.	

PROP. CURVE BIKED
 PI STA. = 31+49.88
 $\Delta = 2^\circ 40' 37''$ (RT)
 $D = 57^\circ 17' 45''$
 $R = 100.00'$
 $T = 2.34'$
 $L = 4.67'$
 $E = 0.03'$
 $\theta = 2.0\%$
 S.E. RUN = 72.33'/38.00'
 P.C. STA = 31+47.55
 P.T. STA = 31+52.22
 SE ATTAINED
 STA 30+75.22 TO STA 31+47.55
 SE REMOVED
 STA 32+86.36 TO STA 33+24.36

PROP. CURVE BIKETC
 PI STA. = 36+99.97
 $\Delta = 85^\circ 36' 09''$ (LT)
 $D = 15^\circ 04' 40''$
 $R = 380.00'$
 $T = 351.90'$
 $L = 567.74'$
 $E = 137.91'$
 $\theta = 2.0\%$
 S.E. RUN = 38.00'
 P.C. STA = 33+48.07
 P.T. STA = 39+15.81
 SE ATTAINED
 STA 33+24.36 TO STA 33+62.36
 SE REMOVED
 STA 39+01.52 TO STA 39+39.52



FILE NAME =	USER NAME = pswl	DESIGNED - JWS	REVISED - 4-27-11	STATE OF ILLINOIS DEPARTMENT OF TRANSPORTATION	PLAN AND PROFILE, BIKE TRAIL	F.A.I. RTE.	SECTION	COUNTY	TOTAL SHEETS	SHEET NO.		
57/70	(25-3,4R)	EFFINGHAM	1098			80						
SCALE: 1"=50'						SHEET NO. 3 OF 3 SHEETS	STA. 30+50.00 TO STA. 44+50.00	CONTRACT NO. 74299				
PLOT DATE = 4/28/2011						FED. ROAD DIST. NO. ILLINOIS FED. AID PROJECT						