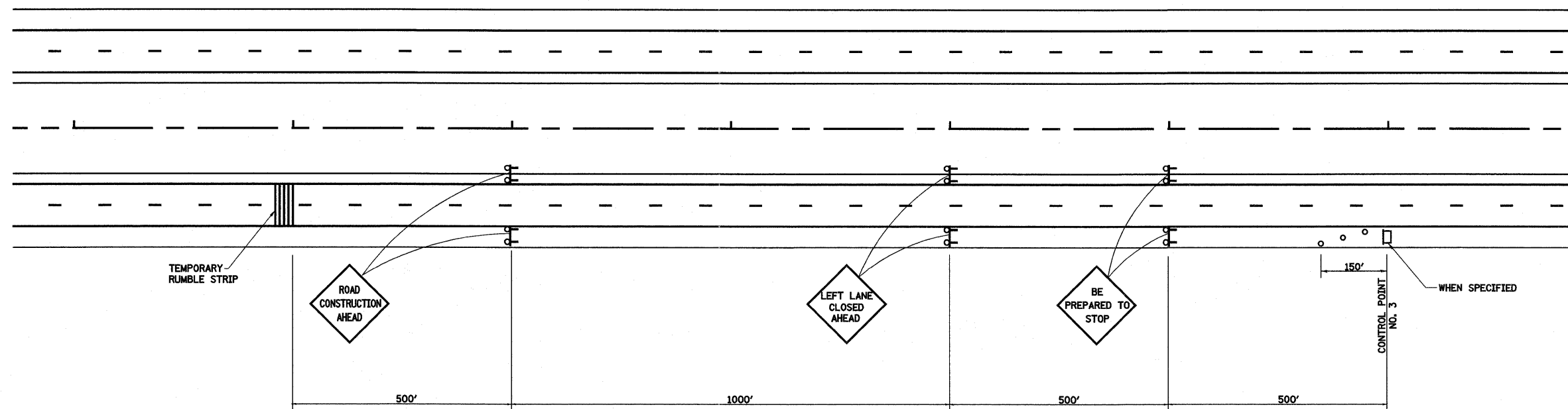


**TRAFFIC CONTROL AND PROTECTION
CASE NO. II**



**TRAFFIC CONTROL AND PROTECTION
CASE NO. III**

LEGEND

- ↑ ARROW BOARD
- ☒ TYPE III BARRICADE WITH 2 HIGH INTENSITY FLASHING LIGHTS
- CHANGEABLE MESSAGE SIGN, SPECIAL
- TYPE I OR II BARRICADE WITH MONODIRECTIONAL FLASHING LIGHTS

FOR INFORMATION ONLY

FILE NAME =	USER NAME = lnda	DESIGNED - JWS	REVISED -	STATE OF ILLINOIS DEPARTMENT OF TRANSPORTATION	APPROACH TO LANE CLOSURE FAI ROUTE 57/70		F.A.I. RTE. 57/70	SECTION (25-3,4)R	COUNTY EFFINGHAM	TOTAL SHEETS 1098	SHEET NO. 85	
SI\Projects\403-00072-57-70\dgn\ML_Keller\Approach Sign Lane Closure.dgn		DRAWN - PDB	REVISED -		SCALE:	SHEET NO. 4 OF 4 SHEETS	STA. TO STA.	CONTRACT NO. 74299				
PLOT SCALE = 200.0000' / IN.		CHECKED - BRM	REVISED -		FED. ROAD DIST. NO. ILLINOIS FED. AID PROJECT							
PLOT DATE = 3/17/2011		DATE - 10-19-10	REVISED -									