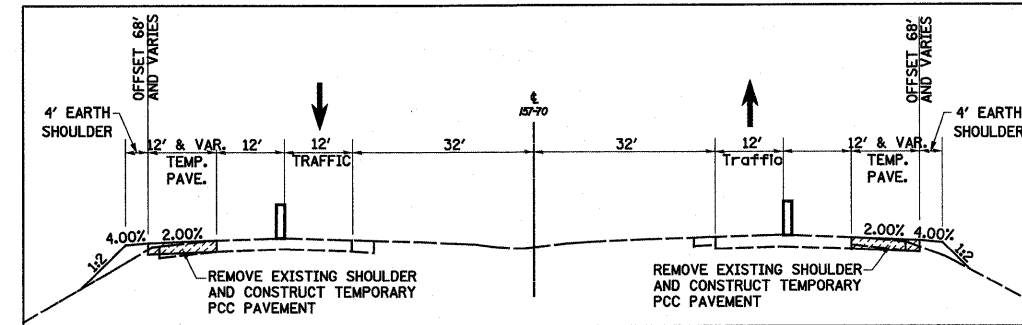


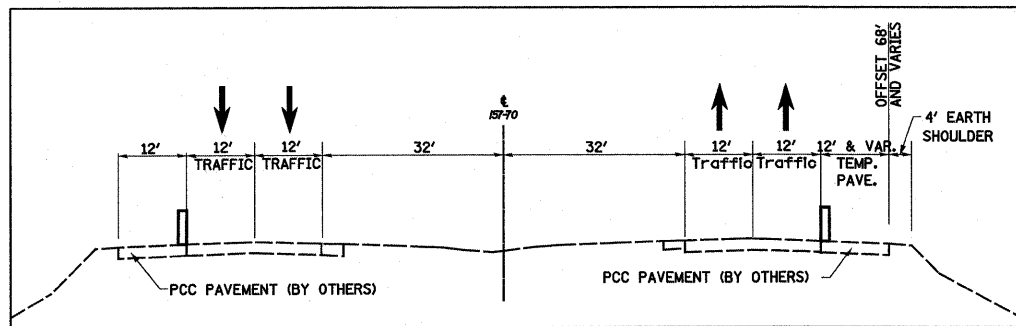
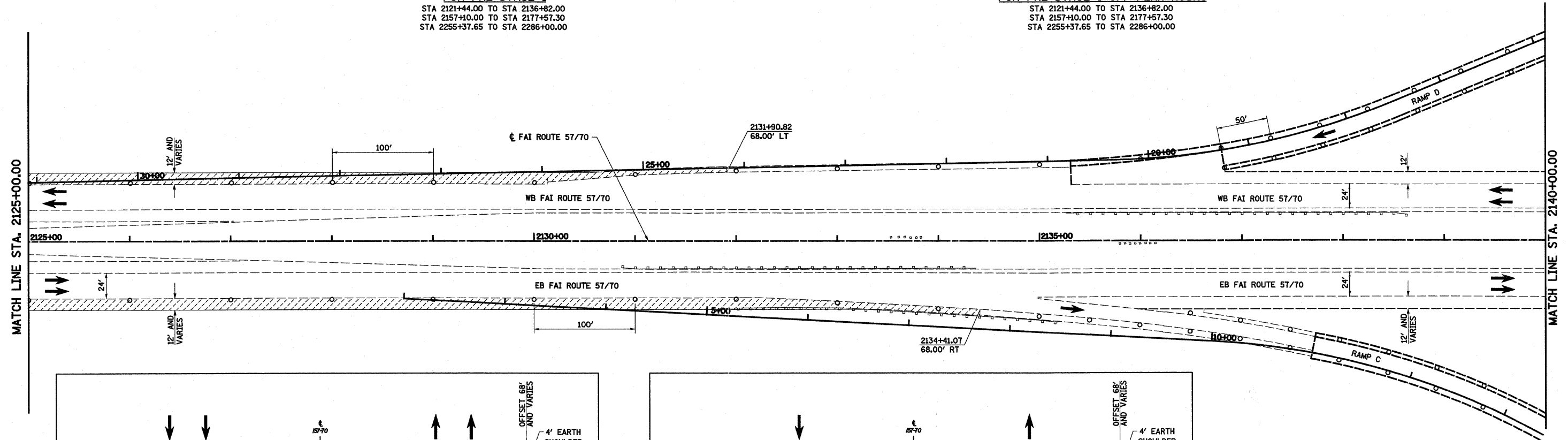
**TYPICAL TRAFFIC PATTERN FOR PRE-STAGE 1**

STA 2121+44.00 TO STA 2136+82.00  
 STA 2157+10.00 TO STA 2177+57.30  
 STA 2255+37.65 TO STA 2286+00.00



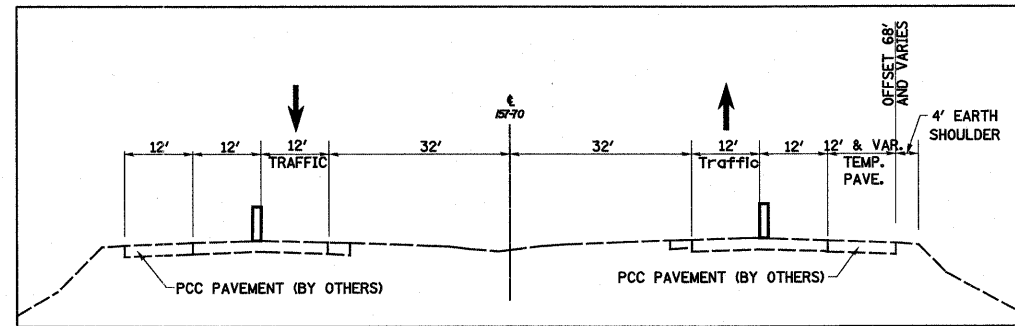
**TYPICAL TRAFFIC PATTERN FOR PRE-STAGE 1 OFF-PEAK HOURS**

STA 2121+44.00 TO STA 2136+82.00  
 STA 2157+10.00 TO STA 2177+57.30  
 STA 2255+37.65 TO STA 2286+00.00



**TYPICAL TRAFFIC PATTERN FOR PRE-STAGE 1**

STA 2136+82.00 TO STA 2157+10.00



**TYPICAL TRAFFIC PATTERN FOR PRE-STAGE 1 OFF-PEAK HOURS**

STA 2136+82.00 TO STA 2157+10.00

- LEGEND**
- TEMPORARY PCC PAVEMENT
  - SIGN
  - DIRECTION OF TRAFFIC
  - TYPE II BARRICADES OR DRUMS WITH MONO-DIRECTIONAL STEADY BURNING LIGHTS
  - VERTICAL PANEL
  - TYPE III BARRICADE WITH FLASHING LIGHTS

**NOTES: PRE-STAGE 1**

1. MAINTAIN TRAFFIC ON EXISTING PAVEMENT. ONE LANE OF TRAFFIC IN EACH DIRECTION MAY BE CLOSED FOR WIDENING OPERATIONS DURING OFF-PEAK HOURS ONLY. ALL TRAFFIC CONTROL DEVICES SHALL BE PULLED BACK TO THE SHOULDER AREA AT ALL OTHER TIMES.
2. INSTALL APPROPRIATE TRAFFIC CONTROL AND PROTECTION AS DIRECTED BY THE ENGINEER.
3. CONSTRUCT WIDENING WITH TEMPORARY PAVEMENT AS INDICATED.
4. REMOVE AND REINSTALL EXISTING GUARDRAIL WHERE INDICATED.
5. PRE-STAGE 1 TRAFFIC CONTROL SHOWN ON THE PLANS DEPICT PLACEMENT OF DEVICES DURING PEAK HOURS.



FILE NAME =	USER NAME = John	DESIGNED - ESW	REVISED -	<b>STATE OF ILLINOIS DEPARTMENT OF TRANSPORTATION</b>	<b>MAINTENANCE OF TRAFFIC, PRE-STAGE 1, FAI ROUTE 57/70</b>			F.A. RTE.	SECTION	COUNTY	TOTAL SHEETS	SHEET NO.
S:\Projects\403-00072-57-70\dm\Keller\mvt_P5.dgn	PLOT SCALE = 100.0000' / IN.	DRAWN - PDB	REVISED -					57/70	(25-3,4)R	EFFINGHAM	1098	92
PLOT DATE = 3/28/2011	DATE - 4-28-08	CHECKED - BRM	REVISED -		SCALE: 1"=50'			SHEET NO. 2 OF 10 SHEETS		STA. 2140+00.00 TO STA. 2155+00.00		
		DATE - 4-28-08	REVISED -					CONTRACT NO. 74299		FED. ROAD DIST. NO. ILLINOIS FED. AID PROJECT		