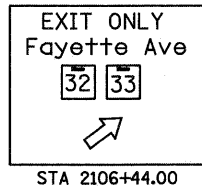
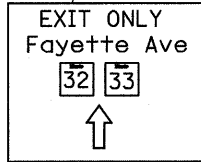


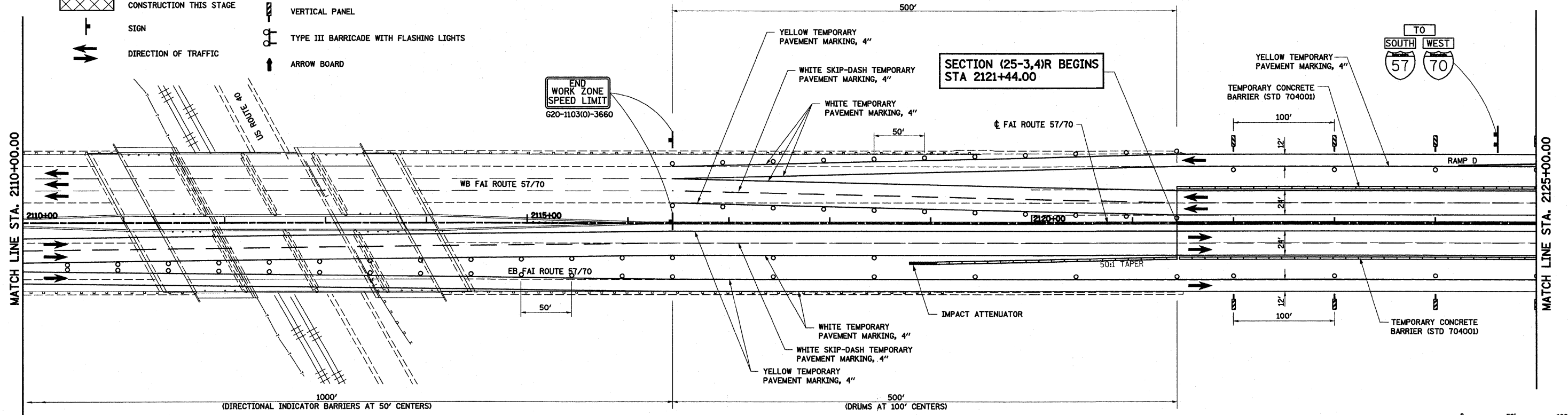
**NOTES: PRE-STAGE 2A**

1. SHIFT ALL TRAFFIC EXITING AT FAYETTE AVE OR IL 32 & IL 33 TO FAR RIGHT LANE. SHIFT REMAINING THROUGH FAI 57/70 TRAFFIC TO NEWLY CONSTRUCTED INSIDE SHOULDER AND PAVEMENT.
2. CONSTRUCT PAVEMENT AND TEMPORARY PAVEMENT AT EACH RAMP TERMINAL AS INDICATED.



**LEGEND**

- TEMPORARY PCC PAVEMENT
- CONSTRUCTION THIS STAGE
- SIGN
- DIRECTION OF TRAFFIC
- TYPE II BARRICADES OR DRUMS WITH MONO-DIRECTIONAL STEADY BURNING LIGHTS
- VERTICAL PANEL
- TYPE III BARRICADE WITH FLASHING LIGHTS
- ARROW BOARD



FILE NAME =	USER NAME = paul	DESIGNED - ESW	REVISED - 4-27-11	<b>STATE OF ILLINOIS DEPARTMENT OF TRANSPORTATION</b>	<b>MAINTENANCE OF TRAFFIC, PRE-STAGE 2A, FAI ROUTE 57/70</b>	F.A.I. RTE.	SECTION	COUNTY	TOTAL SHEETS	SHEET NO.	
SAVProject\403-00072-57-70\dgn\ML_Keller\Misc Revs	429-201\m01_P52a.dgn	DRAWN - PDB	REVISED -			57/70	(25-3,4)R	EFFINGHAM	1098	111	
	PLOT SCALE = 100.0000' / IN.	CHECKED - BRM	REVISED -			CONTRACT NO. 74299					
	PLOT DATE = 4/28/2011	DATE - 5-07-08	REVISED -			FED. ROAD DIST. NO. ILLINOIS FED. AID PROJECT					